

iArmor[®]

iArmor[®] by APS

PART#: IA-S134H

BEFORE INSTALLATION

REMOVE CONTENTS FROM BOX. VERIFY ALL PARTS ARE PRESENT. READ INSTRUCTIONS CAREFULLY BEFORE STARTING INSTALLATION. ASSISTANCE IS RECOMMENDED. THANK YOU FOR CHOOSING OUR PRODUCT!

***ROCKER PANEL MOUNT**

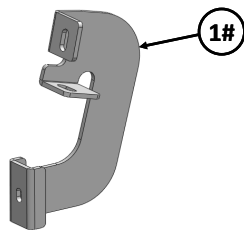
***NO DRILLING / TRIMMING REQUIRED**

Torque Value

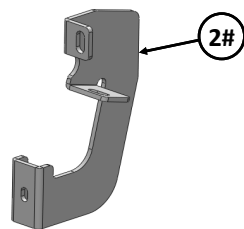
Fastener Size	Tightening Torque (ft-lbs)	Required
6mm	6-7	X
8mm	16-18	√
10mm	31-32	X
12mm	56-58	X
14mm	92-94	X

PART LIST

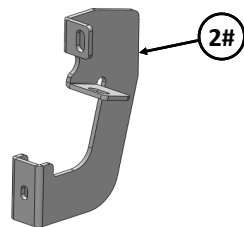
Driver Side Step Bar



1#



2#

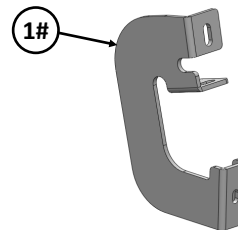


2#

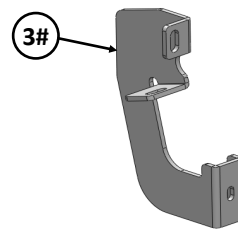
Front



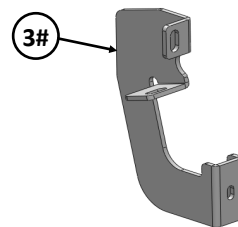
Passenger Side Step Bar



1#



3#



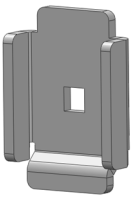
3#

Customer Support: info@iarmorauto.com

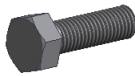
iArmor®

Hardware Package A (For Bracket Installation)

Item	QTY	Description	Item	QTY	Description
1#	2	Driver/Passenger Front Mounting Brackets	6#	18	M8 Large Flat Washers
2#	2	Driver Center/Rear Mounting Brackets	7#	12	M8 Lock Washers
3#	2	Passenger Center/Rear Mounting Brackets	8#	6	M8X1.25 Hex Nuts
4#	6	U Brackets	9#	6	ST8X25mm Hex Self Tapping Screws
5#	12	M8X1.25-25mm Hex Bolts			



4 #



5 #



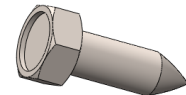
6 #



7 #



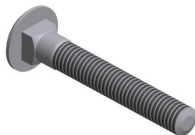
8 #



9 #

Hardware Package B (For Step Bar Installation)

Item	QTY	Description	Item	QTY	Description
1#	6	M8X1.25-55mm Carriage Bolts	3#	6	M8 Lock Washers
2#	6	M8 Large Flat Washers	4#	6	M8 Hex Nuts



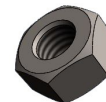
1 #



2#



3 #



4 #

iArmor®

The instruction here is for your reference only. We strongly recommend the professional installer for best result. We are not responsible for any damage caused by the installation.

STEP 1

Start the installation from Passenger Side of the vehicle. Identify the mounting locations along the inner side of the rocker panel (**Fig 1**). If equipped, remove the tapes covering the mounting holes.

STEP 2

Attach passenger side mounting brackets to underside of rocker panel as shown on **Fig 1**. Leave loose.

STEP 3

Once all (3) passenger side mounting brackets are installed, select and attach the Passenger Side Step Bar onto the Mounting Brackets with (3) U Brackets, (3) M8X1.25-55mm Carriage Bolts, (3) M8 Large Flat Washers, (3) M8 Lock Washers and (3) M8X1.25 Hex Nuts (**Fig 2**). Do not fully tighten hardware at this time.

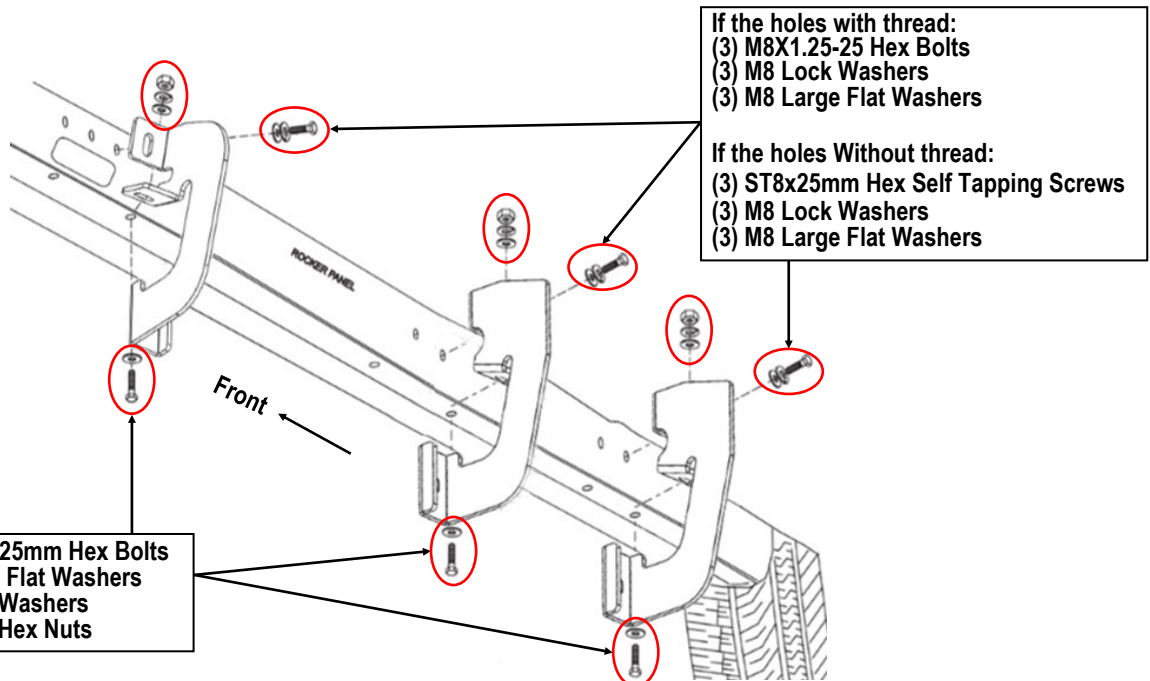
STEP 4

Properly level and adjust the Step Bar and fully tighten all hardware.

STEP 5

Move to the driver side of the vehicle. Repeat **Steps 1-4** to install driver side step bar.

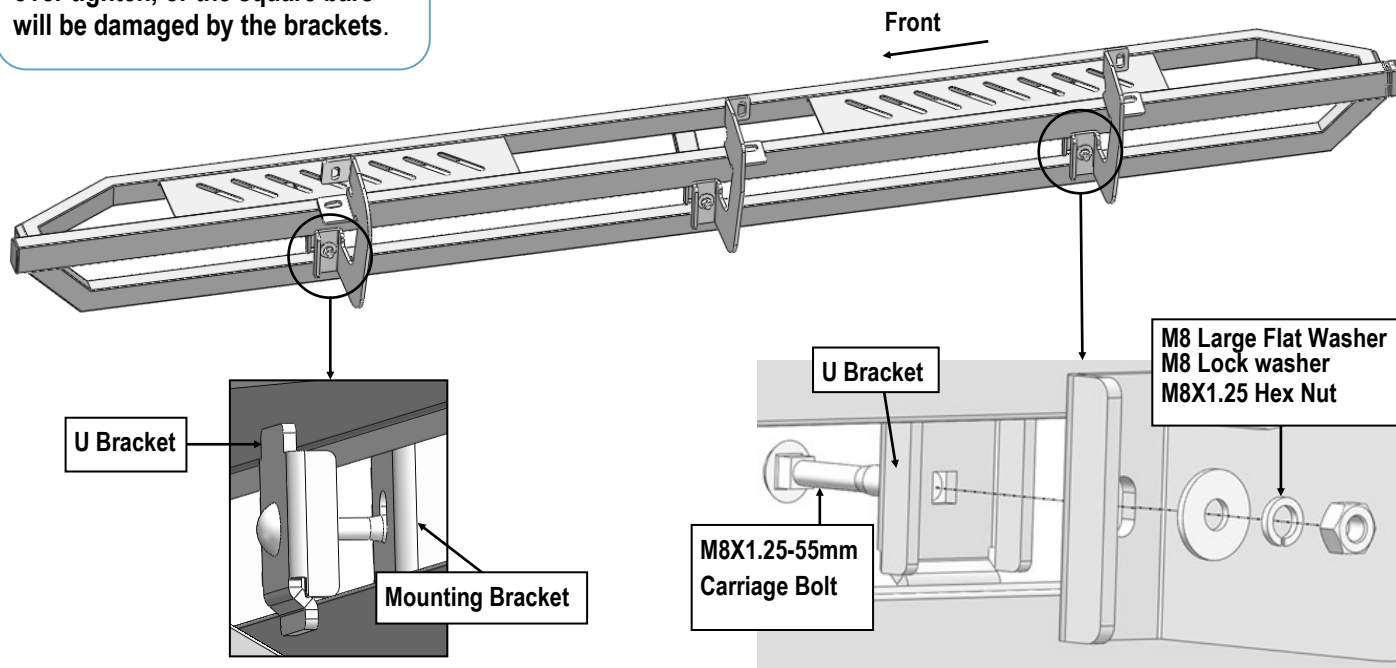
Installation completed.



(Fig 1) Passenger Side Mounting Brackets Installation

iArmor®

NOTE: Torque all M8 X1.25-55mm Carriage Bolts to 16~18 lb-ft. Don't over tighten, or the square bars will be damaged by the brackets.



(Fig 2) Passenger Side Step Bar Installation

Attention

Do periodic inspections to the installation to make sure that all hardware is secure and tight.
In order to protect your bars/boards, please use mild soap/non-abrasive products for cleaning only.