

IARMOR EDGE™

PART#: IA-N239

BEFORE INSTALLATION

REMOVE CONTENTS FROM BOX. VERIFY ALL PARTS ARE PRESENT. READ INSTRUCTIONS CAREFULLY BEFORE STARTING INSTALLATION. ASSISTANCE IS RECOMMENDED. THANK YOU FOR CHOOSING OUR PRODUCT!

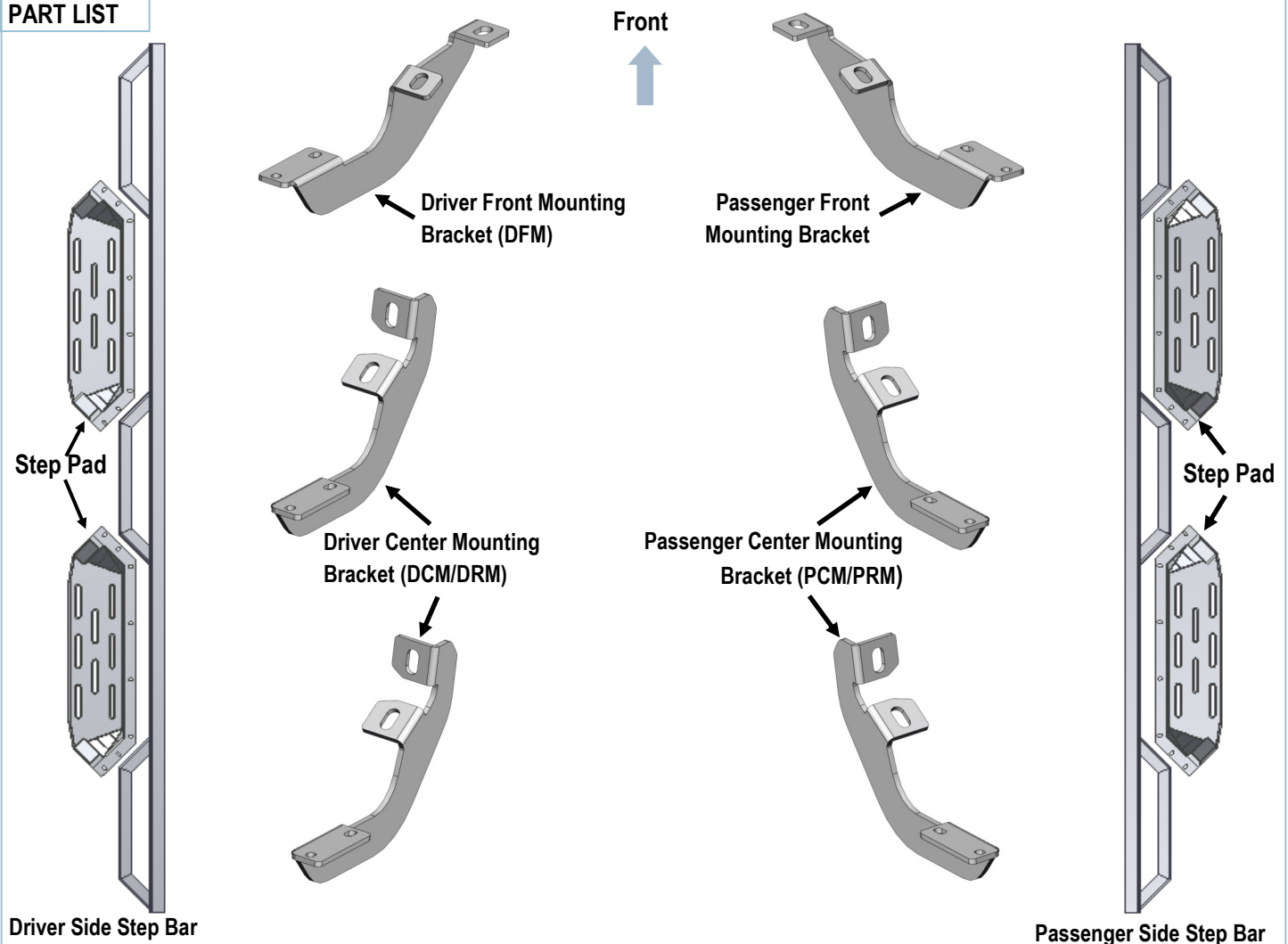
*DRILLING NOT REQUIRED

*TRIMMING NOT REQUIRED

Torque Value

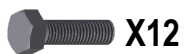
Fastener Size	Tightening Torque (ft-lbs)	Required
6mm	6-7	√
8mm	16-18	X
10mm	31-32	√
12mm	56-58	X
14mm	92-94	X

PART LIST



Customer Support: info@iarmorauto.com

iArmor®



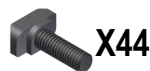
M10X1.5-25
Hex Bolt



M10 Flat Washer



M10 Lock Washer



M6X1-20 T
- Bolt



M6 Large
Flat Washer



M6X1 Nylon
Lock Nut

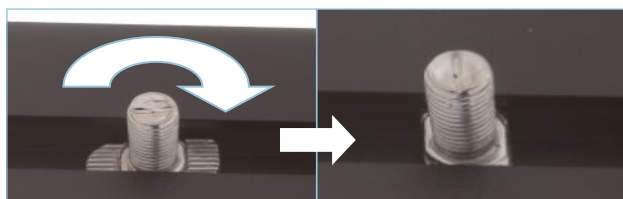
The instruction here is for your reference only. We strongly recommend the professional installer for best result. We are not responsible for any damage caused by the installation.

STEP 1

Install the Step Pads onto the step bars with (32) M6X1-20 T-Bolts, (32) M6 Large Flat Washers and (32) M6X1 Nylon Lock Nuts.

IMPORTANT: Don't hit the step pad by any metal hammer with-in step pad installation, or the step pad will be damaged.

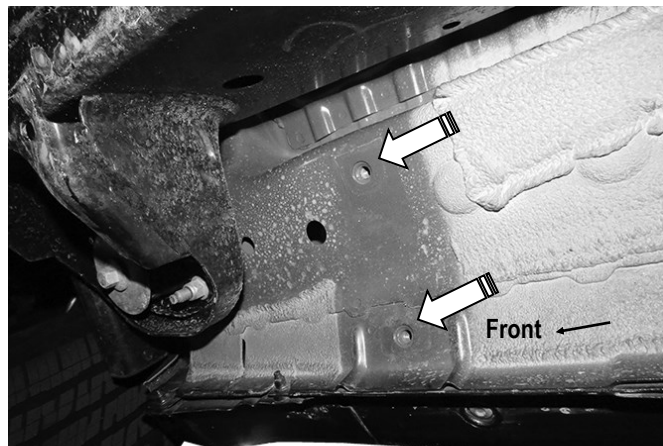
(8) M6X1-20 T-Bolts
(8) M6 Flat Washers
(8) M6X1 Nylon Lock Nuts



Note: Rotate 90° after inserting the T-Bolts into the Channel!!!

STEP 2

Start the installation under the passenger side of the vehicle. Locate the passenger side front mounting location along the inner side of the body, (Fig 1)

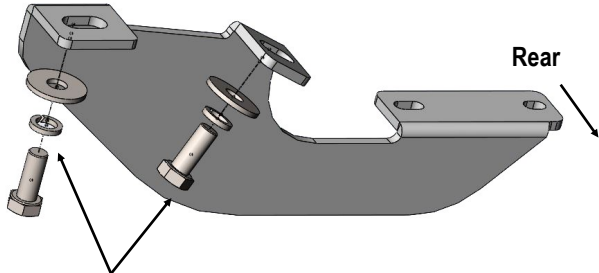


(Fig 1) Passenger Side Front Mounting Location

STEP 3

Remove the plastic plugs covering the mounting holes. Attach the Passenger Front Mounting Bracket (PFM) to passenger side front mounting location with (2) M10x1.5-25 Hex Bolts, (2) M10 Lock Washers and (2) M10 Flat Washers, (Fig 2 & 3). Do not fully tighten hardware at this time.

iArmor®



(2) M10X1.5-25 Hex Bolts
(2) M10 Lock Washers
(2) M10 Flat Washers

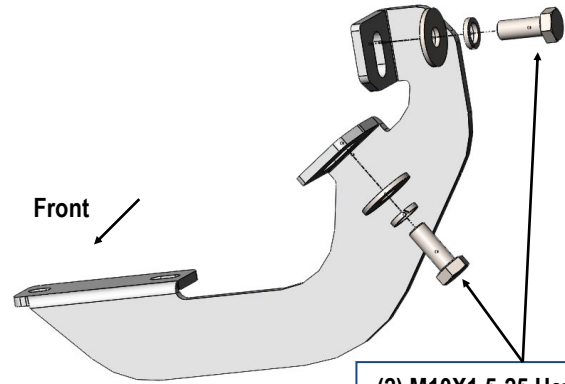
(Fig 2) Passenger Front Mounting Bracket (PFM) Installed



(Fig 3) Passenger Front Mounting Bracket (PFM) Installed

STEP 4

Locate the passenger side center threaded mounting holes. Select and attach (1) Passenger Center Mounting Bracket (PCM/PRM) with (2) M10x1.5-25 Hex Bolts, (2) M10 Lock Washers and (2) M10 Flat Washers, (Fig 4). Do not fully tighten hardware at this time.



(2) M10X1.5-25 Hex Bolts
(2) M10 Lock Washers
(2) M10 Flat Washers

(Fig 4) Passenger Center Mounting Bracket (PCM/PRM) Installed

STEP 5

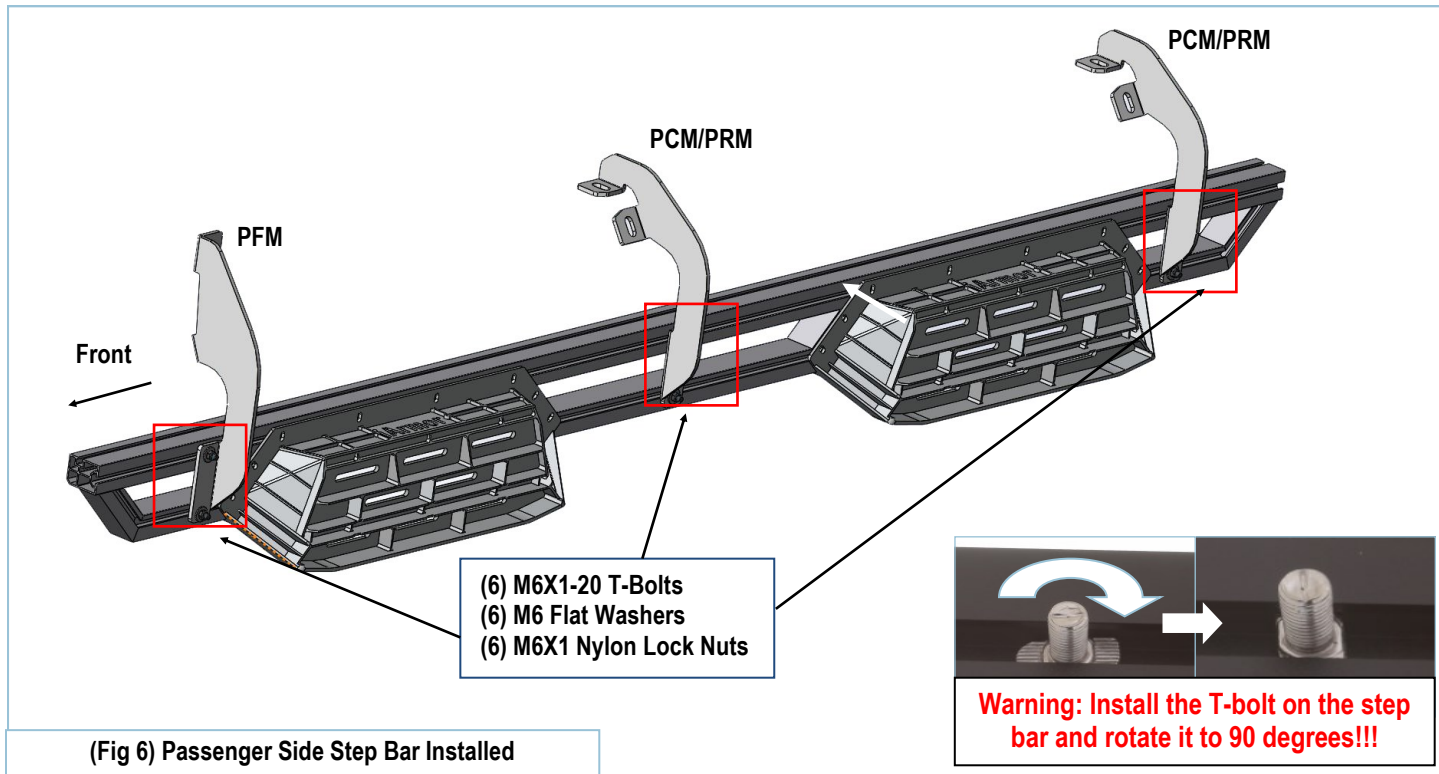
Repeat **Step 4** to install Passenger Rear Mounting Bracket (PRM). Do not fully tighten hardware at this time.

Note: Passenger Center & Rear Mounting Bracket are universal.

STEP 6

Once all (3) Mounting Brackets have been installed, attach the Assembled Passenger Side Step Bar to the Mounting Brackets using (6) M6X1-20 T-Bolts, (6) M6 Large Flat Washers and (6) M6X1 Nylon Lock Nuts (Fig 6). Do not fully tighten hardware at this time.

iArmor®



STEP 7

Move to the driver side of the vehicle. Repeat **Steps 2-6** to install driver side step bar. Properly level and adjust the Step Bar and fully tighten all hardware.

Attention

Do periodic inspections to the installation to make sure that all hardware is secure and tight.

In order to protect your bars/boards, please use only mild soap/non-abrasive products for cleaning.