

IARMOR EDGE™

PART#: IA-N188

BEFORE INSTALLATION

REMOVE CONTENTS FROM BOX. VERIFY ALL PARTS ARE PRESENT. READ INSTRUCTIONS CAREFULLY BEFORE STARTING INSTALLATION. ASSISTANCE IS RECOMMENDED. THANK YOU FOR CHOOSING OUR PRODUCT!

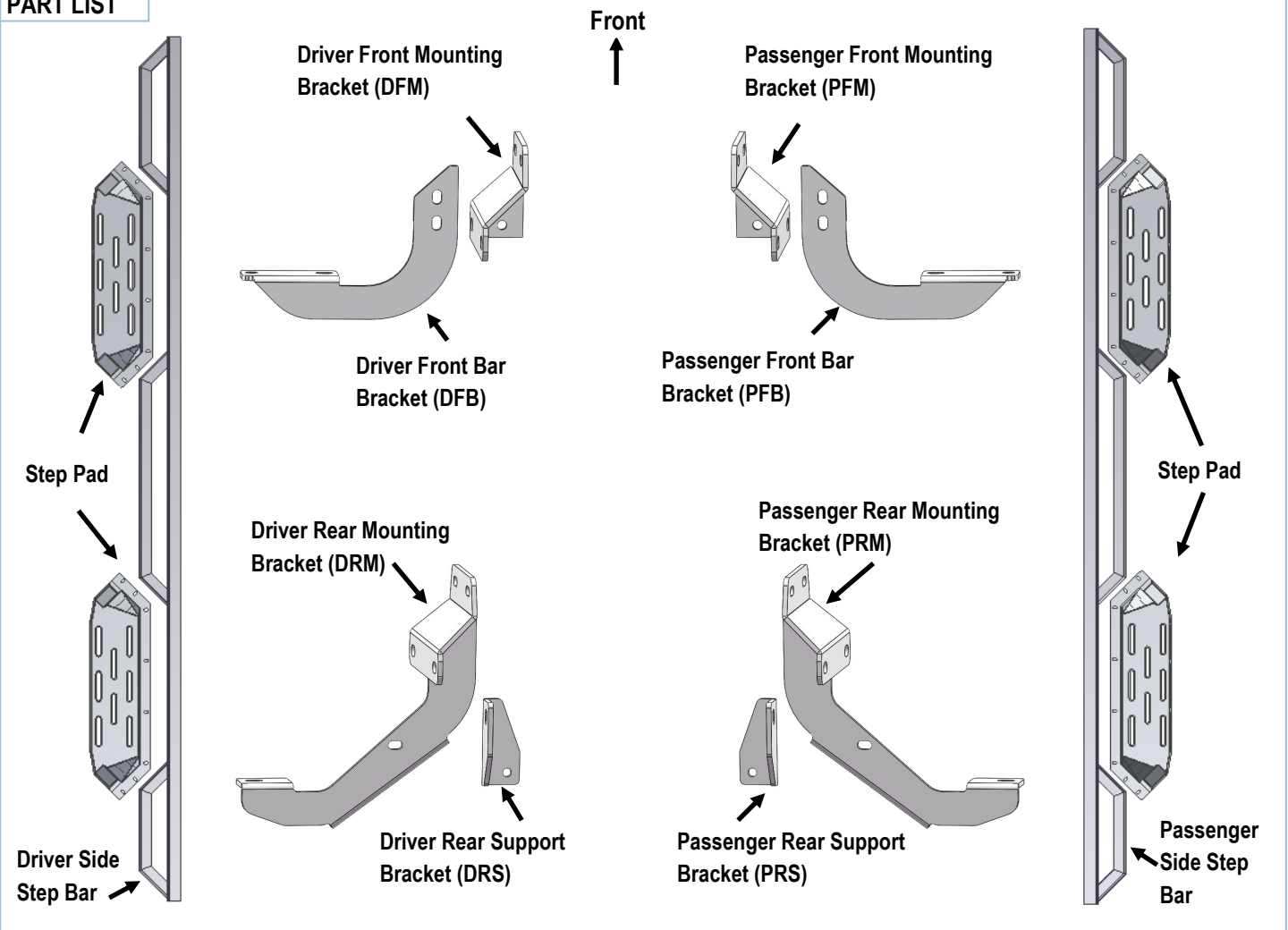
*DRILLING NOT REQUIRED

*TRIMMING NOT REQUIRED

Torque Value

Fastener Size	Tightening Torque (ft-lbs)
6mm	6-7
8mm	16-18
10mm	31-32
12mm	56-58
14mm	92-94

PART LIST



Customer Support: info@iarmorauto.com

iArmor®



X12

M8 Plastic Washer



X2

M8X1.25-30
Hex Bolt



X20

M8 Flat Washer



X18

M8X1.25 Nylon
Lock Nut



X4

M8X1.25-20 Inner Hex Bolt



X4

M6X1-20 Square
Head Bolt



X40

M6X1 Nylon
Lock Nut



X40

M6 Large Flat
Washer



X36

M6X1-20 T-Bolt



X8

M6X1-20 Flat
Sunk Head Bolt

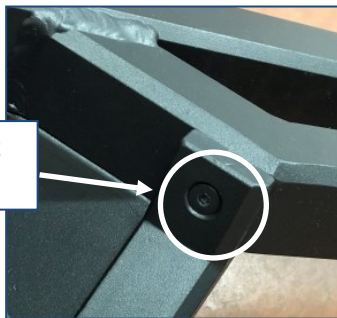
The instruction here is for your reference only. We strongly recommend the professional installer for best result. We are not responsible for any damage caused by the installation.

STEP 1

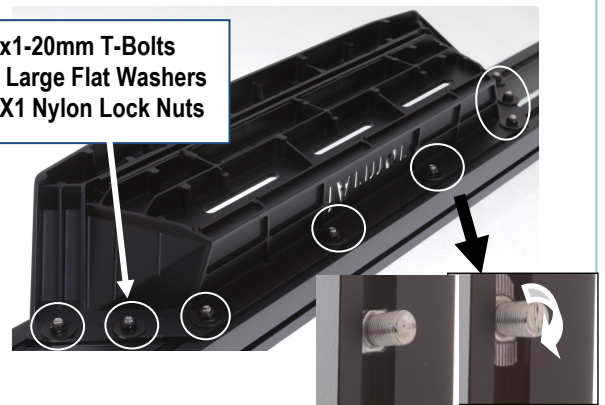
Install the Step Pads onto the step bars with (32) M6x1-20mm T-Bolts, (32) M6 Large Flat Washers, (32) M6X1Nylon Lock Nuts and (8) M6X1-20mm Flat Sunk Head Bolts.

IMPORTANT: Don't hit the step pad by any metal hammer within step pad installation, or the step pad will be damaged.

(2) M6x1-20mm Flat
Sunk Head bolts

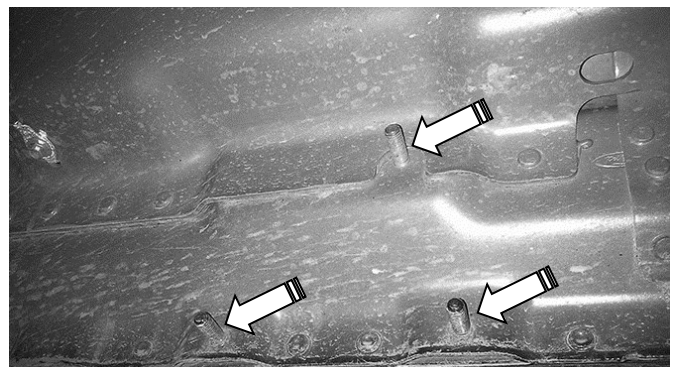


(8) M6x1-20mm T-Bolts
(8) M6 Large Flat Washers
(8) M6X1 Nylon Lock Nuts



STEP 2

Start the installation under the driver/left side of the vehicle. Locate the front factory running board mounting location along the inner side of the body, (Fig 1).



(Fig 1) Driver Side Mounting Location Pictured

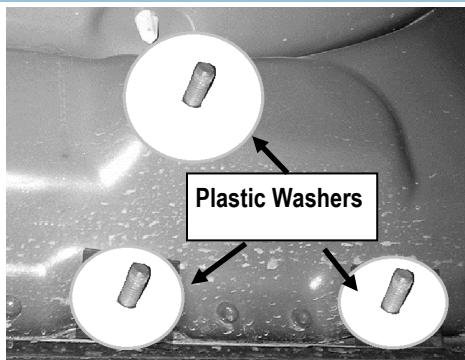
Customer Support: info@iarmorauto.com

iArmor®

STEP 3

Slide (1) Plastic Washer over each of the (3) factory mounting studs in the body panel, (Fig 2).

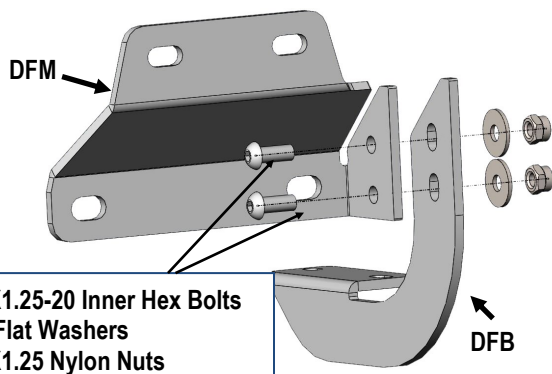
IMPORTANT: The Plastic Washers are designed to prevent corrosion between the rocker panel and the steel mounting brackets.



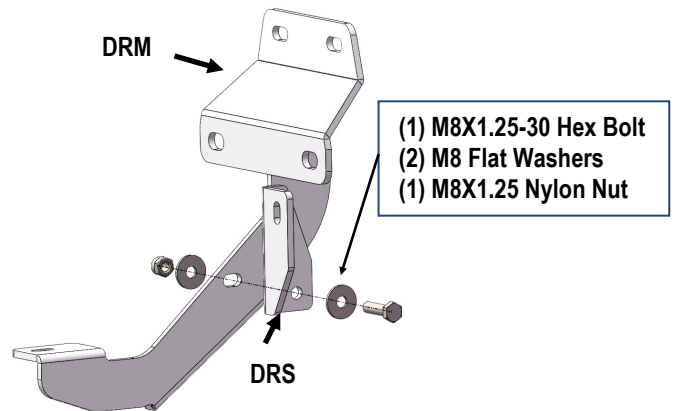
(Fig 2) Thread Plastic Washers Onto All Mounting Studs

STEP 4

Assemble Driver Side Front Brackets and Driver Side Rear Brackets (Fig 4 & 5). Do not fully tighten hardware at this time.



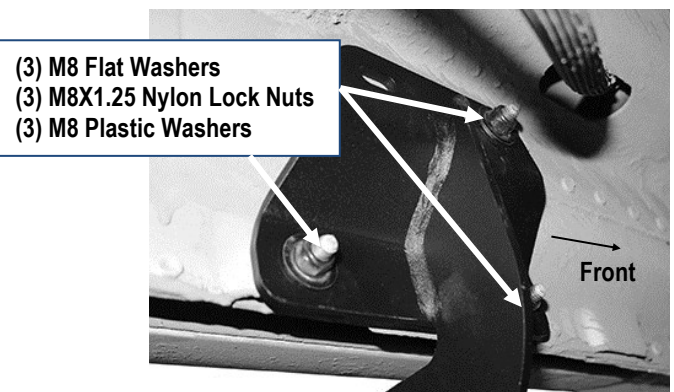
(Fig4) Driver Side Front Brackets Assembly



(Fig 5) Driver Side Rear Brackets Assembly

STEP 5

Attach the Assembled Driver Front Mounting Bracket to the (3) factory studs with (3) M8 Flat Washers and (3) M8X1.25 Nylon Lock Nuts, (Fig 6). Leave brackets loose at this time.



(Fig 6) Driver Front Mounting Bracket Installed

STEP 6

Repeat **Step 5** to install the remaining Assembled Driver Rear Brackets.

iArmor®

STEP 7

Once (2) driver side mounting brackets are installed, attach the Assembled Driver Side Step Bar onto the Mounting Brackets with (2) M6X1-20 Square Head Bolts, (2) M6X1-20 T- Bolts, (4) M6 Large Flat Washers and (4) M6x1 Nylon Lock Nuts, (**Fig 7**). Do not fully tighten hardware at this time.

STEP 8

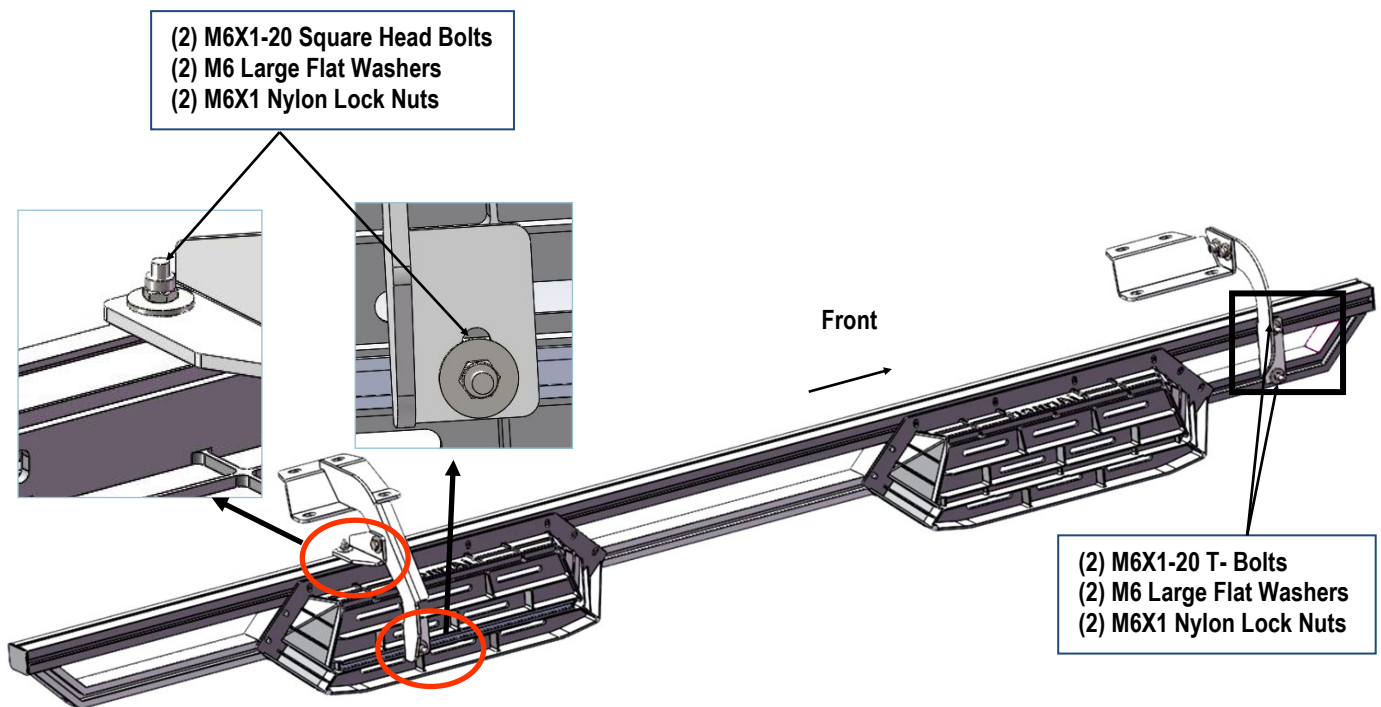
Properly level and adjust the Step Bar and fully tighten all hardware.

Move to the Passenger side of the vehicle. Repeat **Steps 1-7** to install Passenger side step bar.

Attention

Do periodic inspections to the installation to make sure that all hardware is secure and tight.

In order to protect your bars/boards, please use only mild soap/non-abrasive products for cleaning.



(Fig 7) Driver Side Step Bar Installed