

IARMOR EDGE™

PART#: IA-N177

BEFORE INSTALLATION

REMOVE CONTENTS FROM BOX. VERIFY ALL PARTS ARE PRESENT. READ INSTRUCTIONS CAREFULLY BEFORE STARTING INSTALLATION. ASSISTANCE IS RECOMMENDED. THANK YOU FOR CHOOSING OUR PRODUCT!

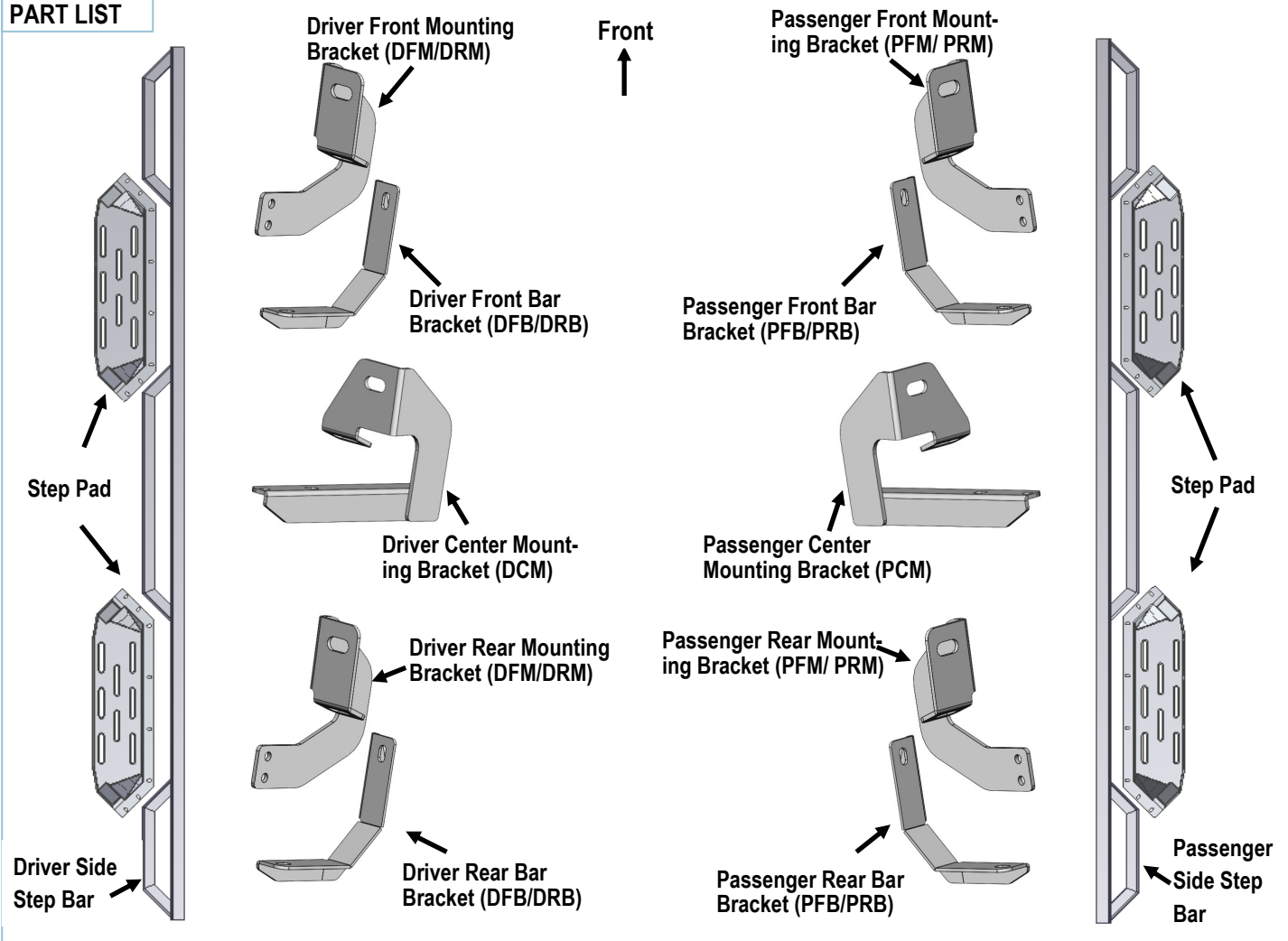
*DRILLING NOT REQUIRED

*TRIMMING NOT REQUIRED

Torque Value

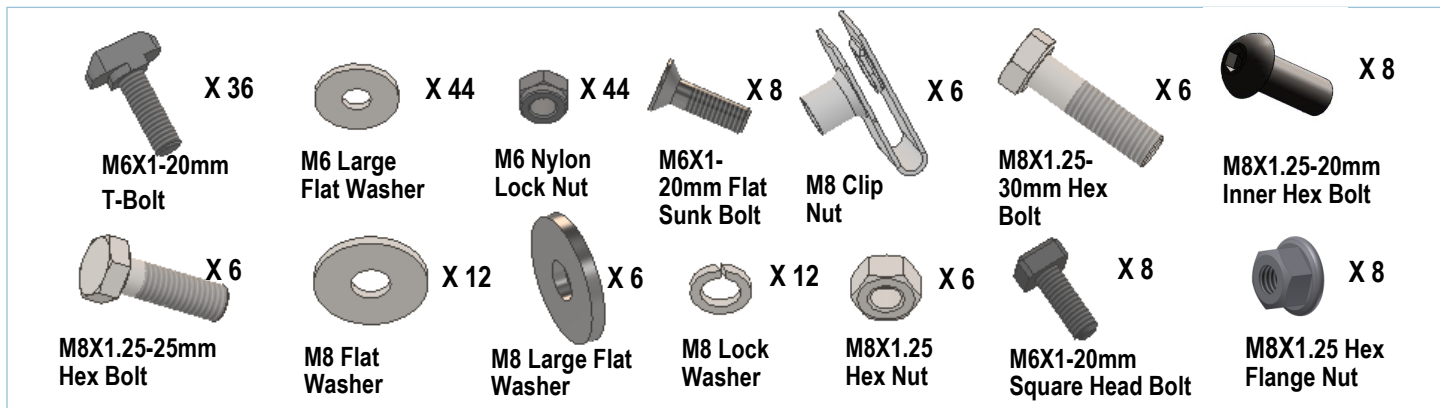
Fastener Size	Tightening Torque (ft-lbs)
6mm	6-7
8mm	16-18
10mm	31-32
12mm	56-58
14mm	92-94

PART LIST



Customer Support: info@iarmorauto.com

iArmor®



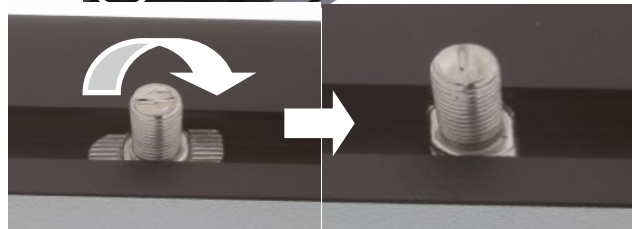
The instruction here is for your reference only. We strongly recommend the professional installer for best result. We are not responsible for any damage caused by the installation.

STEP 1

Install the Step Pads onto the step bars with (32) M6X1-20mm T-Bolts, (32) M6 Large Flat Washers, (32) M6X1 Nylon Lock Nuts and (8) M6X1-20 Flat Sunk Head Bolts.

IMPORTANT: Don't hit the step pad by any metal hummer within step pad installation, or the step pad will be damaged.

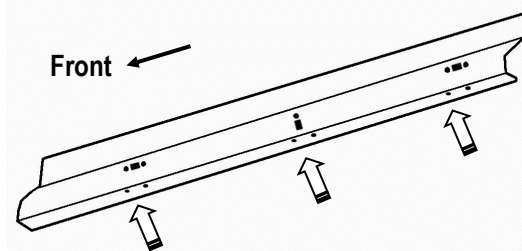
(8) M6X1-20mm T-Bolts
(8) M6 Flat Washers
(8) M6 Nylon Lock Nuts



M6X1-20mm Flat Sunk Head Bolt Location

STEP 2

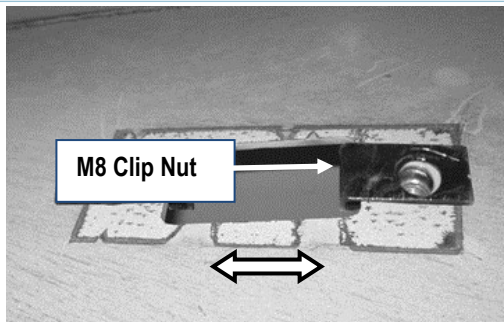
Starting on the passenger side of the vehicle, locate the (2) holes in the bottom of the body panel, (pinch weld), toward the front tire, (**Fig 1**). Next locate the rectangular opening and (2) small holes in the inner body panel directly above the holes in the pinch weld, (**Fig 1 & 2**). **NOTE:** The holes in the inner panel may be covered with sealing tape or insulation.



(Fig 1) Passenger Inner Body Panel Illustrated

Customer Support: info@iarmorauto.com

iArmor®



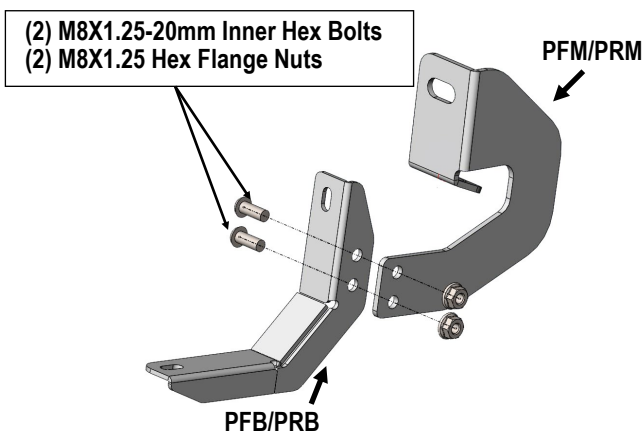
(Fig 2) Slide M8 Clip Nut Over Hole

STEP 3

Slide (1) M8 Clip Nut into the rectangular opening with the nut towards the inside. Line up the threaded nut with the round hole, (Fig 2).

STEP 4

Assemble the Passenger Front Mounting Bracket (PFM/PRM) and Passenger Front Bar Bracket (PFB/PRB) with (2) M8X1.25-20mm Inner Hex Bolts and (2) M8X1.25 Hex Flange Nuts. (Fig 3)

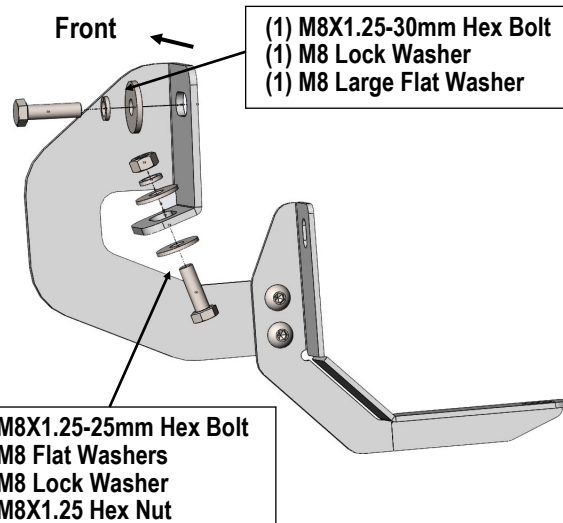


(Fig 3) Passenger Front Mounting Bracket Assembly

STEP 5

Attach the Assembled Passenger Front Bracket to the M8 Clip Nut with (1) M8X1.25-30mm Hex Bolt, (1) M8 Lock Washer and (1) M8 Large Flat Washer, (Fig 4). Align the bottom hole in the front Bracket with the (1) hole in the pinch weld. Attach the Bracket to the pinch weld using the included (1) M8X1.25-25mm Hex Bolt, (2) M8 Flat Washers, (1) M8 Lock Washer and (1) M8X1.25 Hex Nut, (Fig 4).

NOTE: Insert the bolts up from the bottom of the pinch weld and through the Bracket. Do not tighten hardware at this time.

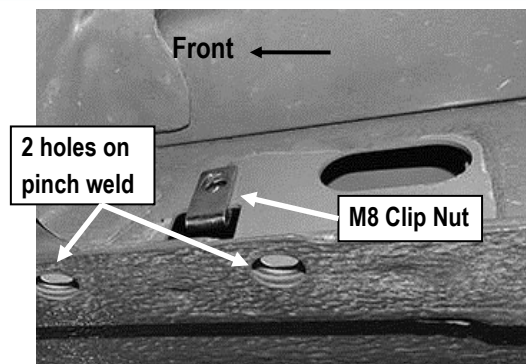


(Fig 4) Passenger Front Mounting Bracket Installed

STEP 6

Next, move to the Passenger Side Center Location of the vehicle. Locate the (2) holes in the pinch weld similar to the front location, Insert (1) M8 Clip Nut into the rectangular opening and line up with the single small round hole in the body panel, (Fig 5).

iArmor®



(Fig 5) Passenger Side Center Mounting Location

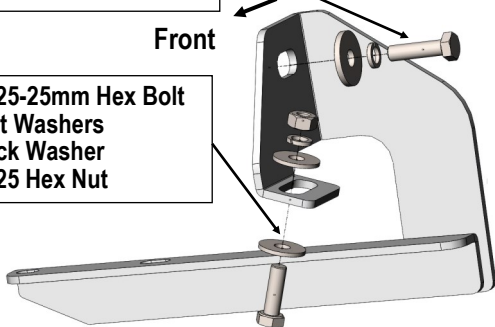
STEP 7

Select the Passenger Center Mounting Bracket (**PCM**). Attach the Bracket to the M8 Clip Nut with (1) M8X1.25-30mm Hex Bolt, (1) M8 Lock Washer and (1) M8 Large Flat Washer, (**Fig 6**). Line up the hole in the Bracket with the hole in the pinch weld. Bolt the Bracket to the pinch weld with (1) M8x1.25-25mm Hex Bolt, (2) M8 Flat Washers, (1) M8 Lock Washer and (1) M8X1.25 Hex Nut. Do not fully tighten hardware at this time. **NOTE:** The cradle on the center mounting Bracket will face the front of the vehicle.

- (1) M8X1.25-30mm Hex Bolt
- (1) M8 Lock Washer
- (1) M8 Large Flat Washer

Front

- (1) M8X1.25-25mm Hex Bolt
- (2) M8 Flat Washers
- (1) M8 Lock Washer
- (1) M8X1.25 Hex Nut



(Fig 6) Passenger Center Mounting Bracket Installed

STEP 8

Continue moving to the Passenger Side Rear Mounting location and locate the last (2) mounting holes in the pinch weld at the back of the cab, (**Fig 1**). Repeat **Steps 3-5** for Passenger Rear Mounting Bracket (**PRM**) installation .

STEP 9

Once all (3) Brackets have been fully installed, attach the Assembled Passenger Side Step Bar onto the brackets with (2) M6X1-20mm T-Bolts, (4)M6X1-20mm Square Head Bolts,(6) M6 Large Flat Washers and (6)M6X1 Nylon Lock Nuts, (**Fig 7**). Do not fully tighten hardware at this time.

STEP 10

Level and adjust the Assembled Step Bar and tighten all hardware.

STEP 11

Repeat **Steps 2-10** for driver side Step Bar installation.

STEP 12

Do periodic inspections to the installation to make sure that all hardware is secure and tight.

iArmor®

Attention

Do periodic inspections to the installation to make sure that all hardware is secure and tight.
In order to protect your bars/boards, please use only mild soap/non-abrasive products for cleaning.

(Fig 7) Passenger Side Step Installation

