

iArmor[®]

iArmor[®] by APS

PART#: IA-S912

BEFORE INSTALLATION

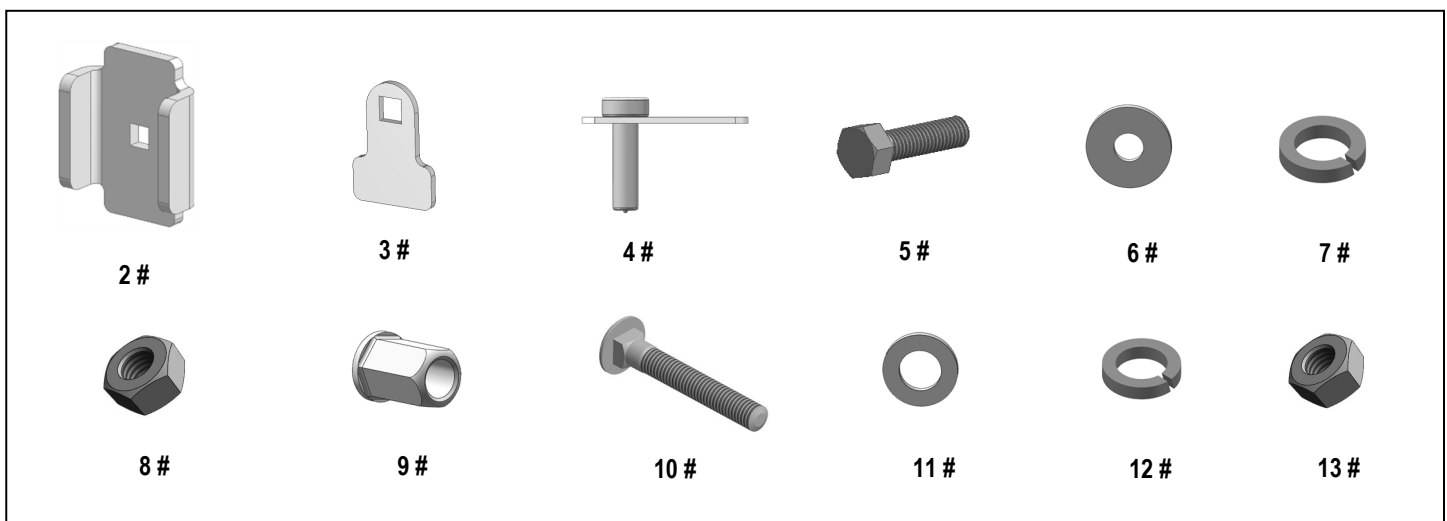
REMOVE CONTENTS FROM BOX. VERIFY ALL PARTS ARE PRESENT. READ INSTRUCTIONS CAREFULLY BEFORE STARTING INSTALLATION. ASSISTANCE IS RECOMMENDED. THANK YOU FOR CHOOSING OUR PRODUCT!

*ROCKER PANEL MOUNT

*NO DRILLING /TRIMMING REQUIRED

Fastener Size	Tightening Torque (ft-lbs)	Required
6mm	6-7	X
8mm	16-18	√
10mm	31-32	√
12mm	56-58	X
14mm	92-94	X

Item	QTY	Description	Item	QTY	Description
1#	4	Mounting Brackets	8#	4	M10X1.5 Hex Nuts
2#	4	U Brackets	9#	4	M10X1.5-19.5mm Rivet Nuts
3#	8	Spacers	10#	4	M8X1.25-55mm Carriage Bolts
4#	4	M10X35mm Bolt Plates	11#	4	M8 Large Flat Washers
5#	4	M10X1.5-25mm Hex Bolts	12#	4	M8 Lock Washers
6#	8	M10 Flat Washers	13#	4	M8X1.25 Hex Nuts
7#	8	M10 Lock Washers			



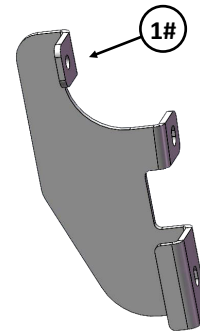
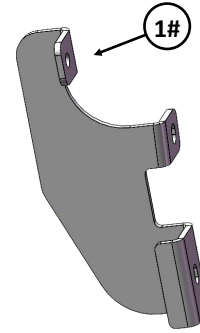
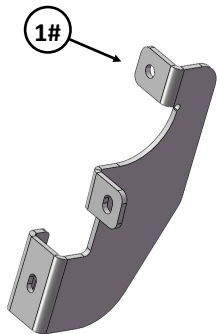
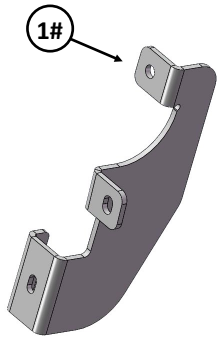
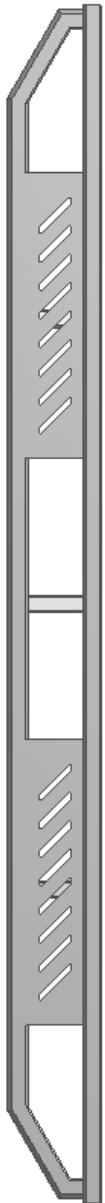
Customer Support: info@iarmorauto.com

iArmor[®]

Driver

Front

Passenger

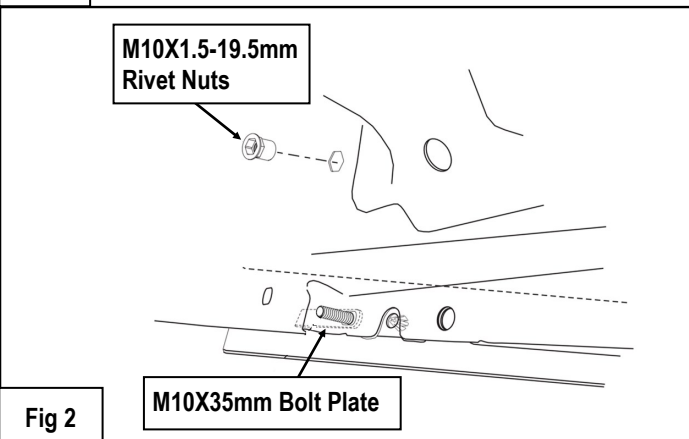
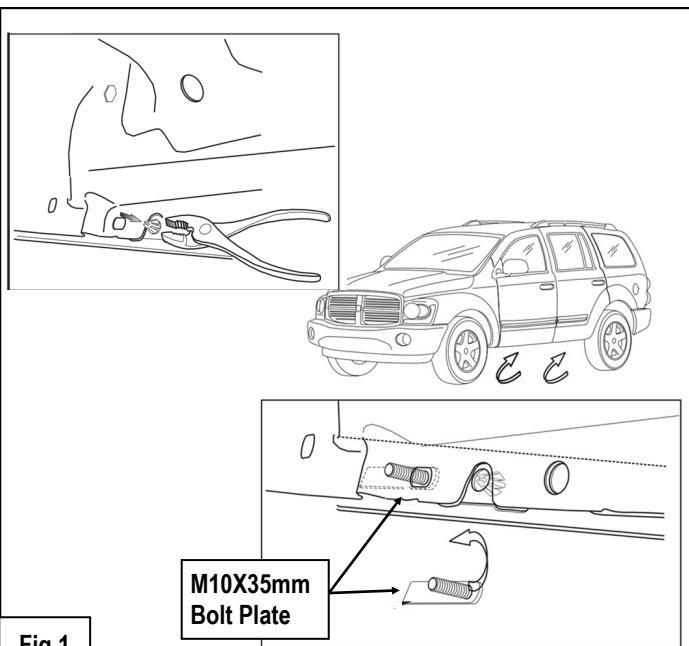


iArmor®

The instruction here is for your reference only. We strongly recommend the professional installer for best result. We are not responsible for any damage caused by the installation.

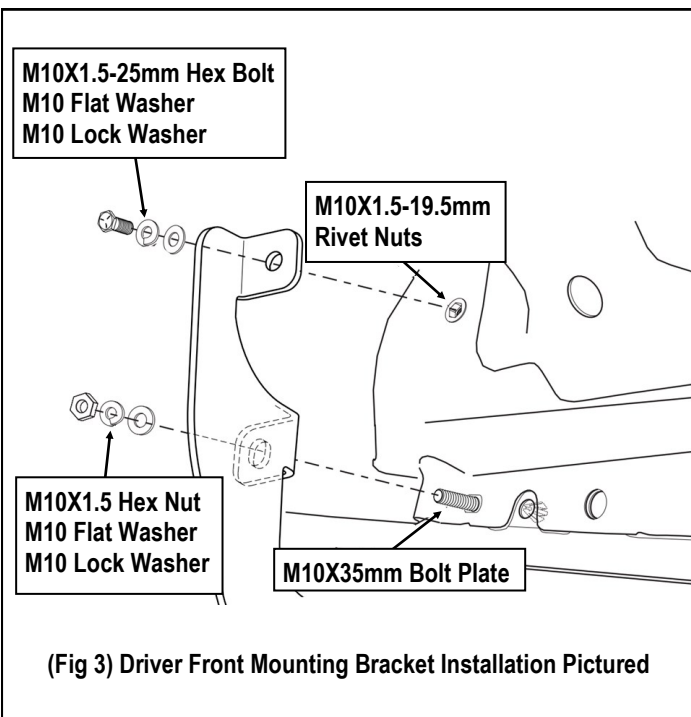
STEP 1

Start from the driver side. Separate trim from rocker panel and insert M10x35mm Bolt Plate as shown, (Figs 1 & 2). Do not fully tighten hardware at this time. Insert M10X1.5-19.5mm Rivet Nuts as shown, (Fig 2).



STEP 2

Attach (1) Mounting Bracket with (1) M10X1.5-25mm Hex Bolt, (2) M10 Flat Washers, (2) M10 Lock Washers and (1) M10X1.5 Hex Nut, (Fig 3). Do not fully tighten hardware at this time.

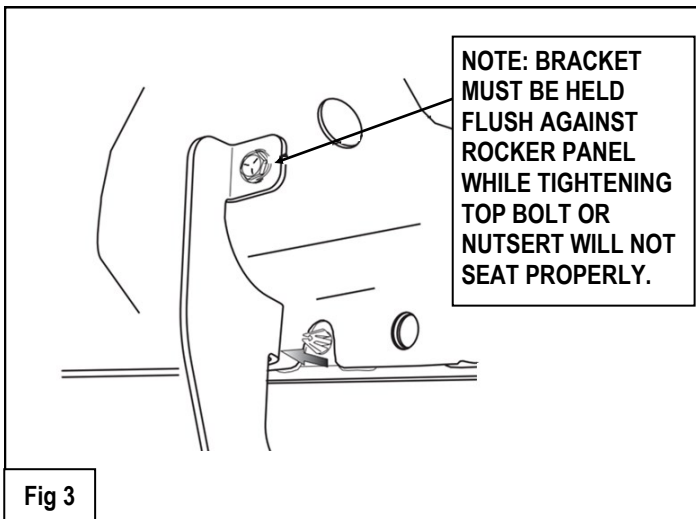


STEP 3

Tighten top bolt to crimp Rivet Nut until increased resistance is felt. Verify M10X1.5-19.5mm Rivet Nut is not loose in hole, otherwise re-tighten. Hole M10x35mm Bolt Plate parallel to rocker panel and tighten bottom nut. Re-attach trim panel as shown, (Fig 4).

Repeat Steps 1-3 for driver side rear bracket installation.

iArmor®



STEP 4

Once all (2) driver side mounting brackets are installed, select and attach the Driver Side Step Bar onto the Mounting Brackets with (2) U Brackets, (4) Spacers, (2) M8X1.25-55mm Carriage Bolts, (2) M8 Large Flat Washers, (2) M8 Lock Washers and (2) M8X1.25 Hex Nuts, (Fig 5). Do not fully tighten hardware at this time.

STEP 5

Properly level and adjust the Step Bar and fully tighten all hardware.

STEP 6

Move to the passenger side of the vehicle. Repeat **Steps 1-5** to install passenger side step bar.

Installation completed.

Attention

Do periodic inspections to the installation to make sure that all hardware is secure and tight.

In order to protect your bars/boards, please use only mild soap/non-abrasive products for cleaning.

