

PART#: IA-N423H

iArmor® Series

BEFORE INSTALLATION

REMOVE CONTENTS FROM BOX. VERIFY ALL PARTS ARE PRESENT. READ INSTRUCTIONS CAREFULLY BEFORE STARTING INSTALLATION. ASSISTANCE IS RECOMMENDED. THANK YOU FOR CHOOSING OUR PRODUCT!

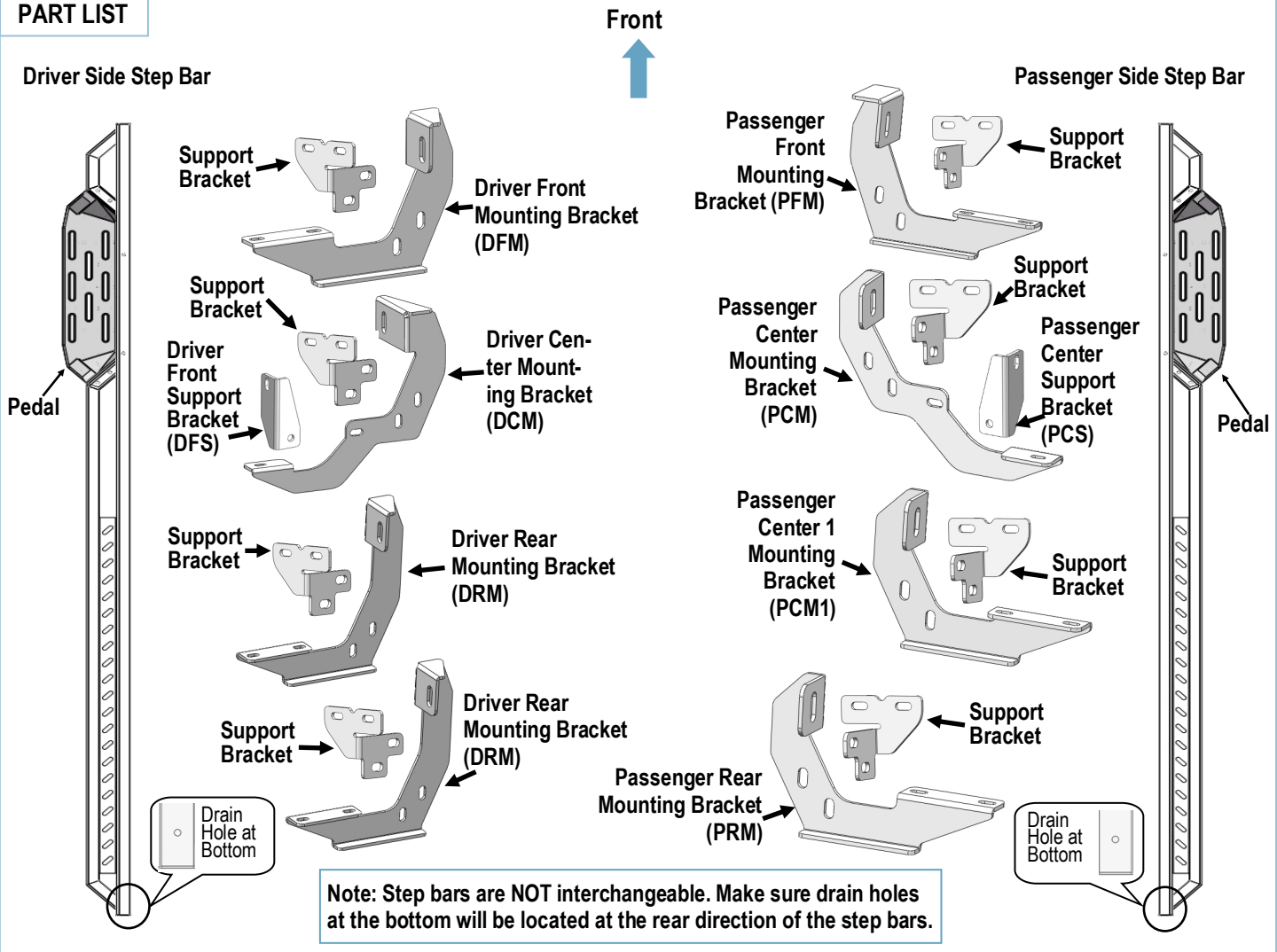
***ROCKER PANEL MOUNT**

***DRILLING IS REQUIRED**

Torque Value

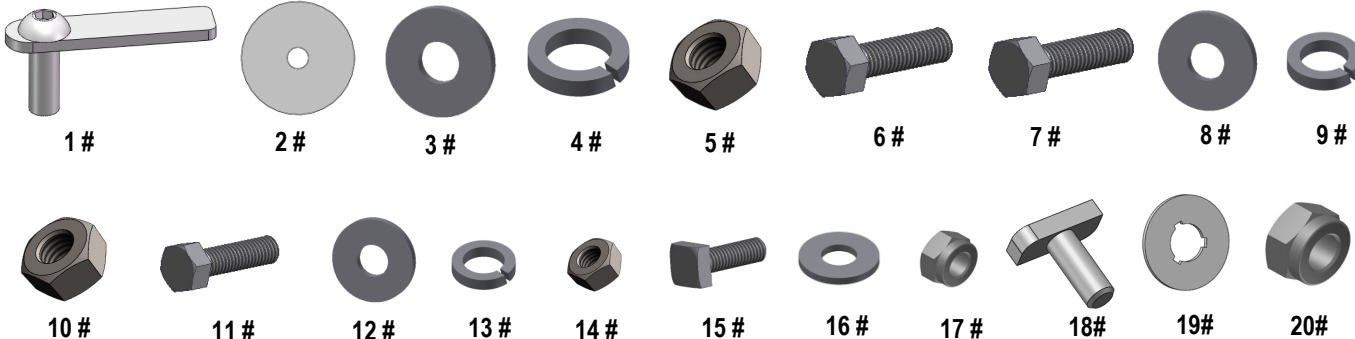
Fastener Size	Tightening Torque (ft-lbs)	Required
6mm	6-7	X
8mm	16-18	√
10mm	31-32	√
12mm	56-58	X
14mm	92-94	X

PART LIST



Customer Support: info@iarmorauto.com


Hardware Package A (For Brackets & Bars Installation)					
Item	QTY	Description	Item	QTY	Description
1#	8	M10 Bolt Plates	11#	16	M6X1-30 Hex Bolts
2#	8	M10 Plastic Washers	12#	32	M6 Flat Washers
3#	8	M10 Flat Washers	13#	16	M6 Lock Washers
4#	8	M10 Lock Washers	14#	16	M6X1 Hex Nuts
5#	8	M10 Hex Nuts	15#	2	M6X1-20 Square Head Bolts
6#	16	M8X1.25-30 Hex Bolts	16#	2	M6 Large Flat Washers
7#	2	M8X1.25-25 Hex Bolts	17#	2	M6X1 Nylon Lock Nuts
8#	50	M8 Flat Washers	18#	14	M8X1.25-20 T Bolts
9#	18	M8 Lock Washers	19#	14	M8 Plastic Washers
10#	18	M8 Hex Nuts	20#	14	M8 Nylon Lock Nuts



1# 2# 3# 4# 5# 6# 7# 8# 9#

10# 11# 12# 13# 14# 15# 16# 17# 18# 19# 20#

Hardware Package B (For Step Pedals Installation)					
Item	QTY	Description	Item	QTY	Description
1#	12	M8X1.25-25 Hex Bolts	3#	12	M8 Lock Washers
2#	12	M8 Large Flat Washers			



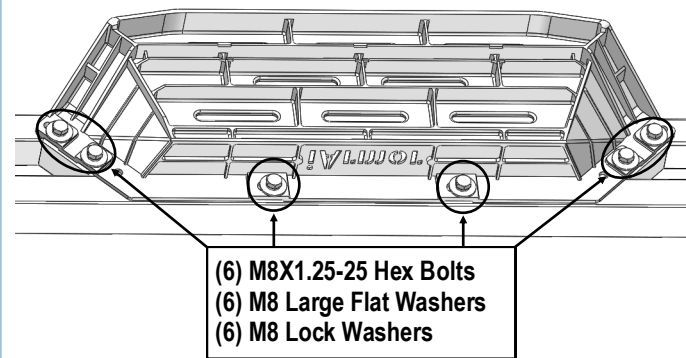
1# 2# 3#

The instruction here is for your reference only. We strongly recommend the professional installer for best result. We are not responsible for any damage caused by the installation.

STEP 1

Install (2) Pedals onto the step bars with (12) M8X1.25-25mm Hex Bolts, (12) M8 Large Flat Washers and (12) M8 Lock Washers.

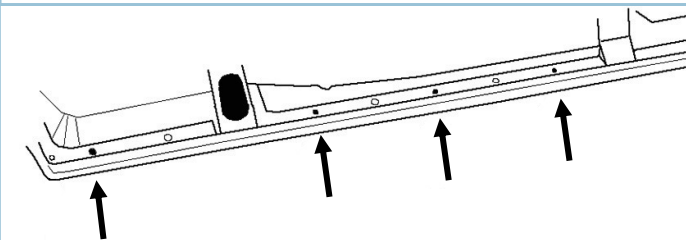
IMPORTANT: Don't punch the pedal with any metal hammer within pedal installation, or the pedal will be damaged.



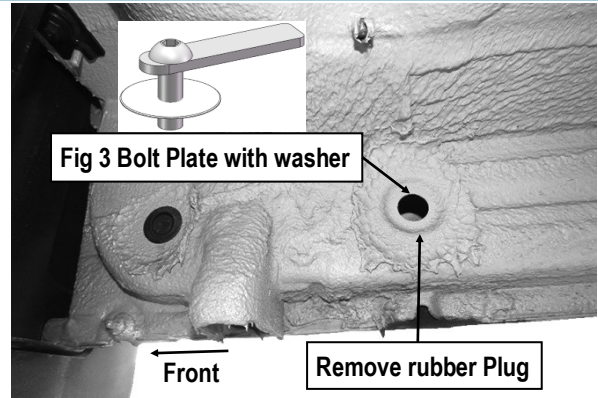
STEP 2

Start installation from the passenger side of the vehicle. Locate the 2nd factory hole in the inner body panel from the front tire opening (**Figs 1-3**). Remove the rubber plug. **NOTE: Mounting locations may be covered with heavy undercoating. Refer to Figure 1 to find all mounting locations.**

Select (1) M10 Bolt Plate. Insert the Bolt Plate into the mounting hole. Thread (1) M10 Plastic Washer onto the Bolt Plate to hold it in place, (**Fig 3**).



(Fig 1) Passenger Side Mounting Locations

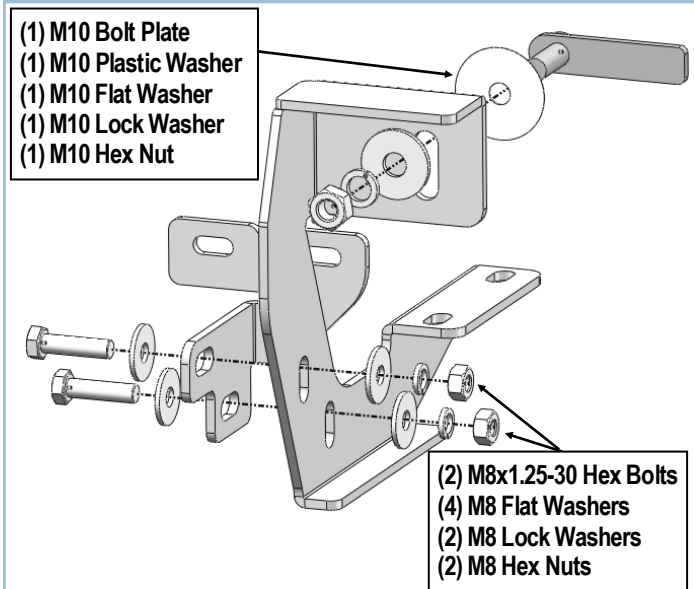


(Fig 2) Passenger Front Mounting Location

STEP 3

Select the Passenger Front Mounting Bracket (**PFM**). Attach the Bracket to the Bolt Plate with (1) M10 Flat Washer, (1) M10 Lock Washer and (1) M10 Hex Nut, (**Fig 3**). Do not fully tighten hardware at this time.

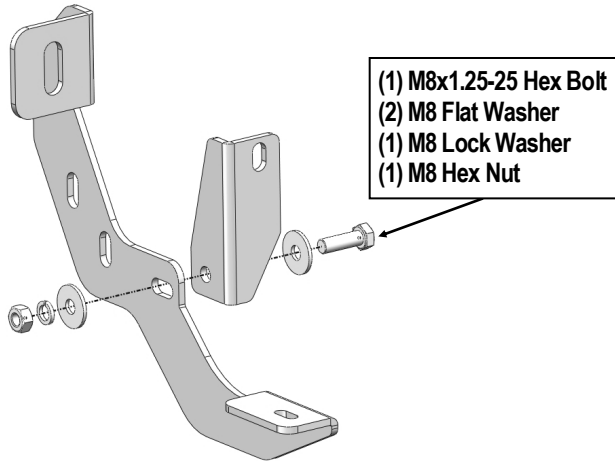
Attach (1) Support Bracket to the Passenger Front Mounting Bracket with (2) M8x1.25-30 Hex Bolts, (4) M8 Flat Washers, (2) M8 Lock washers and (2) M8 Hex Nuts, (**Fig 3**). Line up the mounting flange on the Support Bracket with the inside of the pinch weld, (**Fig 10**). Do not fully tighten hardware at this time.



(Fig 3) Passenger Front Mounting Bracket Installation

STEP 4

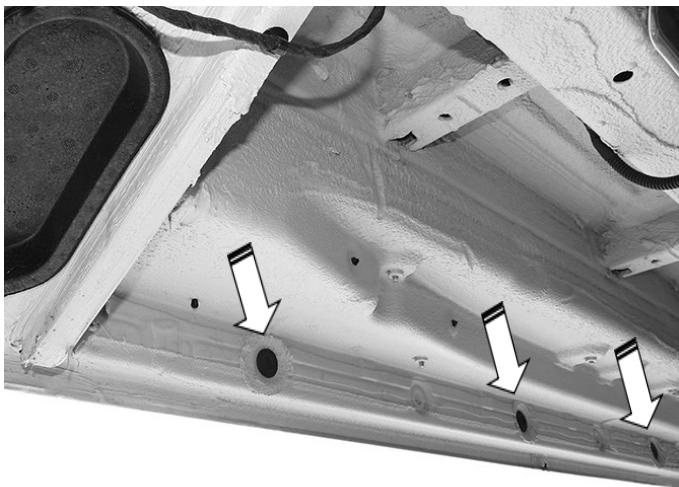
Assemble Passenger Center Mounting Bracket and Passenger Center Support Bracket with (1) M8x1.25-25 Hex Bolt, (2) M8 Flat Washers and (1) M8 Lock Washer, (1) M8 Hex Nut, (Fig 4). Do not fully tighten hardware at this time.



(Fig 4) Passenger Center Mounting Brackets Assembly

STEP 5

Repeat **Steps 2-3** to attach the remaining (3) Passenger Mounting Brackets and (3) Support Brackets to the body panel, (Fig 5).

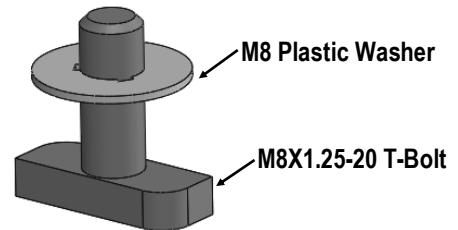


(Fig 5) Passenger Center/Rear Mounting Locations (arrows)

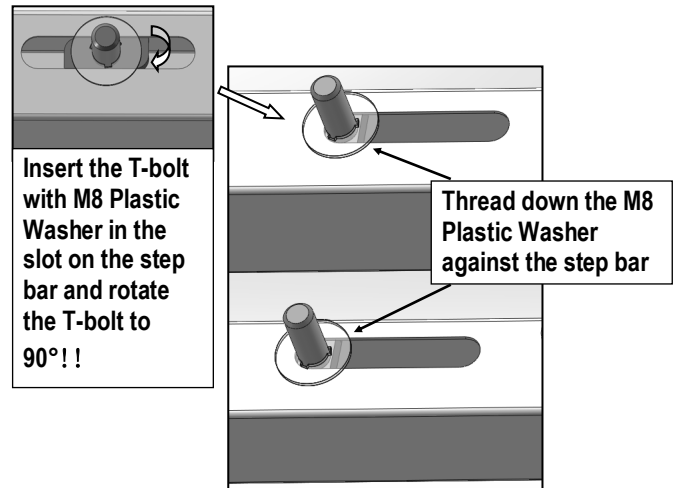
STEP 6

Once (4) brackets have been installed, select (7) M8X1.25-20mm T-Bolts, thread (7) M8 Plastic Washer on each T-Bolt, (Fig 6). Install the (7) M8X1.25-20mm T-Bolts with plastic washers in the slots on the assembled Driver side step bar. Rotate the T-Bolts to 90 degree, thread down the M8 Plastic Washers against the step bar (Fig 7).

NOTE: The Plastic Washer is designed to keep the T-Bolt in place to avoid falling into the tube during installation.



(Fig 6) Thread (1) M8 Plastic Washer on each T-Bolt Before Inserting into the slot !!!



(Fig 7) T-Bolt with plastic washer in the slot

STEP 7

Attach the Assembled Passenger Side Step Bar onto the Mounting Brackets with (7) M8 Plastic Washers, (7) M8X1.25-

20mm T-Bolts, (7) M8 Large Flat Washers, (7) M8 Nylon Lock Nuts, **(Fig 8)**. Do not fully tighten hardware at this time.

NOTE: the 2nd Mounting Bracket is located under the front pedal. Slide (1) M6X1-20mm Square Head Bolt into the channel at the bottom of the pedal **(Fig 9)**. And secure the Passenger 2nd Mounting Bracket to the pedal with (1) M6 Large Flat Washer and (1) M6 Nylon Lock Nut, **(8)**. Do not fully tighten hardware at this time.

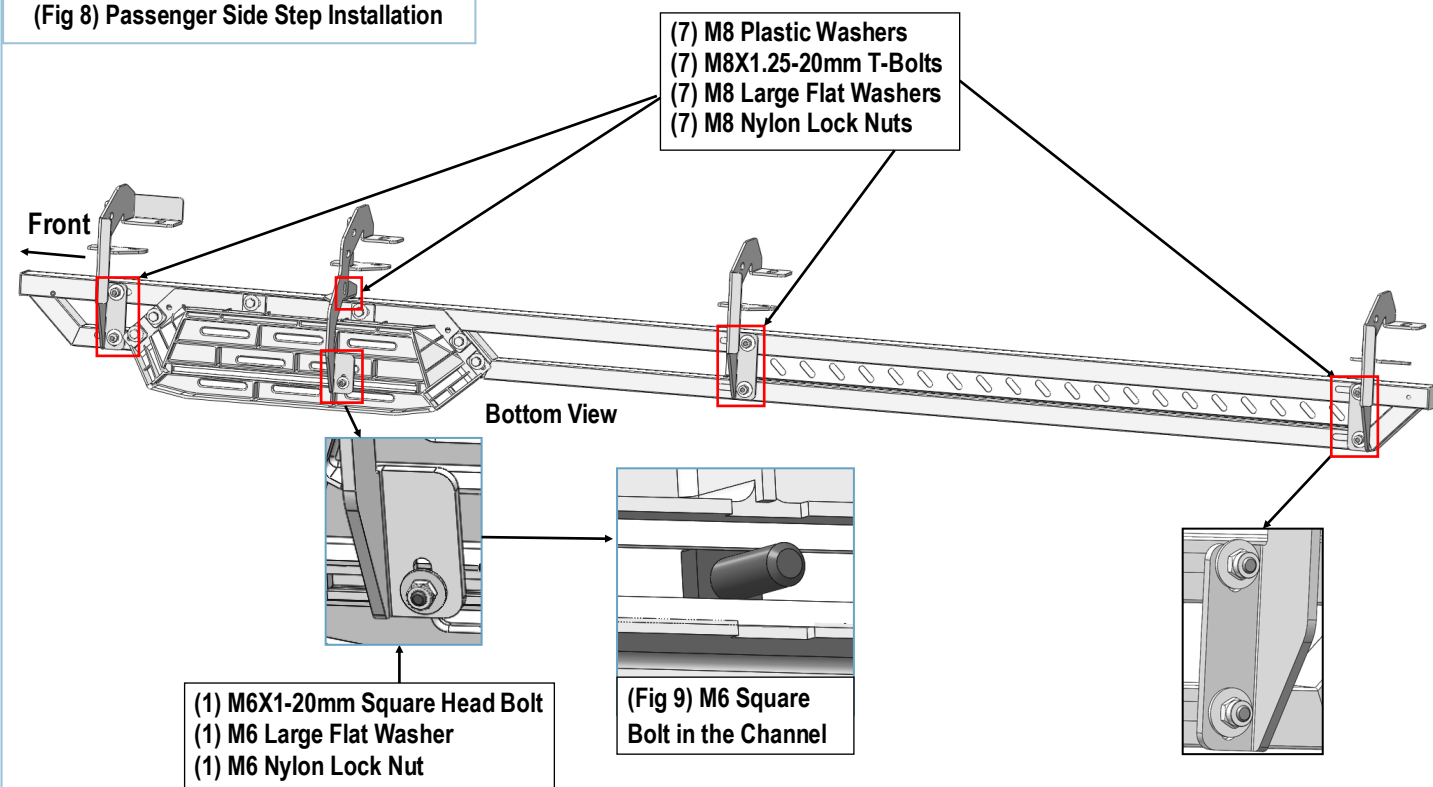
Level and adjust the Step Bar, then tighten **ONLY** the Mounting and Support Bracket hardware. **Temporarily remove the Step Bar.**

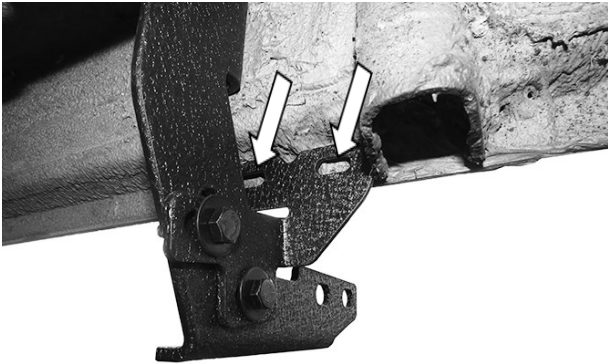
STEP 8

Make sure the Brackets are level to the vehicle. Line up the slots on each Support Bracket with the outside of the pinch weld. Mark the location of the slots onto the pinch weld, **(Fig 10)**.

IMPORTANT: Do not drill too close to the bottom edge of the pinch weld. Adjust Support Brackets and/or Mounting Brackets so that slots in Support Brackets are not too close to the bottom edge of the pinch weld. Once the Step Bar and Brackets are properly adjusted and slot locations marked, remove the Step Bar and Support Brackets. Use a 5/16" drill bit to drill the (2) holes through the pinch weld for each Support Bracket.

(Fig 8) Passenger Side Step Installation

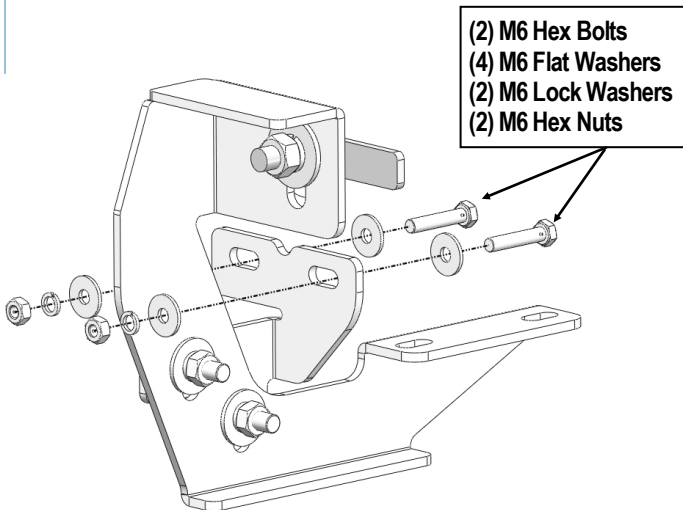




(Fig 10) Mark location of each Support Bracket onto pinch weld before drilling (Brackets for example only)

STEP 9

Attach each Support Bracket to the inside of the pinch weld with (2) M6 Hex Bolts, (4) M6 Flat Washers, (2) M6 Lock Washers and (2) M6 Hex Nuts, (Fig 11). Repeat this Step to attach the remaining (3) Passenger Support Brackets. Tighten the hardware attaching the Support Brackets to the vehicle only.



(Fig 11) Passenger Front Support Bracket Installation

STEP 10

Repeat **Step 7** to reattach the Step Bar.

STEP 11

Move to the other side of the vehicle. Repeat **Steps 2-10** to install the Driver side Step Bar. Do not tighten hardware.

Level and adjust the Step Bar, then tighten all hardware.

Installation Complete.

Attention

Do periodic inspections to the installation to make sure that all hardware is secure and tight.

In order to protect your bars/boards, please use mild soap/non-abrasive products for cleaning only.