

IARMOR EDGE™

PART#: IA-N258

BEFORE INSTALLATION

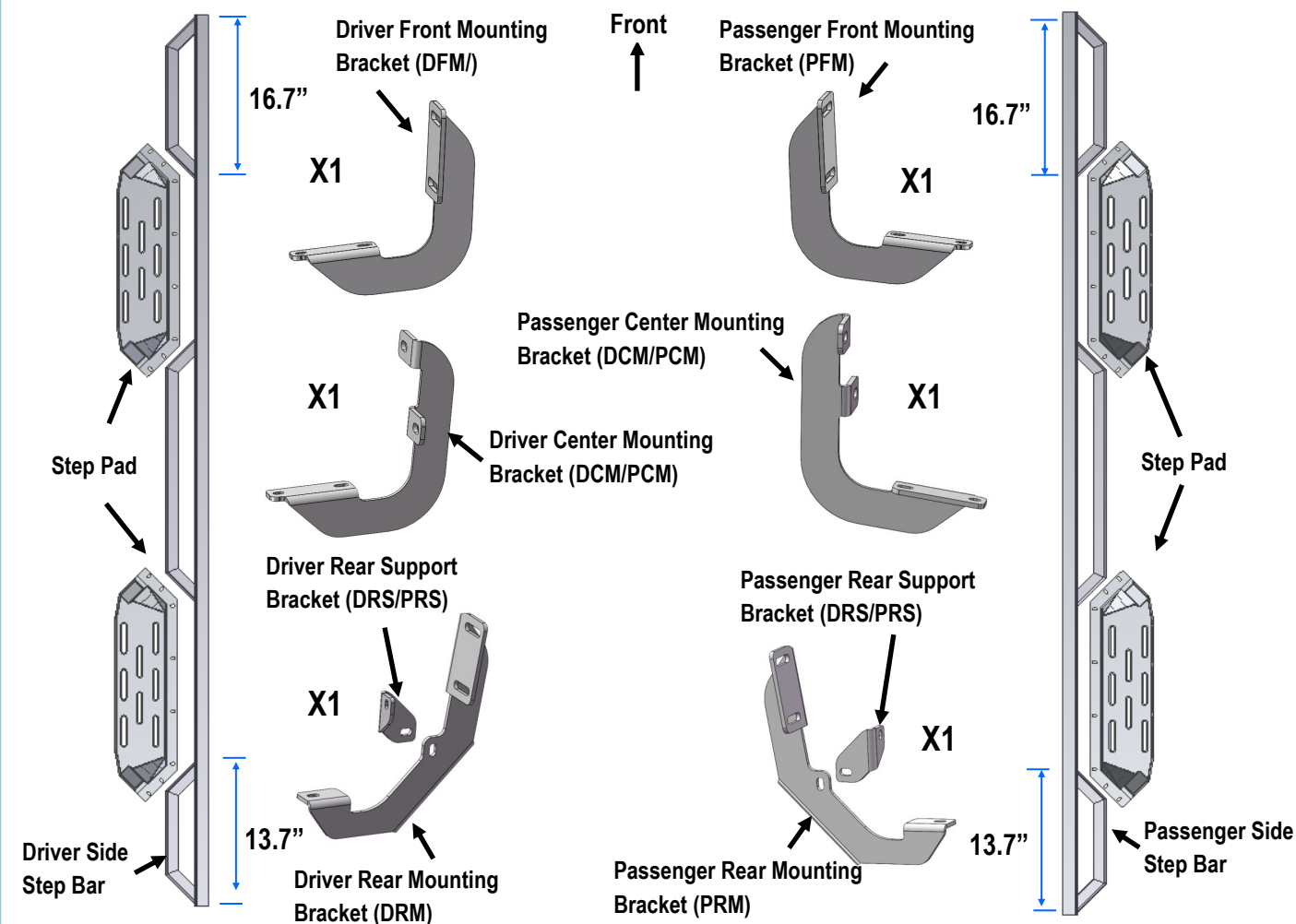
REMOVE CONTENTS FROM BOX. VERIFY ALL PARTS ARE PRESENT. READ INSTRUCTIONS CAREFULLY BEFORE STARTING INSTALLATION. ASSISTANCE IS RECOMMENDED. THANK YOU FOR CHOOSING OUR PRODUCT!

*DRILLING NOT REQUIRED

*TRIMMING NOT REQUIRED

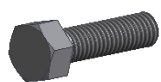
Fastener Size	Tightening Torque (ft-lbs)
6mm	6-7
8mm	16-18
10mm	31-32
12mm	56-58
14mm	92-94

PART LIST



Customer Support: info@iarmorauto.com

iArmor®



X2

M8X1.25-30mm Hex Bolt



X16

M8 Flat Washer



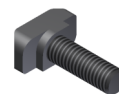
X14

M8X1.25 Nylon Lock Nut



X4

M6X1-20mm Square Head Bolt



X40

M6X1-20mm T-Bolt



X44

M6 Large Flat Washer



X44

M6X1 Nylon Lock Nut



X8

M6X1-20mm Flat Sunk Head Bolt

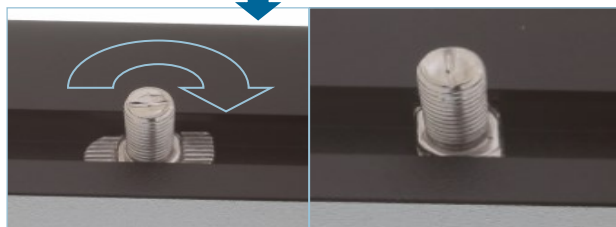
The instruction here is for your reference only. We strongly recommend the professional installer for best result. We are not responsible for any damage caused by the installation.

STEP 1

Install the Step Pads onto the step bars with (32) M6x1-20mm T-Bolts, (32) M6 Large Flat Washers, (32) M6X1 Nylon Lock Nuts and (8) M6X1-20mm Flat Sunk Head Bolts.

IMPORTANT: Don't hit the step pad by any metal hammer within step pad installation, or the step pad will be damaged.

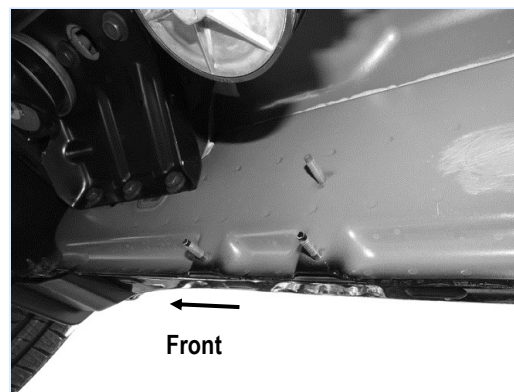
(8) M6X1-20mm T-Bolts
(8) M6 Flat Washers
(8) M6 Nylon Lock Nuts



(2) M6X1-20mm Flat Sunk Head Bolts

STEP 2

Start the installation under the passenger side of the vehicle. Locate the front (2) factory studs along the inner side of the body panel, (Fig 1). **NOTE:** Use a wire brush to remove paint buildup on the threaded studs before installing brackets.



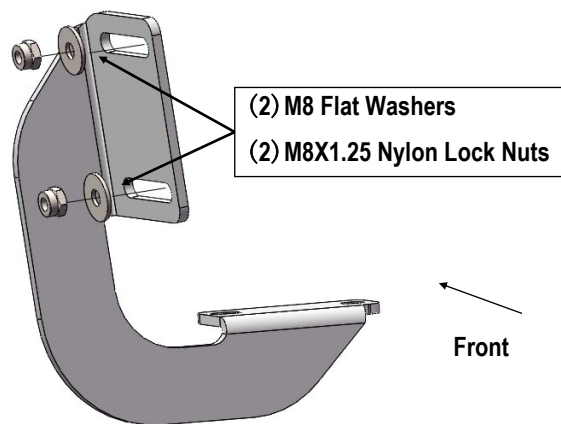
(Fig 1) Passenger Side Front Mounting Location

Customer Support: info@iarmorauto.com

iArmor®

STEP 3

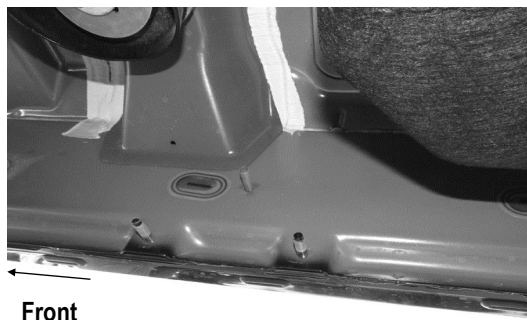
Select (1) Passenger Front Mounting Bracket (**PFM**). Attach the Bracket to the (2) factory studs with (2) M8 Flat Washers and (2) M8X1.25 Nylon Lock Nuts, (**Fig 2**). Leave brackets loose at this time.



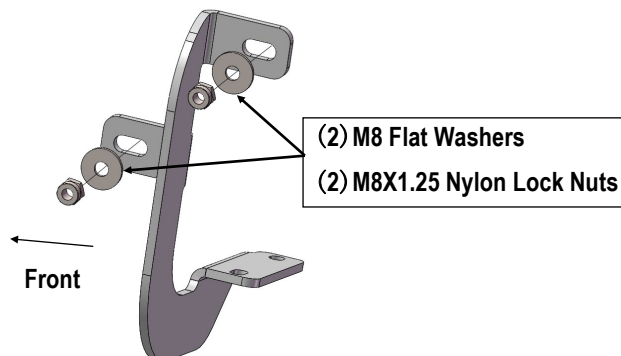
(Fig 2) Passenger Front Mounting Bracket Located

STEP 4

Move to the Passenger Center Mounting position (**Fig 3**), and repeat **step 3** to install the Passenger Center Mounting Bracket (**PCM/DCM**) (**Fig 4**).



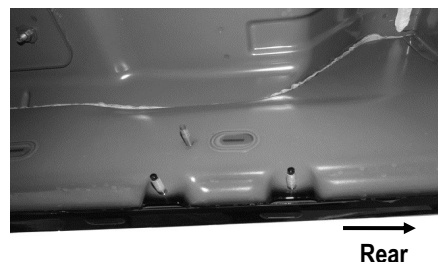
(Fig 3) Passenger Side Center Mounting Location



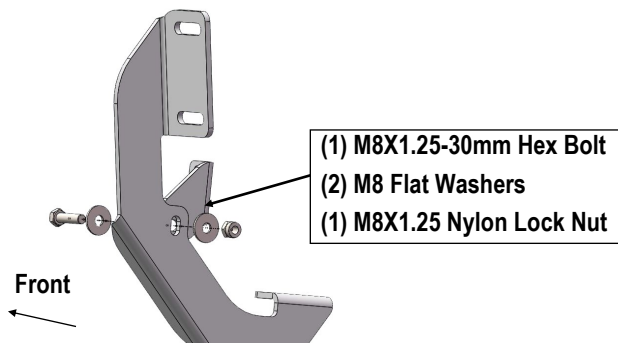
(Fig 4) Passenger Center Mounting Bracket Located

STEP 5

Move to the Passenger Rear Mounting position (**Fig 5**), attach the Passenger Rear Support Bracket (**PRS**) to the Passenger Rear Mounting Bracket (**PRM**) with (1) M8X1.25-30mm Hex Bolt, (2) M8 Flat Washers and (1) M8X1.25 Nylon Lock Nut, (**Fig 6**).



(Fig 5) Passenger Side Rear Mounting Location

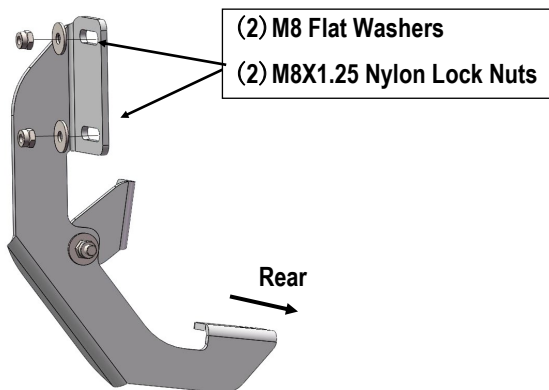


(Fig 6) Passenger Side Rear Brackets Assemble

iArmor®

STEP 6

Repeat **step 3** to install the Passenger Rear Mounting Bracket (PRM) (Fig 7).



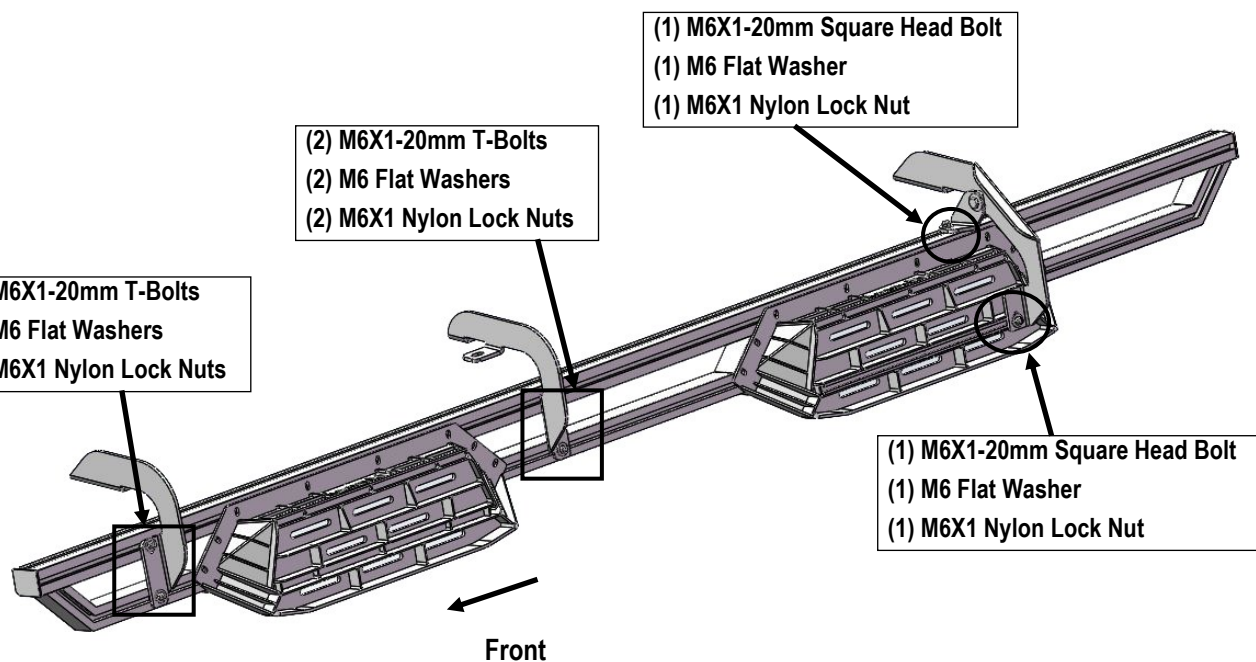
(Fig 7) Passenger Rear Mounting Bracket Located

STEP 7

Attach the Assembled Step Bar to the Brackets using (4) 6mmX1-20mm T-Bolts, (2) M6X1-20mm Square Head Bolts, (6) M6 Flat Washers and (6) M6 Nylon Lock Nuts (**Fig 8**). Do not tighten hardware at this time.

STEP 8

Level and adjust the Step Bar as necessary and fully tighten all hardware.



(Fig 8) Passenger Side Step Installation

iArmor®

STEP 9

Repeat **Steps 1—8** for Driver/left side Step Bar installation.

STEP 10

Do periodic inspections to the installation to make sure that all hardware is secure and tight.

Attention

In order to protect your bars/boards, please use only mild soap/non-abrasive products for cleaning.