

iArmor®

iArmor® by APS

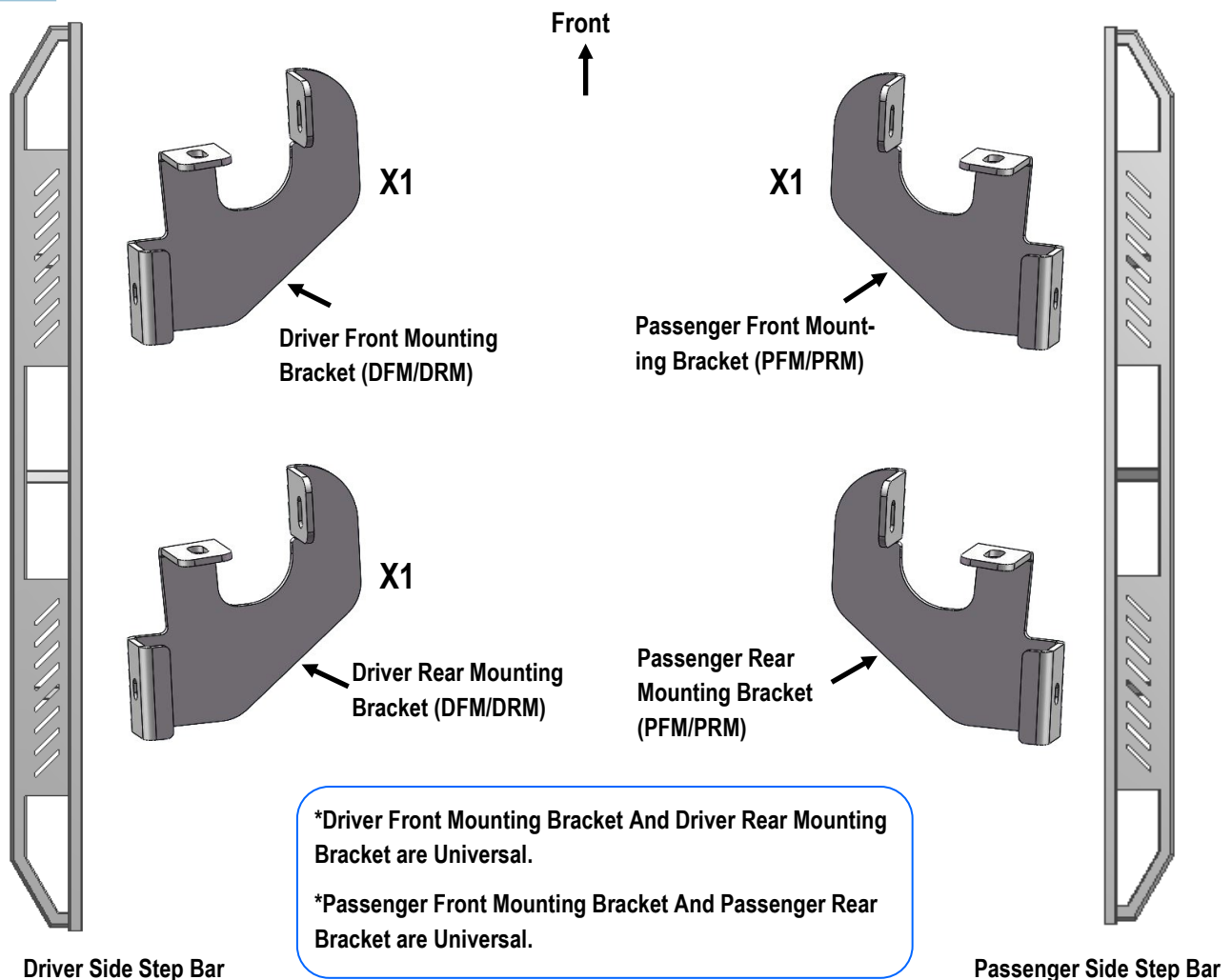
PART#: IA-S133

BEFORE INSTALLATION

REMOVE CONTENTS FROM BOX. VERIFY ALL PARTS ARE PRESENT. READ INSTRUCTIONS CAREFULLY BEFORE STARTING INSTALLATION. ASSISTANCE IS RECOMMENDED. THANK YOU FOR CHOOSING OUR PRODUCT!

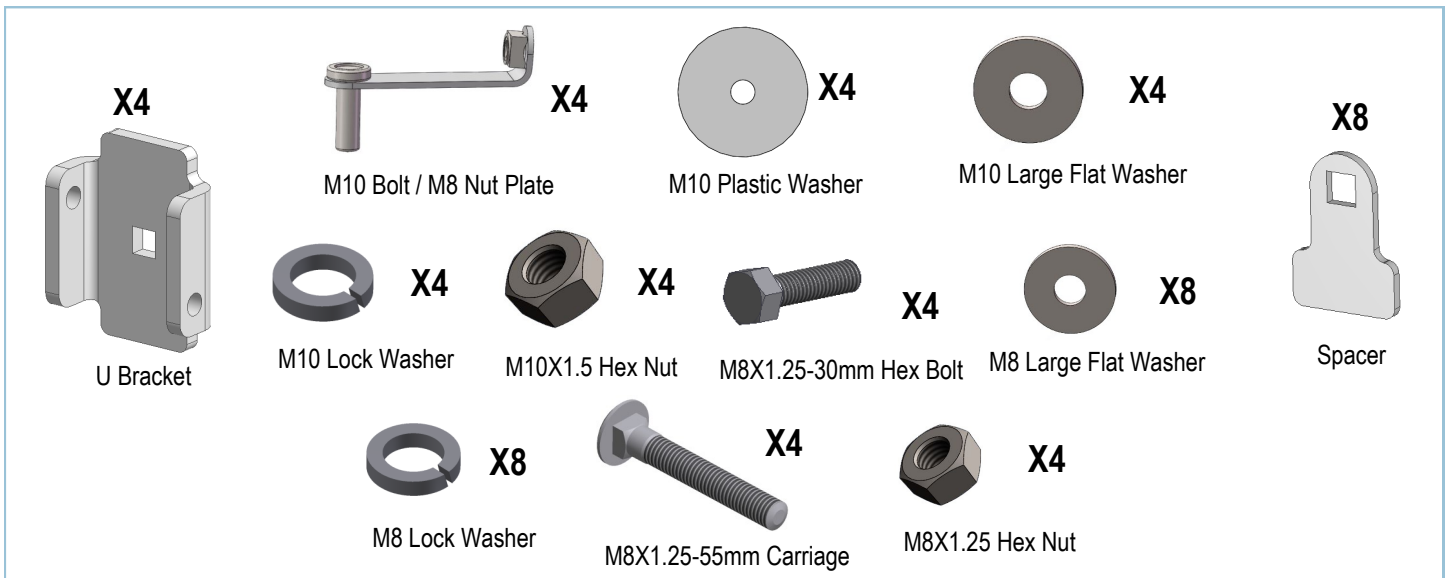
| Fastener Size | Tightening Torque (ft-lbs) |
|---------------|----------------------------|
| 6mm | 6-7 |
| 8mm | 16-18 |
| 10mm | 31-32 |
| 12mm | 56-58 |
| 14mm | 92-94 |

PART LIST



Customer Support: info@iarmorauto.com

iArmor®



The instruction here is for your reference only. We strongly recommend the professional installer for best result. We are not responsible for any damage caused by the installation.

STEP 1

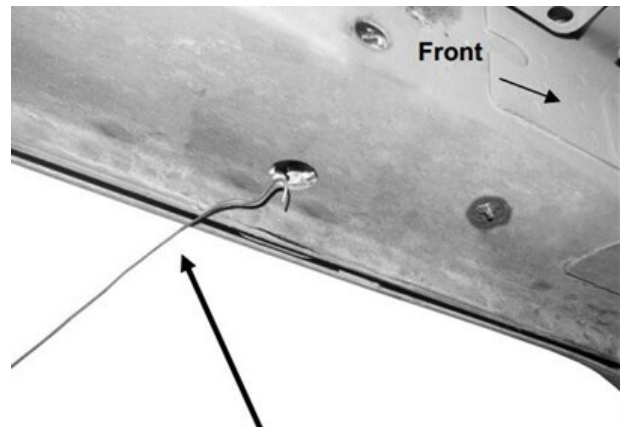
Start installation on the driver side. Locate the factory holes at the bottom and inner side of the floor panel, **(Fig 1)**.

IMPORTANT: On some vehicles, the body panel may be filled with expanding foam insulation. Clear out the foam inside the mounting holes, **(Fig 2)**.

Use These (2) Holes. Remove Foam As Necessary



(Fig 1) Driver Side Front Mounting Location

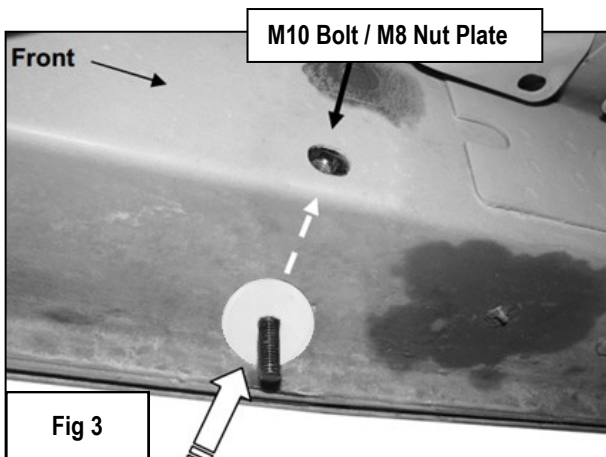


**(Fig 2) Clear Out The Foam In The Mounting Holes
(Use Wire To Pull Foam From Floor Panel)**

STEP 2

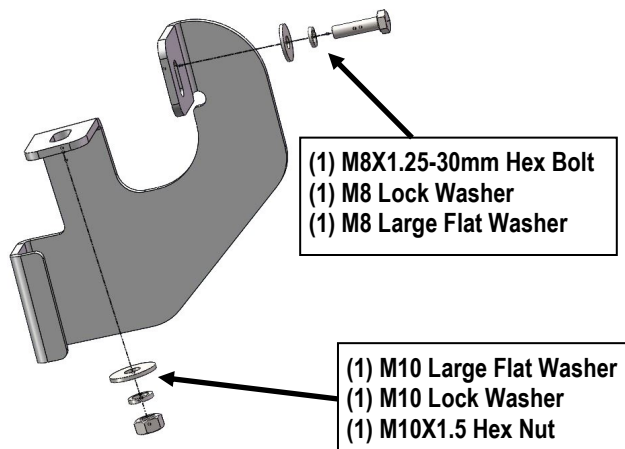
Select (1) M10 Bolt / M8 Nut Plate. Insert the bent end with the 8mm nut into the hole in the bottom of the floor panel, **(Fig 3)**. Line up the hex nut with the hole in the side of the floor panel. Thread (1) M10 Plastic Washer onto the M10 Bolt end of the Bolt /Nut Plate, **(Fig 3)**. **NOTE:** The Plastic Washer is provided to hold the Bolt /Nut Plate in position during Bracket installation.

iArmor®



STEP 3

Select (1) Driver Front Mounting Bracket (**DFM/DRM**). Attach the Bracket to the installed M10 Bolt / M8 Nut Plate with (1) M10 Large Flat Washer, (1) M10 Lock Washer and (1) M10X1.5 Hex Nut. Attach the Bracket to the M8 Nut with (1) M8X1.25-30mm Hex Bolt, (1) M8 Lock Washer and (1) M8 Large Flat Washer, (**Fig 4**). Do not fully tighten hardware at this time.

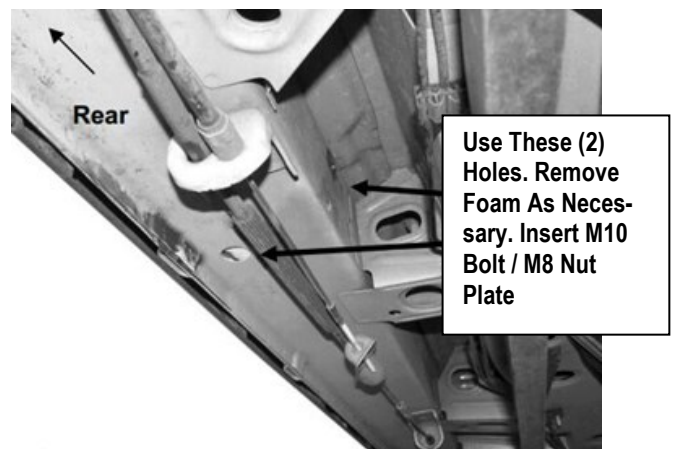


(Fig 4) Driver Front Mounting Bracket Installation

STEP 4

Move to the Driver Side Rear Mounting Location of the vehicle. Locate the round hole in the bottom of the floor panel as described in Step 1, (**Fig 5**). Repeat **Steps 2 – 3** to install the Driver Rear Mounting Bracket (**DFM/DRM**) in the rear location.

Note: Driver Front Mounting Bracket and Driver Rear Mounting Bracket are universal.



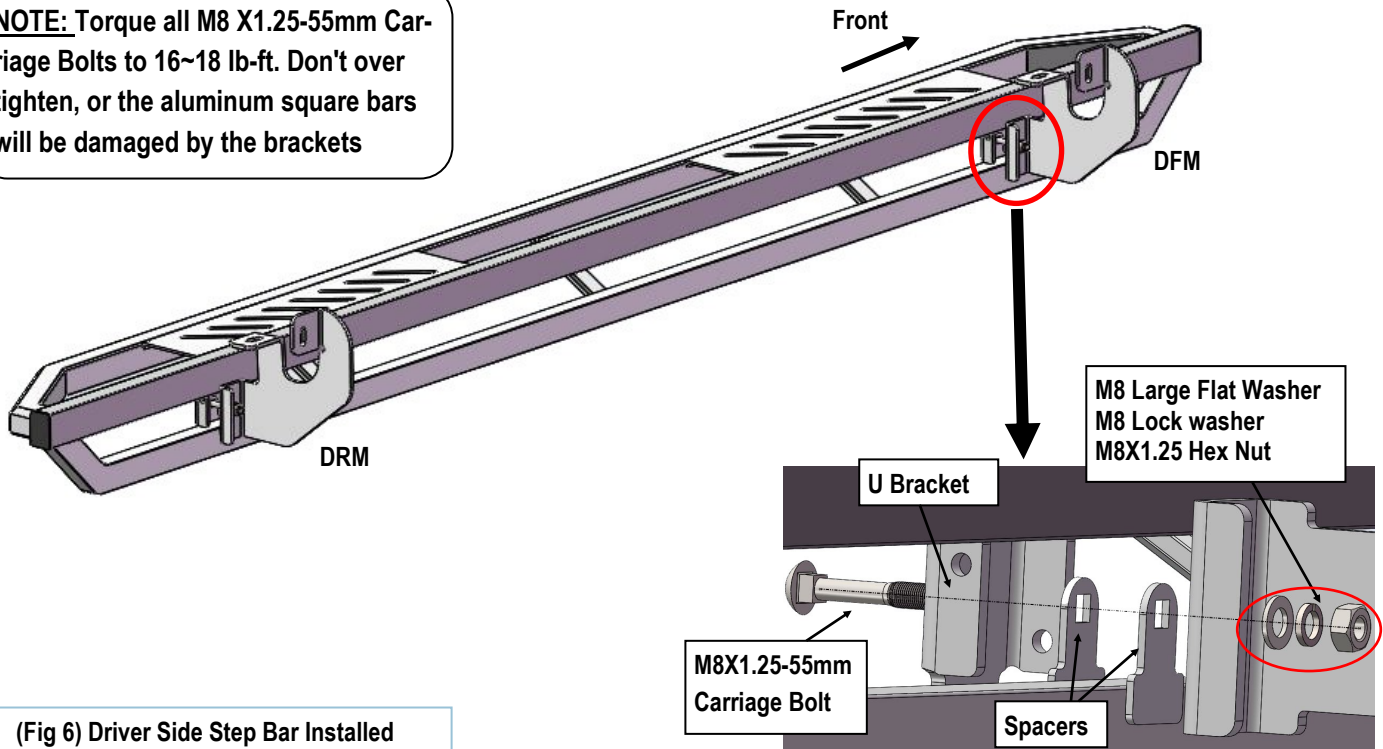
(Fig 5) Driver Side Rear Mounting Location

STEP 5

Once all (2) driver side mounting brackets are installed, select and attach the Driver Side Step Bar onto the Mounting Brackets with (2) U Brackets, (4) Spacers, (2) M8X1.25-55mm Carriage Bolts, (2) M8 Large Flat Washers, (2) M8 Lock Washers and (2) M8X1.25 Hex Nuts (**Fig 6**). Do not fully tighten hardware at this time.

iArmor®

NOTE: Torque all M8 X1.25-55mm Carriage Bolts to 16~18 lb-ft. Don't over tighten, or the aluminum square bars will be damaged by the brackets



(Fig 6) Driver Side Step Bar Installed

STEP 6

Properly level and adjust the Step Bar and fully tighten all hardware.

STEP 7

Move to the passenger side of the vehicle. Repeat **Steps 1-6** to install passenger side step bar.

Installation completed (Fig 7).



(Fig 7) Installation Completed

Attention

Do periodic inspections to the installation to make sure that all hardware is secure and tight.

In order to protect your bars/boards, please use only mild soap/non-abrasive products for cleaning.