

# iArmor<sup>®</sup>

## IARMOR EDGE™

PART#: IA-N071H

### BEFORE INSTALLATION

REMOVE CONTENTS FROM BOX. VERIFY ALL PARTS ARE PRESENT. READ INSTRUCTIONS CAREFULLY BEFORE STARTING INSTALLATION. ASSISTANCE IS RECOMMENDED. THANK YOU FOR CHOOSING OUR PRODUCT!

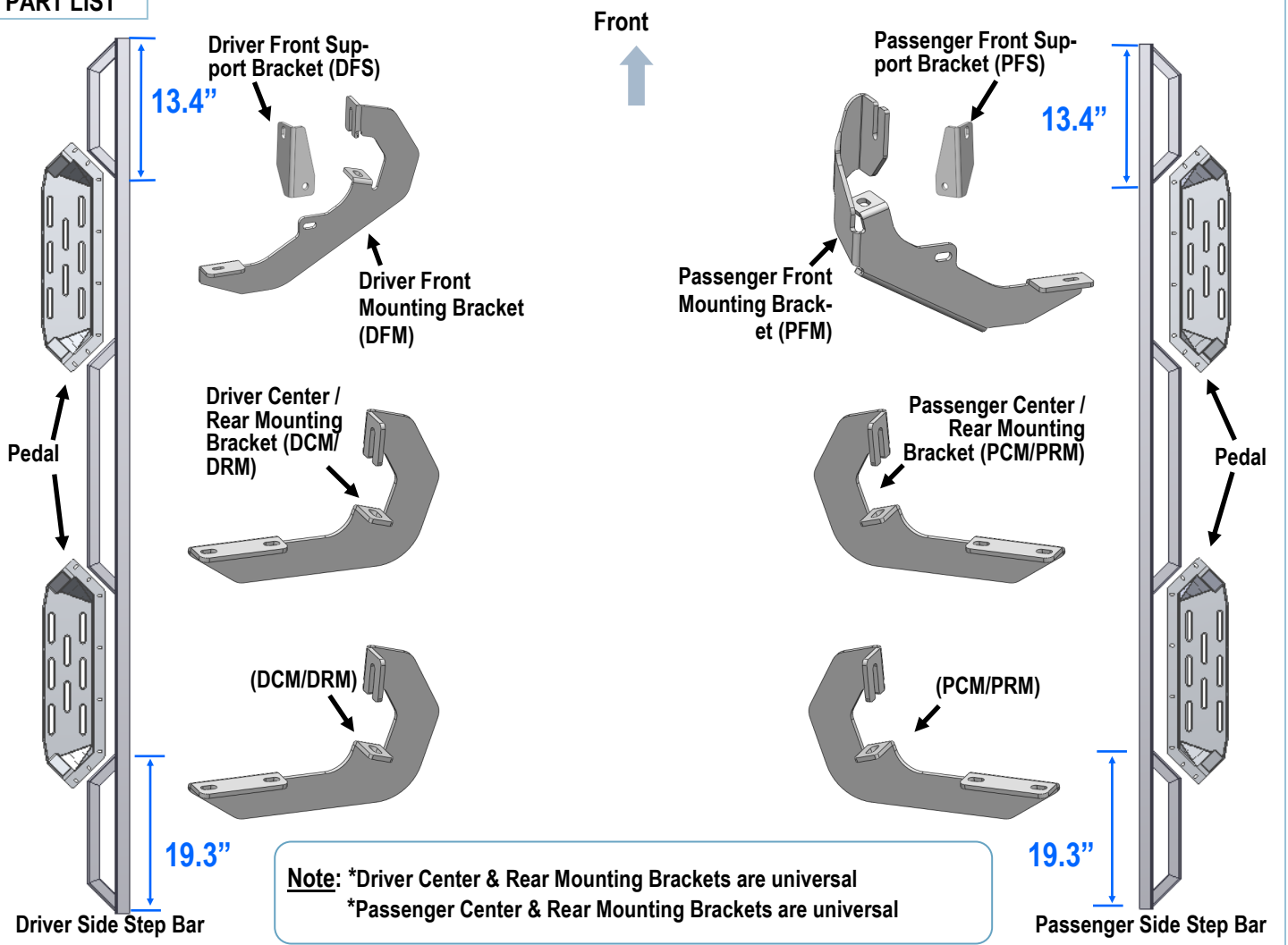
\*ROCKER PANEL MOUNT

\*TRIMMING IS REQUIRED

### Torque Value

| Fastener Size | Tightening Torque (ft-lbs) | Required |
|---------------|----------------------------|----------|
| 6mm           | 6-7                        | √        |
| 8mm           | 16-18                      | √        |
| 10mm          | 31-32                      | X        |
| 12mm          | 56-58                      | X        |
| 14mm          | 92-94                      | X        |

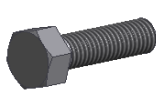
### PART LIST



Customer Support: [info@iarmorauto.com](mailto:info@iarmorauto.com)

# iArmor<sup>®</sup>

| Hardware Package |     |                         |      |     |                           |
|------------------|-----|-------------------------|------|-----|---------------------------|
| Item             | QTY | Description             | Item | QTY | Description               |
| 1#               | 38  | M8X1.25-25 Hex Bolts    | 6#   | 2   | M6X1-20 Square Head Bolts |
| 2#               | 50  | M8 Large Flat Washers   | 7#   | 2   | M6 Large Flat Washers     |
| 3#               | 36  | M8 Lock Washers         | 8#   | 2   | M6X1 Nylon Lock Nuts      |
| 4#               | 12  | M8X1.25 Nylon Lock Nuts | 9#   | 10  | M8X1.25-20 T Bolts        |
| 5#               | 12  | M8 Clip Nuts            | 10#  | 10  | M8 Plastic Washers        |



1#



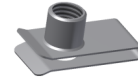
2#



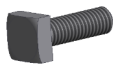
3#



4#



5#



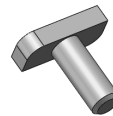
6#



7#



8#



9#



10#

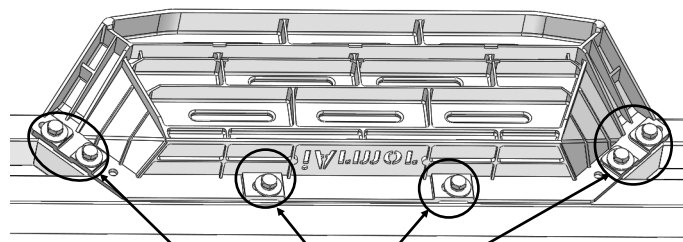
# iArmor®

The instruction here is for your reference only. We strongly recommend the professional installer for best result. We are not responsible for any damage caused by the installation.

## STEP 1

Install (4) Pedals onto the step bars with (24) M8X1.25-25mm Hex Bolts, (24) M8 Large Flat Washers and (24) M8 Lock Washers.

**IMPORTANT:** Don't hit the pedal with any metal hammer within pedal installation, or the pedal will be damaged.

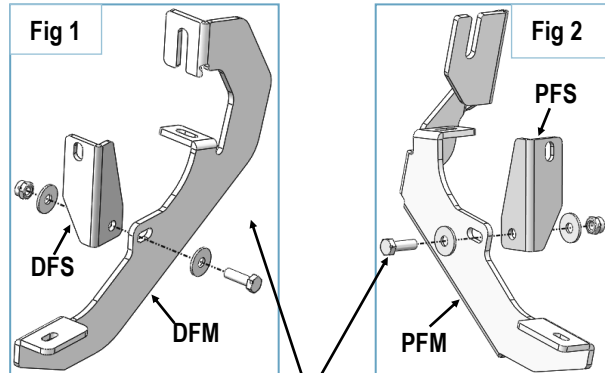


(6) M8X1.25-25 Hex Bolts  
(6) M8 Large Flat Washers  
(6) M8 Lock Washers

## STEP 2

Assemble following mounting brackets and support brackets together with (1) M8X1.25-25mm Hex Bolt, (2) M8 Large Flat Washers and (1) M8 Nylon Lock Nut:

- (1) Driver Front Mounting Bracket (DFM) & Driver Front Support Bracket (DFS) (Fig 1).
- (2) Passenger Front Mounting Bracket (PFM) & Passenger Front Support Bracket (PFS) (Fig 2).

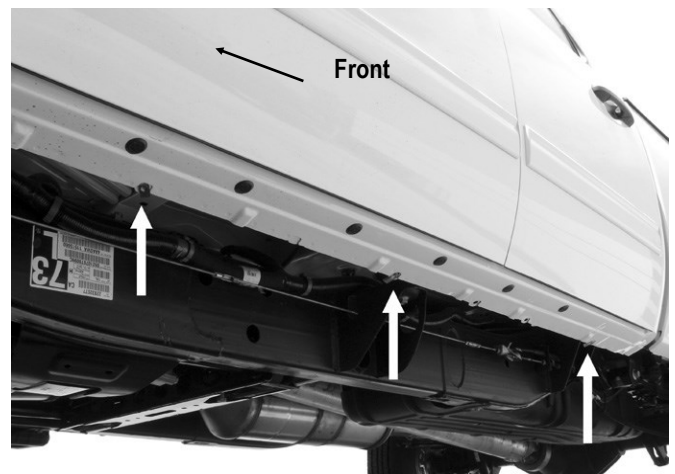


(2) M8X1.25-25mm Hex Bolts  
(4) M8 Large Flat Washers  
(2) M8 Nylon Lock Nuts

## STEP 3

Start the installation under the driver side of the vehicle. Locate the 5 tabs along the bottom edge of the body, (pinch weld). Mounting Brackets will bolt to the 1st, 2nd and 5th mounting tabs, (Fig 3). Directly above each tab is a top mounting location on the side of the body panel.

**NOTE:** It will be helpful for identifying the mounting holes to hold up a mounting bracket in place.



(Fig 3) Driver Side (3) Mounting Locations

# iArmor®

## STEP 4

Determine the correct procedure for your model/year and each bracket location.

(1) Locate bottom mounting location on the edge of the pinch weld:

a) Flat tab on pinch weld with factory installed weld nut:

Thread hex bolt into weld nut from the backside-down to clear paint from threads, **(Fig 4)**.

b) Flat tab on pinch weld with hole:

Select (1) M8 Clip-on Nut. Slide the Clip-on Nut over the tab with the nut facing up behind the tab, **(Figs 5-7)**.

Line up threaded nut with hole in the tab. Repeat for each mounting location.

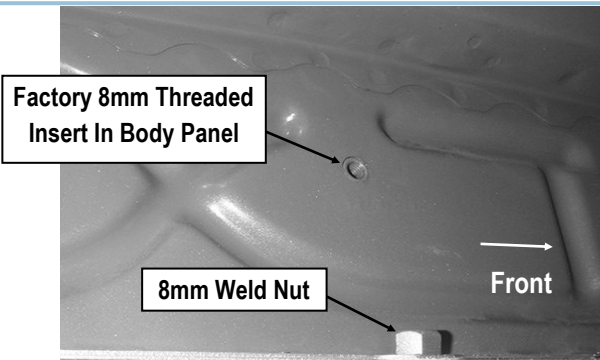
(2) Locate top mounting location on the back side of the body panel.

a) Models with factory installed threaded insert in body panel:

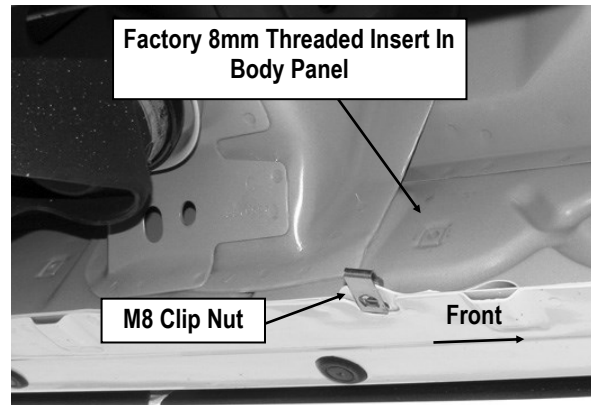
Thread 8mm Hex Bolt into threaded insert to clear paint as required, **(Figs 4 & 5)**.

b) Large and small hole in side of body panel:

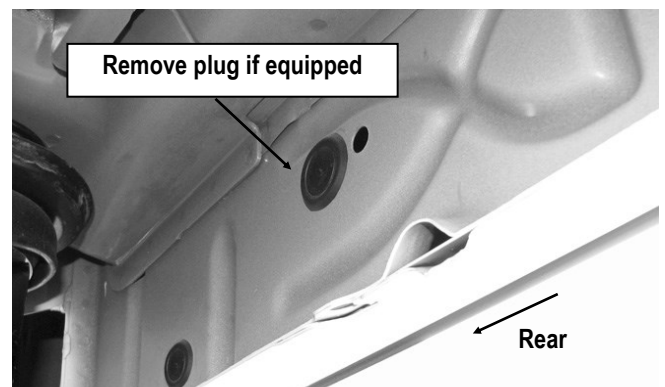
Remove the rubber plug from the larger hole, **(Fig 6)**. Select (1) M8 Clip Nut. Slide the Clip Nut into the larger hole. Line up the threaded nut with the smaller hole, **(Fig 7)**.



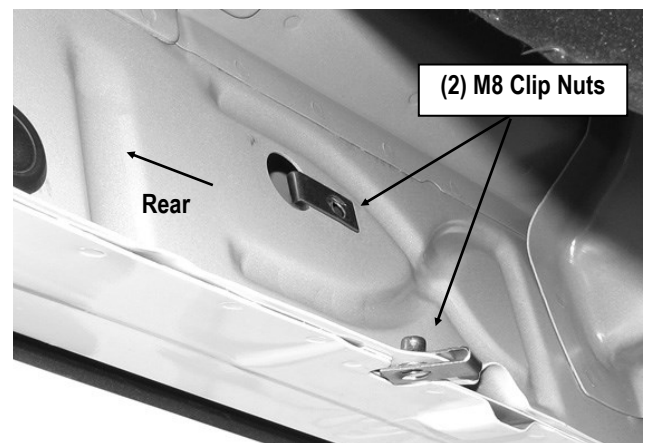
(Fig 4) Driver Side Front Mounting Location



(Fig 5) Driver Side Center Mounting Location



(Fig 6) Driver Side Rear Mounting Location

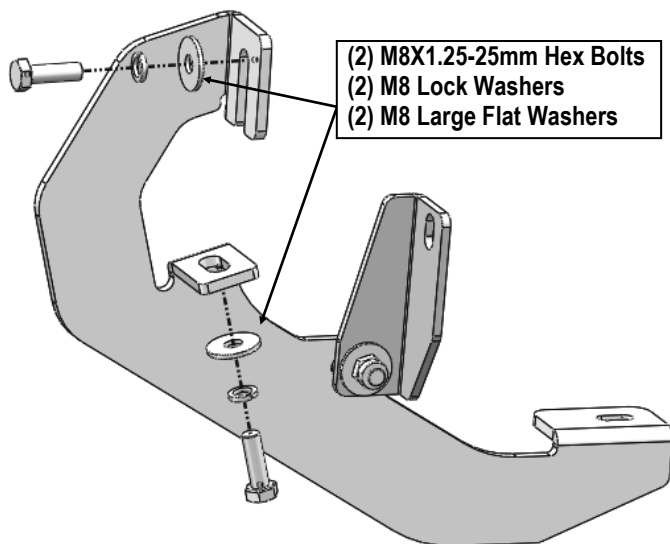


(Fig 7) Driver Side Rear Mounting Location

# iArmor®

## STEP 5

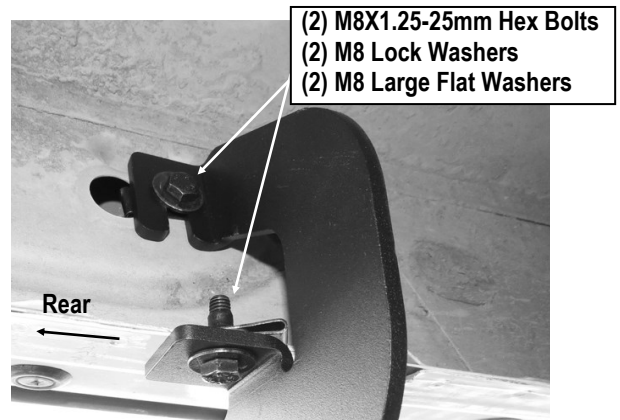
Select the assembled Driver Front Mounting Bracket. Bolt the assembled Mounting Bracket to the Clip Nuts and/or the factory threaded holes with (2) M8X1.25-25mm Hex Bolts, (2) M8 Lock Washers and (2) M8 Large Flat Washers, (Fig 8). Do not tighten hardware at this time.



(Fig 8) Driver Front Bracket Installation

## STEP 6

Repeat **Steps 4-5** to install the (2) remaining driver side Mounting Brackets, (Fig 9).

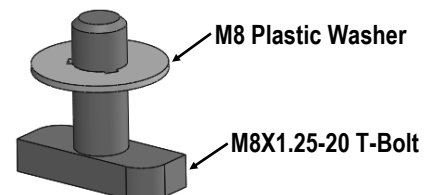


(Fig 9) Driver Center / Rear Bracket Installed

## STEP 7

Once (3) brackets have been installed, select (5) M8X1.25-20mm T-Bolts, thread (1) M8 Plastic Washer on each T-Bolt, (Fig 10). Install the (5) M8X1.25-20mm T-Bolts with plastic washers in the slots on the assembled Driver side step bar. Rotate the T-Bolts to 90 degree, thread down the M8 Plastic Washers against the step bar (Fig 11).

**NOTE:** The Plastic Washer is designed to keep the T-Bolt from falling into the bar tube during installation.



(Fig 10) Thread (1) M8 Plastic Washer on each T-Bolt Before Inserting into the bar tube!!!

# iArmor®

## STEP 8

Insert the T-bolt with M8 Plastic Washer in the slot on the step bar and rotate the T-bolt to 90°!!

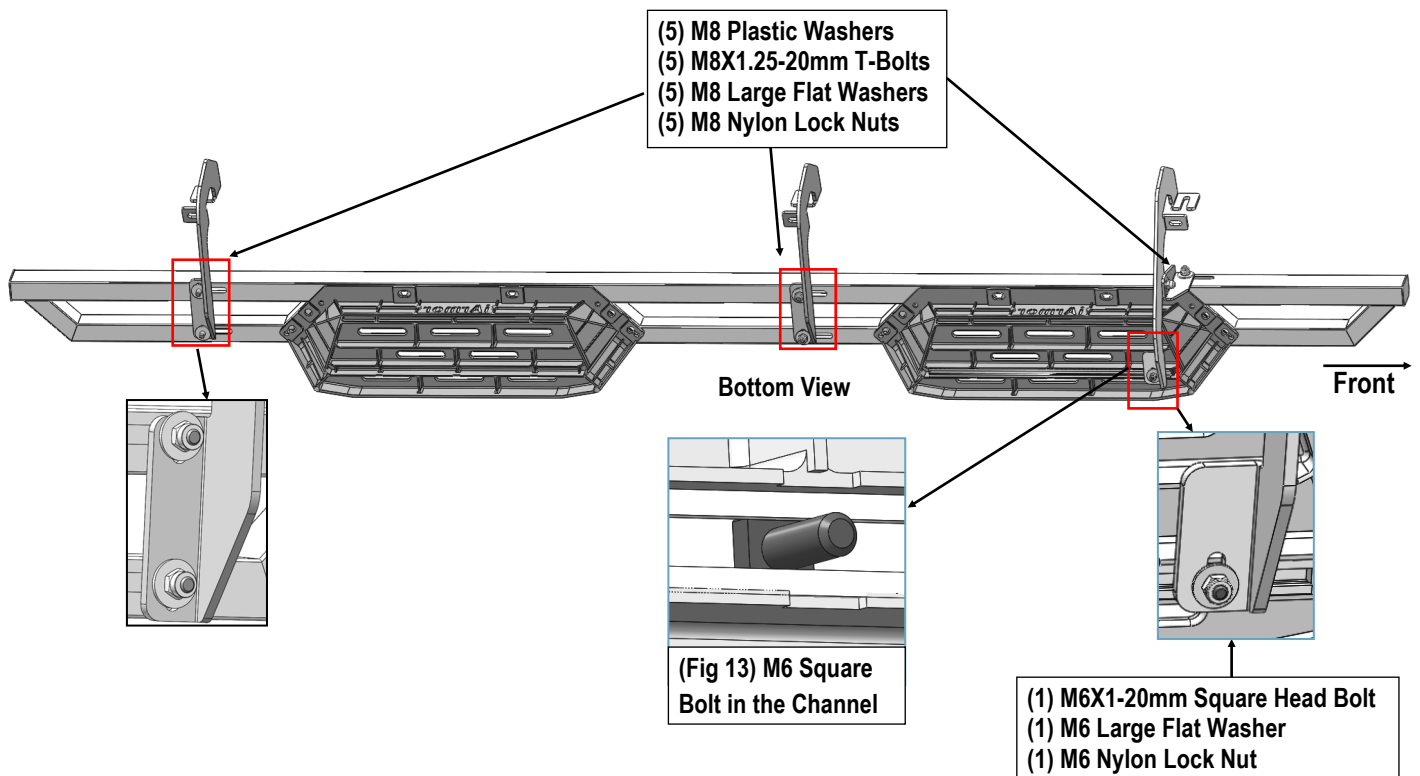
Thread down the M8 Plastic Washer against the step bar

(Fig 11) T-Bolt with plastic washer in the slot

Attach the Assembled Driver Side Step Bar onto the Mounting Brackets with (5) M8 Plastic Washers, (5) M8X1.25-20mm T-Bolts, (5) M8 Large Flat Washers, (5) M8 Nylon Lock Nuts, (Fig 12). Do not fully tighten hardware at this time.

**NOTE:** the Driver Front Mounting Bracket is located under the front pedal. Slide (1) M6X1-20mm Square Head Bolt into the channel at the bottom of the front pedal (Fig 13). And secure the Driver Front Mounting Bracket to the pedal with (1) M6 Large Flat Washer and (1) M6 Nylon Lock Nut, (Fig 12).

(Fig 12) Driver Side Step Installation



## STEP 9

Move to the passenger side of the vehicle. On the passenger side, determine if the vehicle is equipped with a plastic diesel exhaust fluid (DEF) tank, (Figs 14 & 16).

(1) Models without DEF tank skip to Step 10.

(2) Models with DEF tank:

The tank sits close to the side of the body. With specialized tools, the Passenger Front Mounting Bracket can be installed but room is very limited. Determine model/year of vehicle before proceeding.

A) Up to 2016 models:

It may be easier to drop the tank down to access the inner side of the body panel for the Passenger Side Front Mounting Bracket installation. Tank will not need to be removed, only dropped down for access to mounting location. **IMPORTANT:** If tank is full, it will be very heavy and assistance is highly recommended to avoid injury or damage to the vehicle or the tank. It is recommended that installation is performed when the DEF tank is low on fluid before dropping the tank.

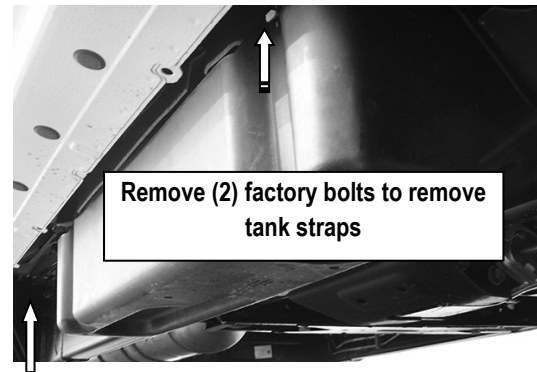
- On models with plastic lower tray under the tank, remove the (3) hex bolts attaching the tray to the frame, (Fig 14), and remove the tray.
- Release the tank filler hose. Release the plug for the sending unit on the top of the tank.
- Support the tank with a floor jack. Place a smooth flat surface, (wooden block for example), between the floor jack and the tank to avoid damaging the plastic tank. Do not push up on the tank; only support the weight of the tank with the jack.
- Remove the (2) bolts securing the tank straps to the vehicle, (Fig 15). Tilt the straps to release from the brackets. Slowly lower the tank until the top of the tank is almost visible. Use blocks or stands to support the tank while installing the Passenger Front Mounting Bracket.
- Proceed to Step 10.

B) 2017-Up models:

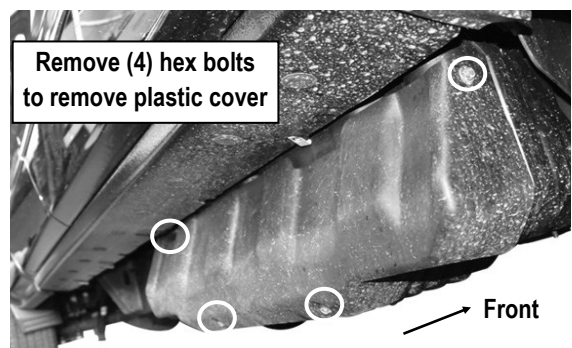
- Remove the (4) hex bolts attaching plastic cover to DEF tank, (Fig 16) and remove plastic cover, (Fig 17). **NOTE:** On 2017 2500/3500 models, only remove plastic cover from DEF tank. Do not lower DEF tank and proceed to Step 10.



(Fig 14) 07-16 Passenger Side Front Pictured with DEF Tank Cover.



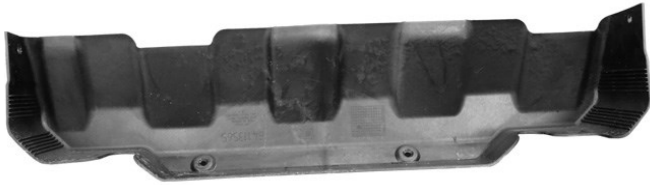
(Fig 15) 07-16 Passenger Side DEF Tank and Cover



(Fig 16) 2017-Up Passenger Side Pictured w/DEF tank cover.

# iArmor®

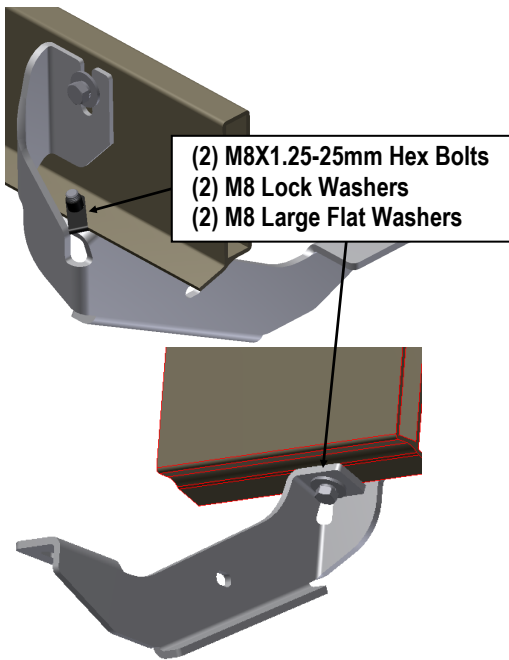
Front ←



(Fig 17) 2017 Passenger Side DEF Cover Removed

## STEP 10

Locate the first tab on the edge of the pinch weld, (Figs 4-7). Select the Assembled Passenger Front Mounting Bracket. Bolt the assembled Mounting Bracket to the Clip Nuts and/or the factory threaded holes with (2) M8X1.25-25mm Hex Bolts, (2) M8 Lock Washers and (2) M8 Large Flat Washers, (Fig 18). Do not tighten hardware.



(Fig 18) Passenger Front Mounting Bracket Installed

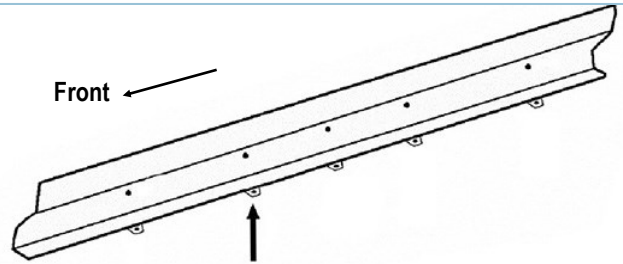
## STEP 11

2007-2016 models: Repeat **Steps 3-6** for the (2) remaining passenger side Bracket installations.

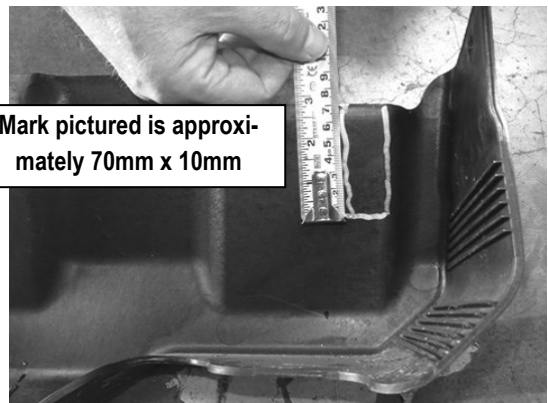
## STEP 12

**2017-Up 2500/3500 DEF tank models:** Locate the 2nd tab bracket location along the bottom edge of the body, (pinch weld), (Fig 19). Hold the DEF cover in place and mark the location onto the cover, (Fig 20). Use a sharp knife or hacksaw blade to carefully cut a slot in the plastic cover to clear the 2nd Bracket, (Fig 21). Remove as little plastic as possible.

Front ←



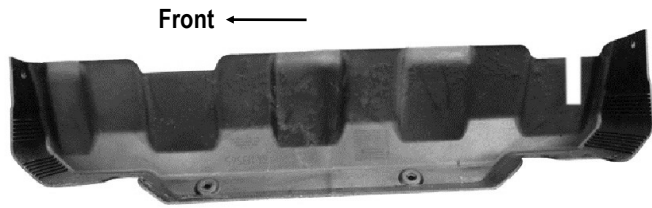
(Fig 19) Passenger Side 2nd Bracket Location from Back of Body Panel



(Fig 20) 2017-Up Passenger Side DEF Cover Marked for Trimming



# iArmor®



(Fig 21) 2017-Up Passenger Side DEF Cut for Example Only

## STEP 13

Repeat **Steps 7 & 8** to install the Passenger Assembled Step Bar.

## STEP 14

Once the Assembled Step Bar has been installed and all hardware fully tightened, reinstall the DEF tank and cover, if equipped, as described in **Step 9**.

Installation Completed!!

### Attention

**Do periodic inspections to the installation to make sure that all hardware is secure and tight.**

**In order to protect your bars/boards, please use mild soap/non-abrasive products for cleaning only.**