

## IARMOR EDGE™

PART#: IA-N171

### BEFORE INSTALLATION

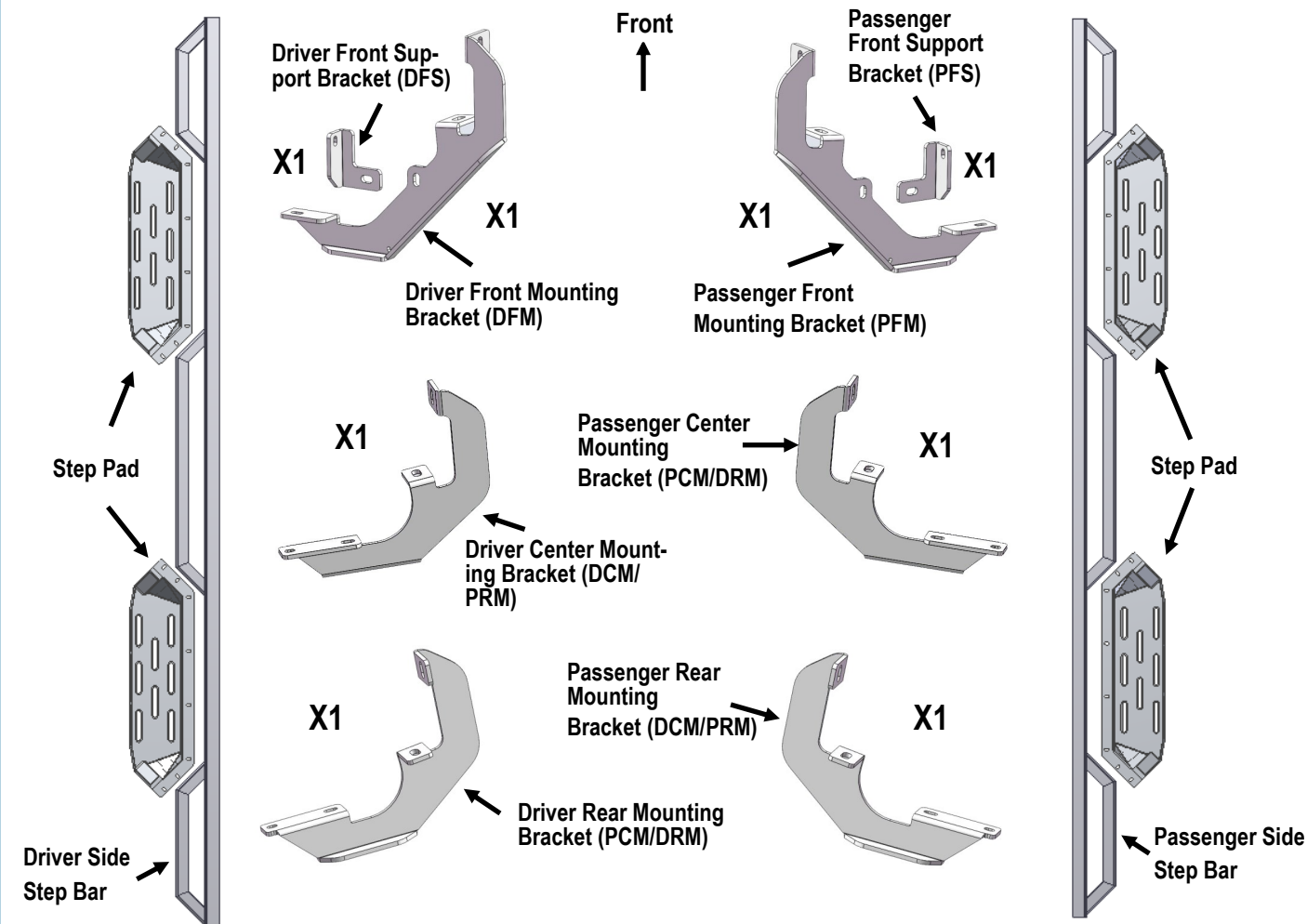
REMOVE CONTENTS FROM BOX. VERIFY ALL PARTS ARE PRESENT. READ INSTRUCTIONS CAREFULLY BEFORE STARTING INSTALLATION. ASSISTANCE IS RECOMMENDED. THANK YOU FOR CHOOSING OUR PRODUCT!

\*DRILLING NOT REQUIRED

\*TRIMMING NOT REQUIRED

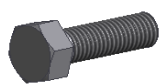
Fastener Size	Tightening Torque (ft-lbs)
6mm	6-7
8mm	16-18
10mm	31-32
12mm	56-58
14mm	92-94

### PART LIST



Customer Support: [info@iarmorauto.com](mailto:info@iarmorauto.com)

# iArmor®



X 14

M8x1.25-30mm Hex Bolt



X 16

M8 Flat Washer



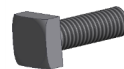
X 12

M8 Lock Washer



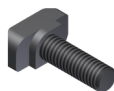
X 2

M8 Nylon Lock Nut



X 4

M6X1-20mm Square Head Bolt



X 40

M6X1-20mm T-Bolt



X 44

M6 Large Flat Washer



X 44

M6 Nylon Lock Nut



X 8

M6X1-20mm Flat Sunk Bolt

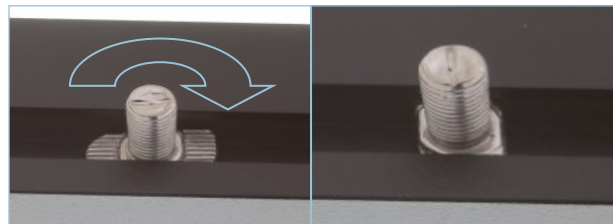
The instruction here is for your reference only. We strongly recommend the professional installer for best result. We are not responsible for any damage caused by the installation.

## STEP 1

Install the Step Pads onto the step bars with (32) M6X1-20mm T-Bolts, (32) M6 Large Flat Washers, (32) M6 Nylon Lock Nuts and (8) M6X1-20 Flat Sunk Head Bolts.

**IMPORTANT:** Don't hit the step pad by any metal hammer within step pad installation, or the step pad will be damaged.

(8) M6X1-20mm T-Bolts  
(8) M6 Large Flat Washers  
(8) M6 Nylon Lock Nuts



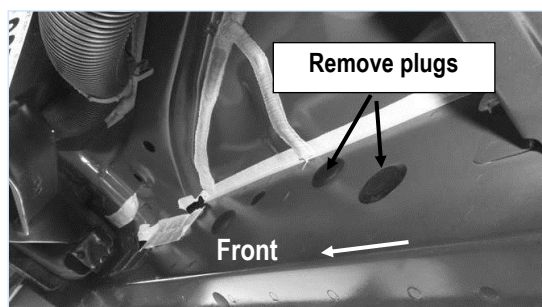
(2) M6X1-20mm Flat Sunk Head Bolts

Customer Support: [info@iarmorauto.com](mailto:info@iarmorauto.com)

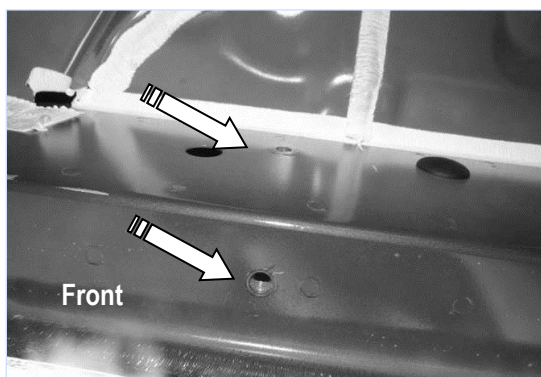
# iArmor®

## STEP 2

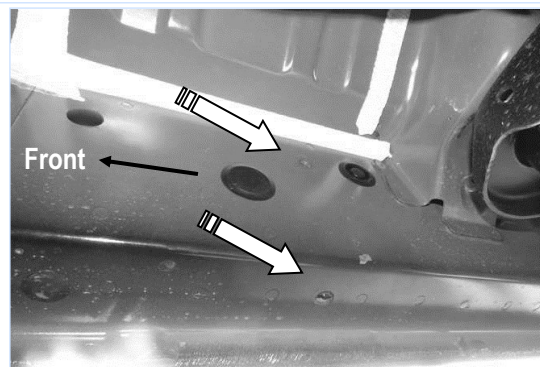
Start the installation under the passenger side of the vehicle. Locate the 6 plugs along the bottom edge of the body. Mounting Brackets will bolt to the 1st, 3rd and 6th threaded mounting holes, (**Fig 1-4**). Remove the plastic plugs from each mounting location. Directly above each threaded insert is a top mounting location on the side of the body panel. Hold a Bracket up in place to help determine the mounting holes to use along the body. **NOTE:** Thread an 8mm Hex Bolt into the threaded inserts to clear paint as required.



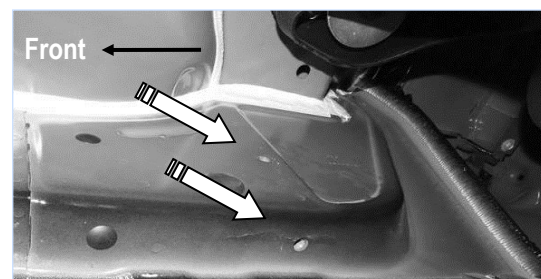
(Fig 1) Remove Plastic Plugs to Uncover Threaded Inserts



(Fig 2) Passenger Front Mounting Location



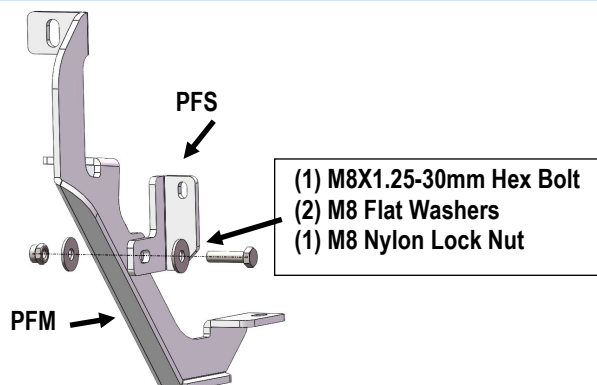
(Fig 3) Passenger 2nd Mounting Location



(Fig 4) Passenger Rear Mounting Location

## STEP 3

Assemble Passenger Front Mounting Bracket (**PFM**) and Passenger Front Support Bracket (**PFS**) with (1) M8X1.25-30mm Hex Bolt, (2) M8 Flat Washers and (1) M8 Nylon Lock Nut (**Fig 5**).

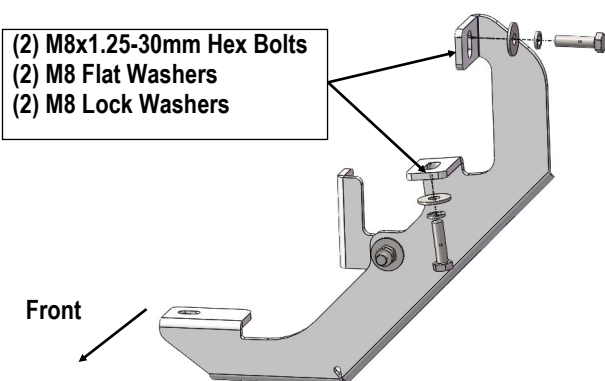


(Fig 5) Passenger Front Mounting Bracket Assembly

# iArmor®

## STEP 4

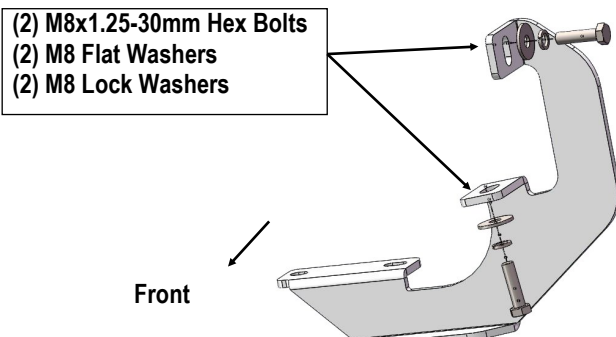
Attach the Assembled Passenger Front Mounting Bracket to the factory threaded holes with (2) M8 X1.25-30mm Hex Bolts, (2) M8 Lock Washers and (2) M8 Flat Washers (**Fig 6**). Do not tighten hardware at this time.



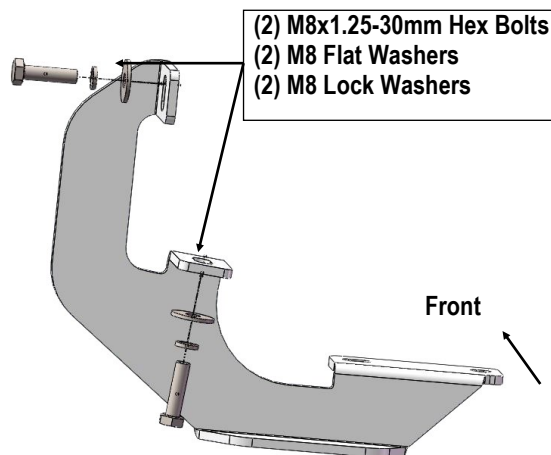
(Fig 6) Passenger Front Mounting Bracket Installed

## STEP 5

Repeat **Steps 3 & 4** to install Passenger Center Mounting Bracket (**PCM/DRM**) and Passenger Rear Mounting Bracket (**DCM/PRM**) on the remaining mounting locations along the body panel, (**Fig 7-8**).



(Fig 7) Passenger Center Mounting Bracket Installed



(Fig 8) Passenger Rear Mounting Bracket Installed

## STEP 6

Once (3) passenger side brackets are installed, attach the Assembled Passenger Side Step Bar onto the Mounting Brackets with (4) M6X1-20mm T-Bolts, (2) M6X1-20mm Square Head Bolts, (6) M6 Large Flat Washers and (6) M6 Nylon Lock Nuts, (**Fig 9**). Do not tighten hardware.

## STEP 7

Level and adjust the Assembled Step Bar properly and tighten all hardware.  
Repeat **Steps 2-6** for the Driver Side Step Bar installation.

# iArmor®

## STEP 8

Installation completed!!!

## STEP 9

Do periodic inspections to the installation to make sure that all hardware is secure and tight.

### Attention

In order to protect your bars/boards, please use only mild soap/non-abrasive products for cleaning.

