

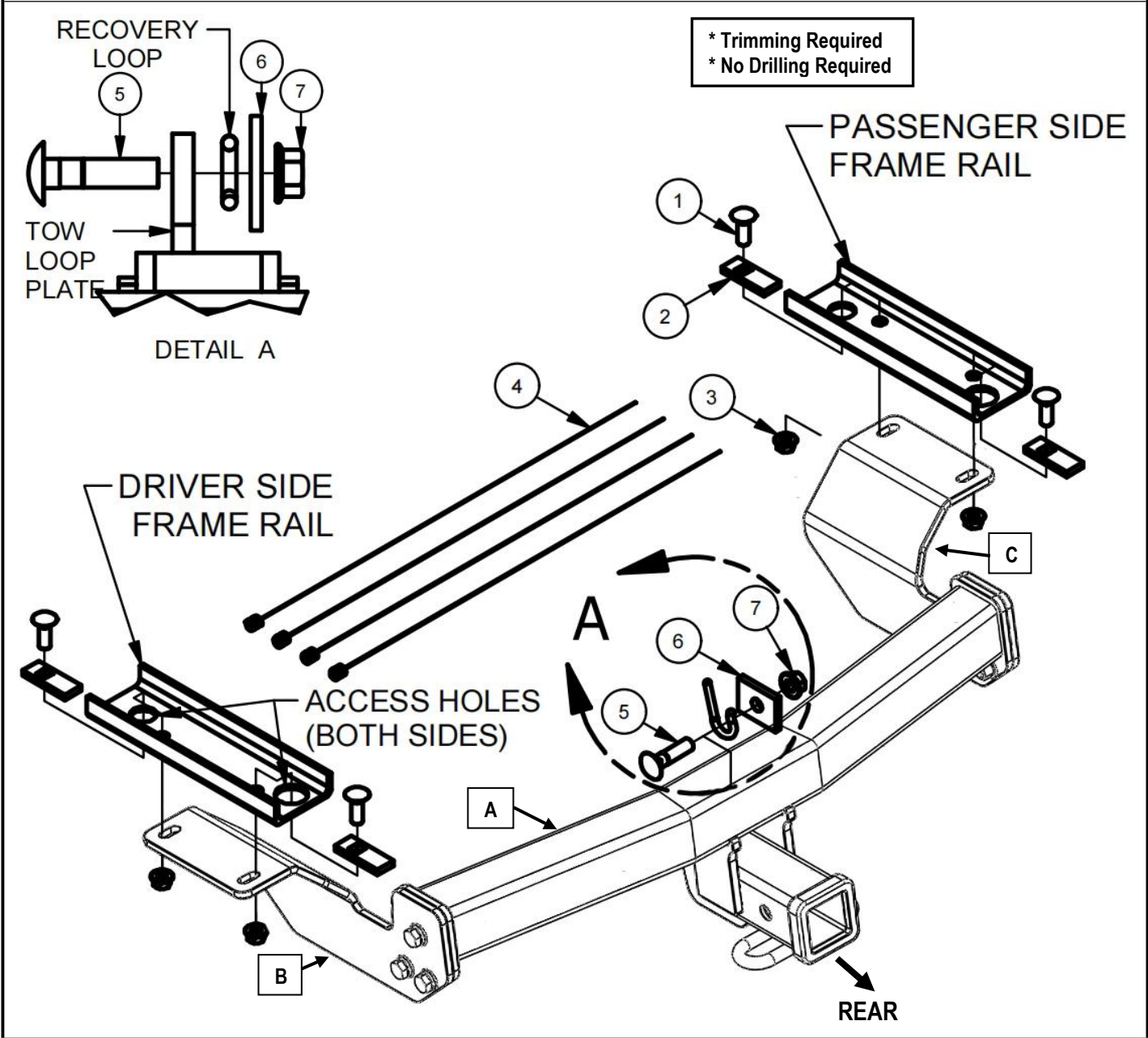


Hitch Installation Instruction

REV.20240901

Part#	HT-X30397	Application	For 2017-2024 Honda CR-V						
Hardware List		Item	Part Name	QTY	Description	Item	Part Name	QTY	Description
Hitch Parts		A	Hitch Body	1		B/C	Mounting Brackets	2	B-Driver Side C-Passenger Side
HW B (For Hitch Installation)		1#	Carriage Bolts	4	M10X1.5-35	5#	Carriage Bolts	1	M12X1.75-50
		2#	Spacers	4	With SQ Hole	6#	Spacers	1	With Round Hole
		3#	Hex Flange Nuts	4	M10X1.5	7#	Hex Flange Nuts	1	M12X1.75
		4#	Fishwires	4					
HW A (For Hitch Assembly)		8#	Hex Bolts	6	M12X1.75-35	10#	Lock Washers	6	M12
		9#	Flat Washers	10	M12	11#	Hex Nuts	4	M12X1.75

Gross Load Capacity When Used As A Weight Carrying Hitch: 3500 LBS. Trailer Weight & 525 LBS. Tongue Weight.
DO NOT EXCEED VEHICLE MANUFACTURER'S RECOMMENDED TOWING CAPACITY.



The instruction here is for your reference only. We strongly recommend the professional installer for best result.
We are not responsible for any damage caused by the installation. Thank you for choosing our product!

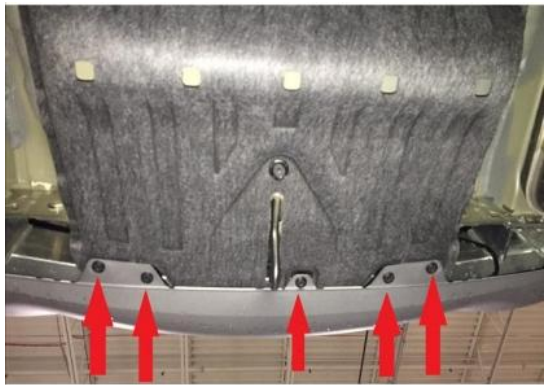


Hitch Installation Instruction

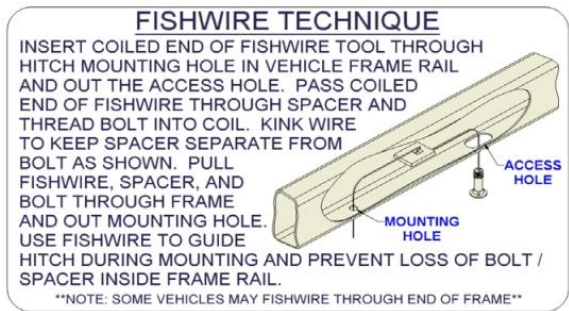
REV.20240901

Part#	HT-X30397	Application	For 2017-2024 Honda CR-V
-------	-----------	-------------	--------------------------

Step	Description
1	Assemble Hitch Body (A) and Mounting Brackets (B, C) with (6) M12X1.75-35mm Hex Bolts, (10) M12 Flat Washers, (6) M12 Lock Washers, (4) M12 Hex Nuts.(Hardware in “HW A”).
2	Lower exhaust by removing (3) rubber isolators from the exhaust towards the rear of the vehicle. Remove (5) fasteners from lower fascia.

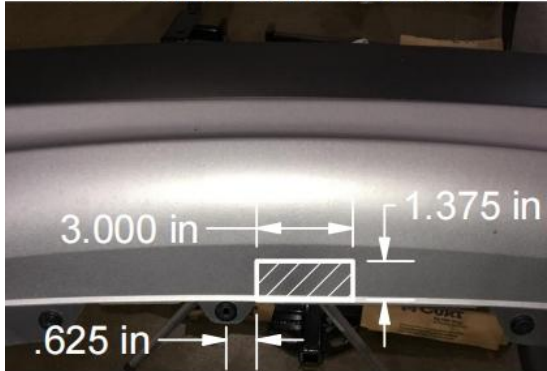


3	Fishwire (2) M10X1.5-35 carriage bolts and (2) SQ Hole spacers through the vehicle access holes to the attachment holes on each side. See FISHWIRE DIAGRAM below.
---	---

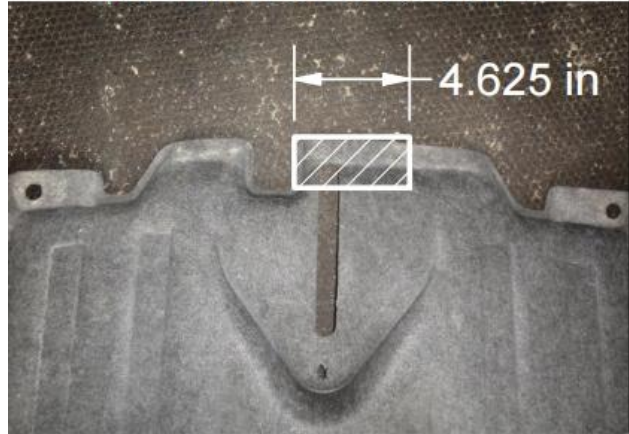


4	Trim lower fascia as shown in FASCIA TRIM DIAGRAM below. CAUTION: Be aware of electrical components when trimming. NOTE: Trimming of underbody panel may ease installation.
---	---

FASCIA TRIM DIAGRAM



UNDERBODY PANEL






TRIM DIAGRAM

The instruction here is for your reference only. We strongly recommend the professional installer for best result. We are not responsible for any damage caused by the installation. Thank you for choosing our product!



Hitch Installation Instruction

REV.20240901

Part#	HT-X30397	Application	For 2017-2024 Honda CR-V
5	Raise hitch into position feeding the fishwires through the holes in the hitch. Once hitch is in place, remove the fishwires and loosely secure (2) M10 hex flange nuts on each side. Secure Tow Loop Plate to recovery loop using (1) M12X1.75-50 bolt, (1) Round Hole Spacer and (1) M12 hex flange nut.		
	<div></div>		
6	Torque all M10 hardware to 32 ft-lbs and all M12 hardware to 58 ft-lbs. Reinstall items removed in Step 1.		
			
<p>***Periodically Check The Receiver Hitch To Ensure That All Fasteners *** Are Tight & All Structural Components Are Sound.</p>			

The instruction here is for your reference only. We strongly recommend the professional installer for best result. We are not responsible for any damage caused by the installation. Thank you for choosing our product!