



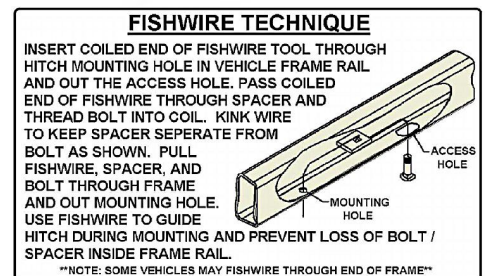
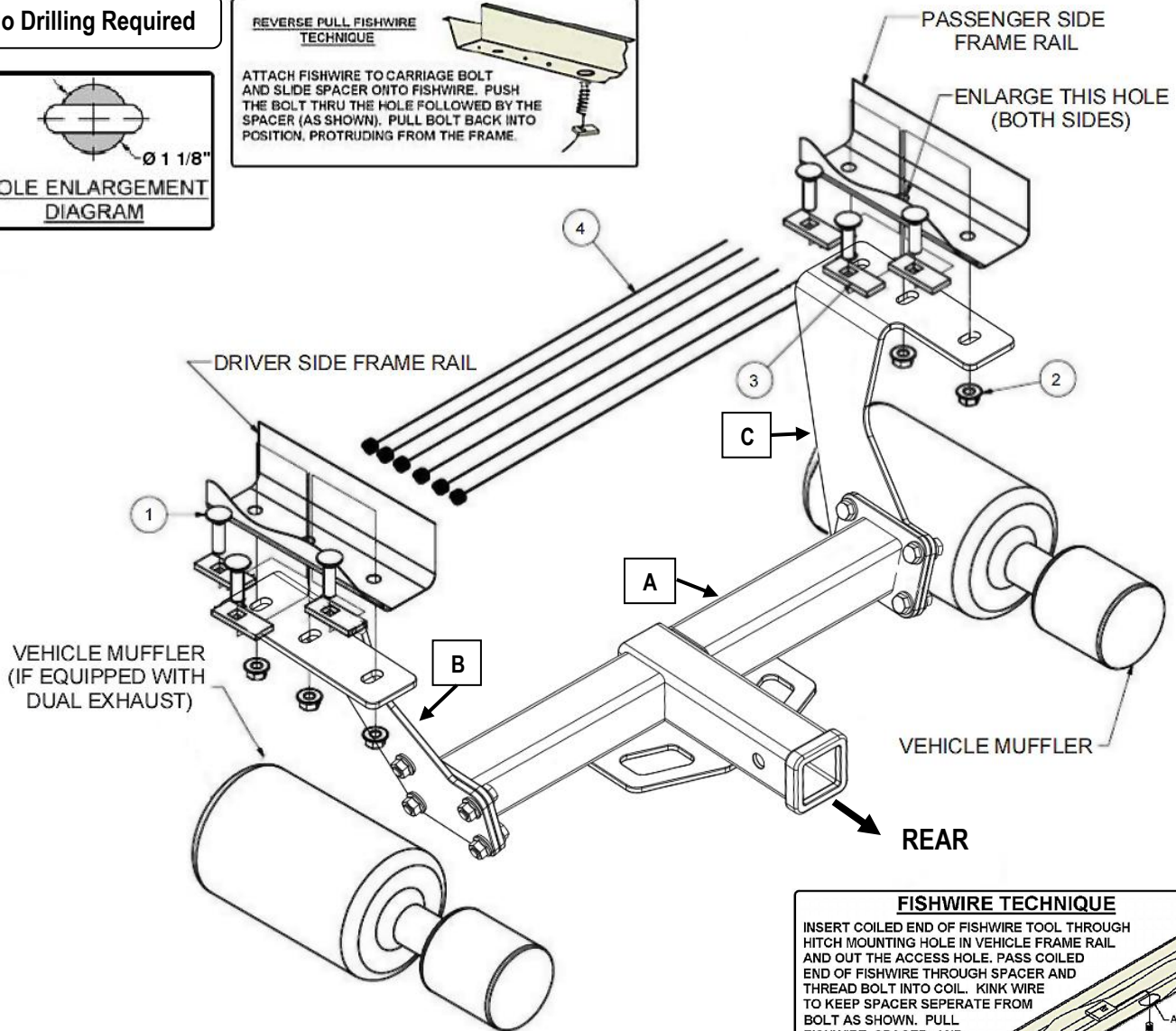
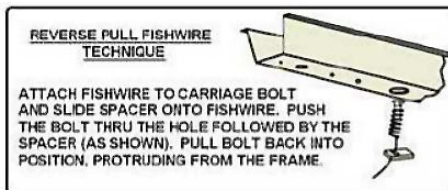
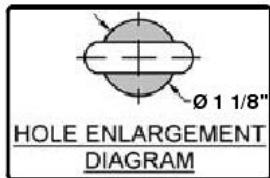
Hitch Installation Instruction

REV.20240601

Part#	HT-X30144	Application	For 2014-2018 Subaru Forester					
Hardware List	Item	Part Name	QTY	Description	Item	Part Name	QTY	Description
Hitch Parts	A	Hitch Body	1		B/C	Mounting Brackets	2	B-Driver Side C-Passenger Side
HW B (For Hitch Installation)	1#	Carriage Bolts	6	M12X1.75-45	3#	Spacers	6	With SQ Hole
	2#	Hex Flange Nuts	6	M12X1.75	4#	Fish Wires	6	
HW A (For Hitch Assembly)	5#	Hex Bolts	8	M12X1.75-35	7#	Hex Flange Nuts	8	M12
	6#	Flat Washers	16	M12				

Gross Load Capacity When Used As A Weight Carrying Hitch:3500 LBS. Trailer Weight & 525 LBS. Tongue Weight.
***DO NOT EXCEED VEHICLE MANUFACTURER'S RECOMMENDED TOWING CAPACITY. ***

No Drilling Required






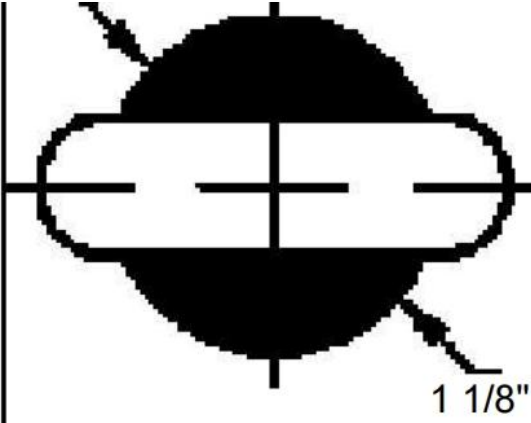


The instruction here is for your reference only. We strongly recommend the professional installer for best result. We are not responsible for any damage caused by the installation. Thank you for choosing our product!



Hitch Installation Instruction

REV.20240601

Part#	HT-X30144	Application	For 2014-2018 Subaru Forester
Step	Description		
1	Assemble Hitch Body (A) and Mounting Brackets (B, C) with (8) M12X1.75-35mm Hex Bolts, (16) M12 Flat Washers, (8) M12 Hex Flange Nuts.(Hardware in "HW A").		
2	Remove (2) exhaust hangers from the passenger side muffler and (1) exhaust from the center front of vehicle for single exhaust vehicles, dual exhaust will remove (2) exhaust hangers from the driver side muffler as well. Support lowered exhaust with jack stand.		
			
3	Remove (4) heat shield attachments with Phillips head screwdriver or 10mm socket (both sides if equipped with dual exhaust). Remove three hole plugs from each side of frame to expose mounting holes. Return all removed items to customer.		
			
4	Enlarge the center hole on each side of the frame to about 1 1/8" to allow the mounting hardware to pass through. (Both sides)		
			

The instruction here is for your reference only. We strongly recommend the professional installer for best result. We are not responsible for any damage caused by the installation. Thank you for choosing our product!



Hitch Installation Instruction

REV.20240601

Part#	HT-X30144	Application	For 2014-2018 Subaru Forester
5	Fishwire M12 carriage bolt and spacer through the front and rear frame holes in both frame sides then reverse fishwire the center hole both sides.		
			
6	Raise hitch into place and secure hitch to frame, using the M12 hardware provided. Torque M12 fasteners to 58 ft-lbs.		
			
7	Raise exhaust back into place and reattach exhaust hangers. Install complete.		
			
***Periodically Check The Receiver Hitch To Ensure That All Fasteners *** Are Tight & All Structural Components Are Sound.			

The instruction here is for your reference only. We strongly recommend the professional installer for best result. We are not responsible for any damage caused by the installation. Thank you for choosing our product!