



Hitch Installation Instruction

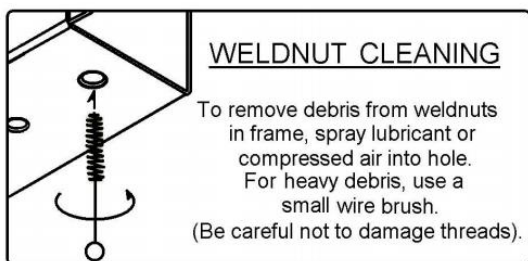
REV.20240701

Part#	HT-X36300	Application	For 2008-2012 Jeep Liberty					
-------	-----------	-------------	----------------------------	--	--	--	--	--

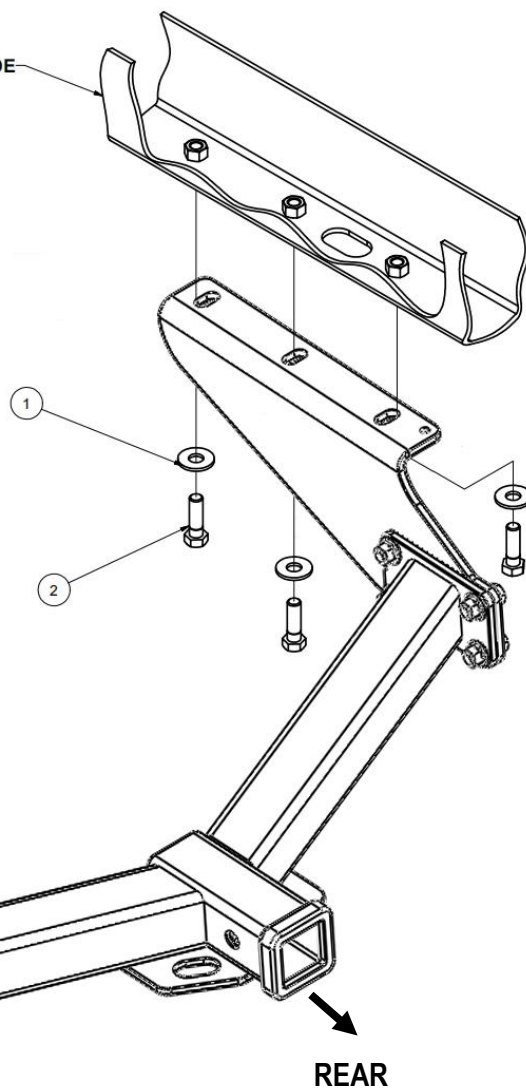
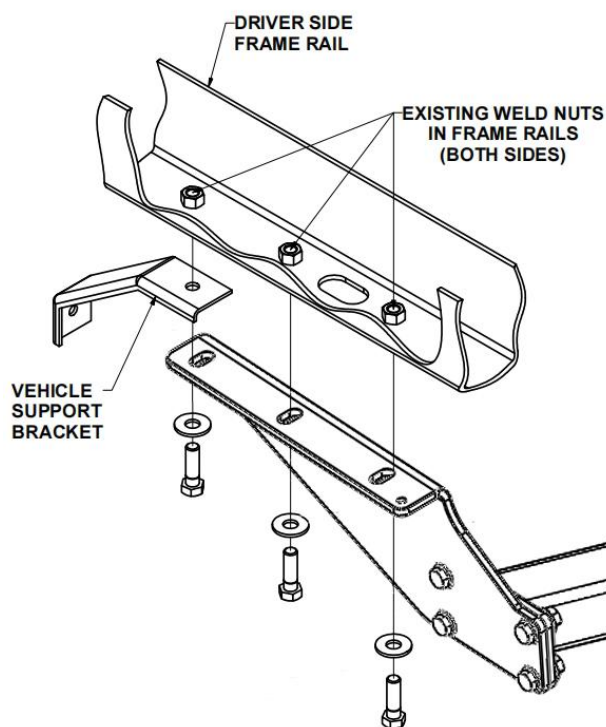
Hardware List	Item	Part Name	QTY	Description	Item	Part Name	QTY	Description
Hitch Parts	A	Hitch Body	1		B/C	Mounting Brackets	2	B-Driver Side C-Passenger Side
HW B (For Hitch Installation)	1#	Conical Washers	6	M12	2#	Hex Bolts	6	M12X1.75-40
HW A (For Hitch Assembly)	3#	Hex Bolts	8	M12X1.75-35	5#	Hex Flange Nuts	8	M12
	4#	Flat Washers	16	M12				

Gross Load Capacity When Used As A Weight Carrying Hitch: 5000 LBS. Trailer Weight & 500 LBS. Tongue Weight.
Gross Load Capacity When Used As A Weight Distribution Hitch: 7500 LBS. Trailer Weight & 750 LBS. Tongue Weight
DO NOT EXCEED VEHICLE MANUFACTURER'S RECOMMENDED TOWING CAPACITY.

- * No Trimming Required
- * No Drilling Required



PASSENGER SIDE
FRAME RAIL









The instruction here is for your reference only. We strongly recommend the professional installer for best result. We are not responsible for any damage caused by the installation. Thank you for choosing our product!



Hitch Installation Instruction

Part#	HT-X36300	Application	For 2008-2012 Jeep Liberty
-------	-----------	-------------	----------------------------

Step	Description
1	Assemble Hitch Body (A) and Mounting Brackets (B, C) with (8) M12X1.75-35mm Hex Bolts, (16) M12 Flat Washers, (8) M12 Hex Flange Nuts.(Hardware in "HW A").
2	Remove bolt from driver's side vehicle support bracket and return to vehicle owner.
3	Remove bolt from driver's side vehicle support bracket and return to vehicle owner.
 	
4	Raise hitch into position.
5	Position hitch over frame and support bracket (driver side) and loosely install the supplied fasteners as shown.
 	
6	Torque all M12 fasteners to 86 lb-ft.
 	
7	Installation complete.
***Periodically Check The Receiver Hitch To Ensure That All Fasteners *** Are Tight & All Structural Components Are Sound.	

The instruction here is for your reference only. We strongly recommend the professional installer for best result. We are not responsible for any damage caused by the installation. Thank you for choosing our product!