



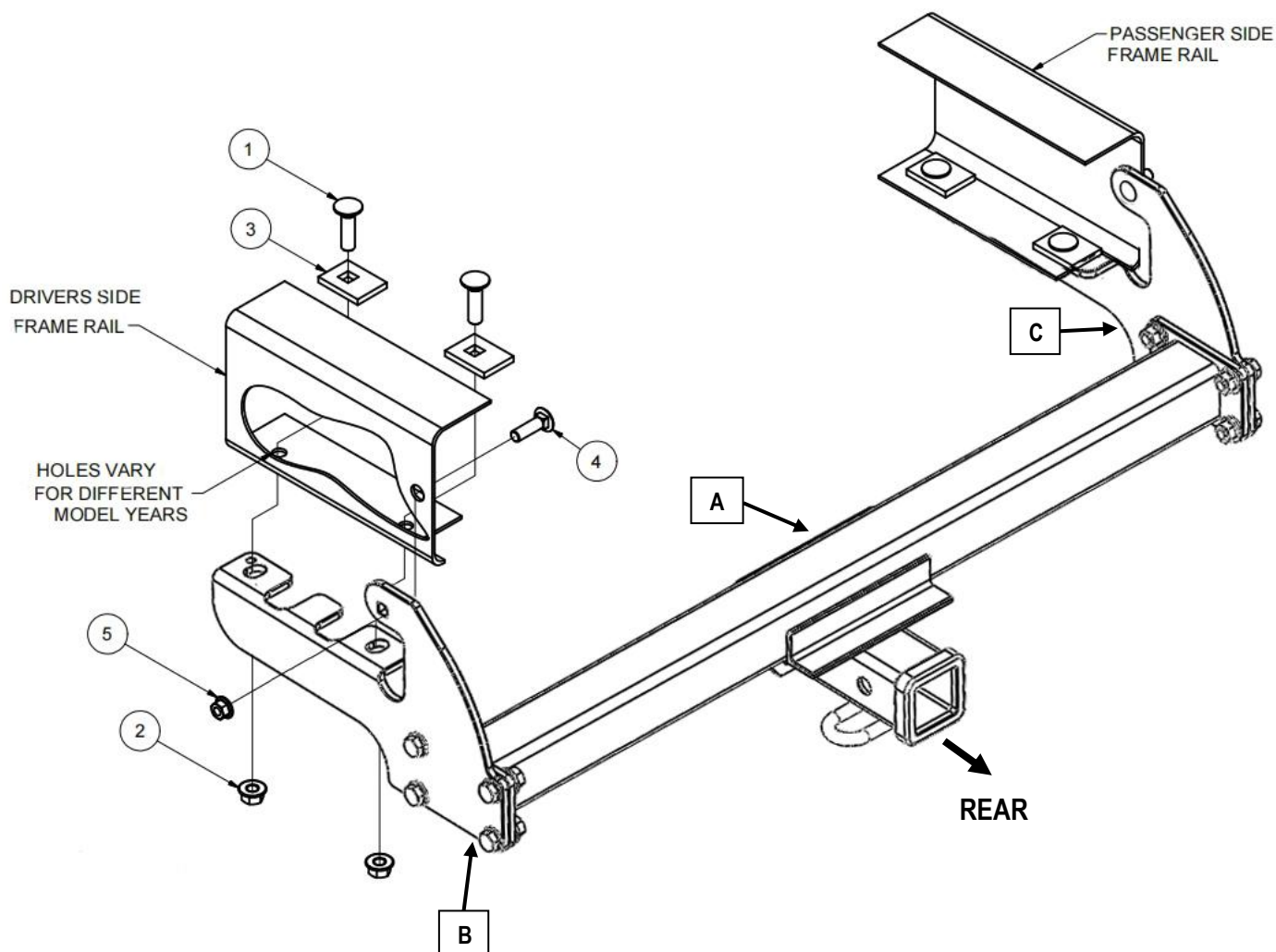
Hitch Installation Instruction

REV.20240701

Part#	HT-X33085	Application	For 1987-2004 Dodge Dakota					
Hardware List	Item	Part Name	QTY	Description	Item	Part Name	QTY	Description
Hitch Parts	A	Hitch Body	1		B/C	Mounting Brackets	2	B-Driver Side C-Passenger Side
HW B (For Hitch Installation)	1#	Carriage Bolts	4	M12X1.75-45	4#	Carriage Bolts	2	M10X1.5-40
	2#	Hex Flange Nuts	4	M12X1.75	5#	Hex Flange Nuts	2	M10X1.5
	3#	Spacers	4	With SQ Hole				
HW A (For Hitch Assembly)	6#	Hex Bolts	8	M12X1.75-35	8#	Hex Flange Nuts	8	M12
	7#	Flat Washers	16	M12				

Gross Load Capacity When Used As A Weight Carrying Hitch: 5000 LBS. Trailer Weight & 500 LBS. Tongue Weight.
Gross Load Capacity When Used As A Weight Distribution Hitch: 8000 LBS. Trailer Weight & 800 LBS. Tongue Weight.
DO NOT EXCEED VEHICLE MANUFACTURER'S RECOMMENDED TOWING CAPACITY.

- * Drilling Required
- * No Trimming Required



The instruction here is for your reference only. We strongly recommend the professional installer for best result.
We are not responsible for any damage caused by the installation. Thank you for choosing our product!



Hitch Installation Instruction

Part#	HT-X33085	Application	For 1987-2004 Dodge Dakota
-------	-----------	-------------	----------------------------

Step	Description
1	Assemble Hitch Body (A) and Mounting Brackets (B, C) with (8) M12X1.75-35mm Hex Bolts, (16) M12 Flat Washers, (8) M12 Hex Flange Nuts.(Hardware in "HW A").
2	Remove rearmost bolt at the end of the frame on both sides. NOTE: The two rearmost bolts on some models are connected with a plate. Remove and cut the plate midway between the bolts. Discard the rearmost and reinstall the other.
3	Position the hitch on the vehicle and install M10 fasteners.
4	95 and earlier: Using the side bracket of the receiver as a template, drill two holes into bottom of frame rail with a 1/2" bit. Repeat on other side. 96 models: Using the side bracket of the receiver as a template, drill forward attachment hole into bottom of frame rail with a 1/2" bit. Repeat of other side. 97 models and later: align hitch with existing holes.
5	Install remaining M12 fasteners as shown. Note: Exhaust hanger may need to be repositioned.
6	Torque all M12 fasteners to 58 lb.-ft..Torque M10 to 32 lb-ft.
***Periodically Check The Receiver Hitch To Ensure That All Fasteners *** Are Tight & All Structural Components Are Sound.	

The instruction here is for your reference only. We strongly recommend the professional installer for best result.
We are not responsible for any damage caused by the installation. Thank you for choosing our product!