



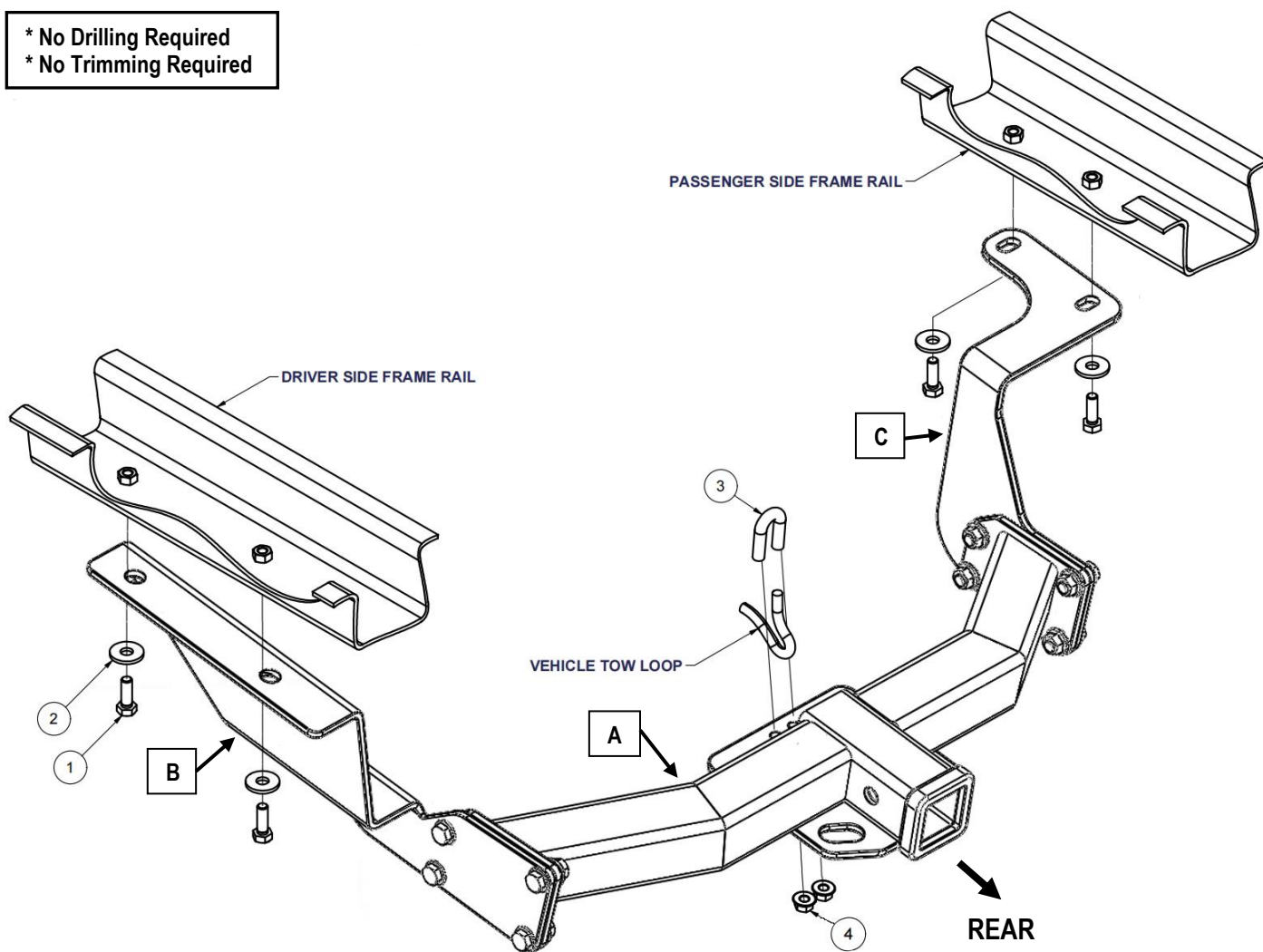
Hitch Installation Instruction

Part#	HT-X32610	Application	For 2007-2011 Honda CR-V					
Hardware List	Item	Part Name	QTY	Description	Item	Part Name	QTY	Description
Hitch Parts	A	Hitch Body	1		B/C	Mounting Brackets	2	B-Driver Side C-Passenger Side
HW B (For Hitch Installation)	1#	Hex Bolts	4	M10X1.25-30	3#	U-Bolt	1	M10X1.5-60
	2#	Conical Washers	4	M10	4#	Hex Flange Nuts	2	M10X1.5
HW A (For Hitch Assembly)	5#	Hex Bolts	8	M12X1.75-35	7#	Hex Flange Nuts	8	M12
	6#	Flat Washers	16	M12				

Gross Load Capacity When Used As A Weight Carrying Hitch: 3500 LBS. Trailer Weight & 350 LBS. Tongue Weight.

*****DO NOT EXCEED VEHICLE MANUFACTURER'S RECOMMENDED TOWING CAPACITY.*****

- * No Drilling Required
- * No Trimming Required



WELDNUT CLEANING

To remove debris from weldnuts in frame, spray lubricant or compressed air into hole. For heavy debris, use a small wire brush. (Be careful not to damage threads).

The instruction here is for your reference only. We strongly recommend the professional installer for best result. We are not responsible for any damage caused by the installation. Thank you for choosing our product!



Hitch Installation Instruction

Part#	HT-X32610	Application	For 2007-2011 Honda CR-V
-------	-----------	-------------	--------------------------

Step	Description
1	Assemble Hitch Body (A) and Mounting Brackets (B, C) with (8) M12X1.75-35mm Hex Bolts, (16) M12 Flat Washers, (8) M12 Hex Flange Nuts.(Hardware in "HW A").
2	Lower exhaust, (2) hangers above muffler.
3	Place u-bolt into position through tow loop. Raise hitch into position, and install flange nuts onto u-bolt.
4	Install remaining fasteners as shown above.
5	Torque M10 Hex Bolts to 47 lb-ft. Torque M10 U-Bolt to 32 lb-ft.
6	Re-install exhaust hangers.
***Periodically Check The Receiver Hitch To Ensure That All Fasteners *** Are Tight & All Structural Components Are Sound.	

The instruction here is for your reference only. We strongly recommend the professional installer for best result. We are not responsible for any damage caused by the installation. Thank you for choosing our product!