



## Hitch Installation Instruction

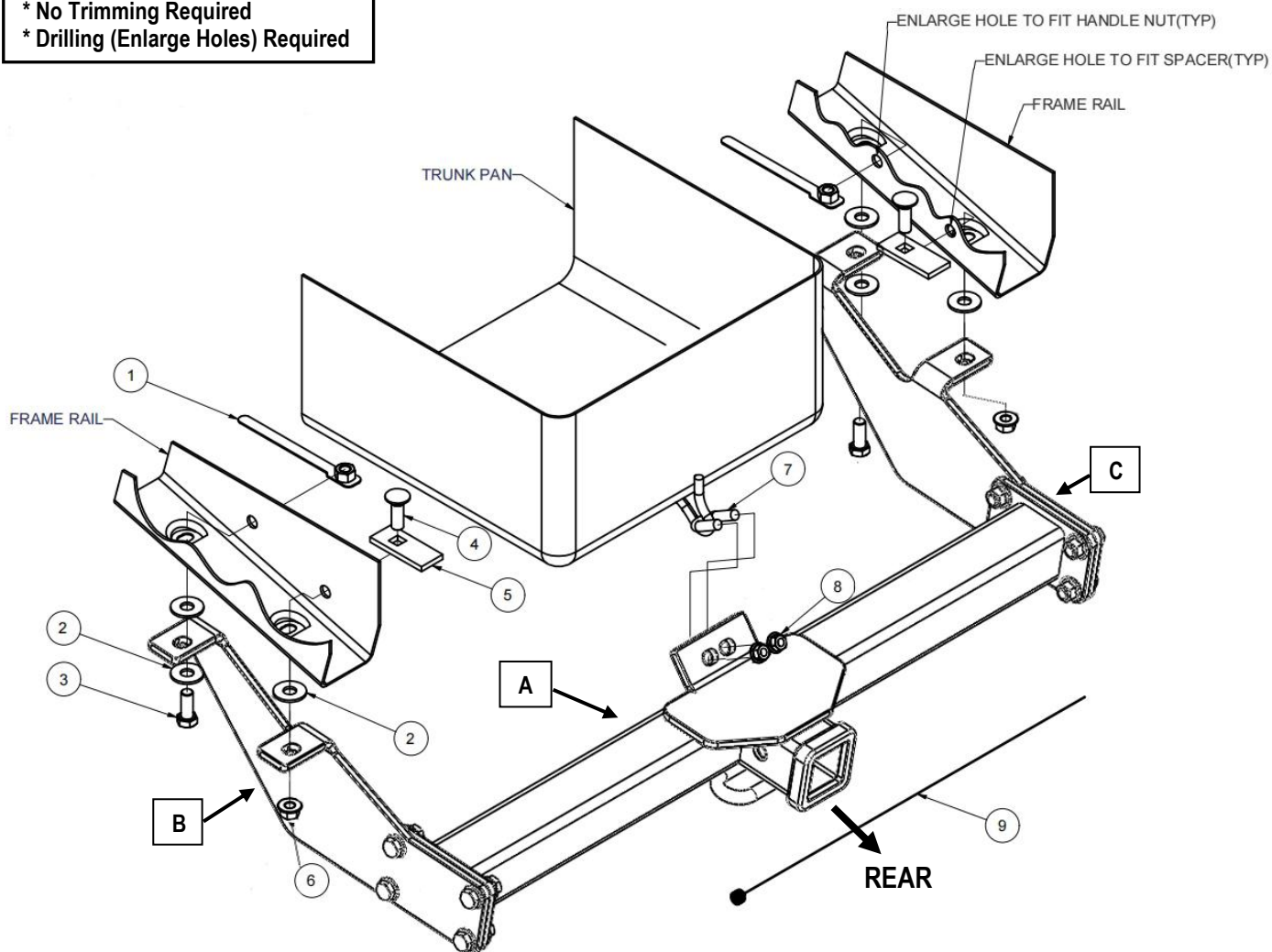
REV.20241201

Part#	HT-X31531	Application	For 2003-2011 Honda Element (Excluding SC)
-------	-----------	-------------	--

Hardware List	Item	Part Name	QTY	Description	Item	Part Name	QTY	Description
Hitch Parts	A	Hitch Body	1		B/C	Mounting Brackets	2	B-Driver Side C-Passenger Side
HW B (For Hitch Installation)	1#	Handle Nut	2	M12X1.75	6#	Hex Flange Nuts	2	M12X1.75
	2#	Washers	6	M12	7#	U-Bolt	1	M10X1.5-52
	3#	Hex Bolts	2	M12X1.75-35	8#	Hex Flange Nuts	2	M10X1.5
	4#	Carriage Bolts	2	M12X1.75-40	9#	Fishwire	1	
	5#	Spacers	2	With SQ Hole				
HW A (For Hitch Assembly)	10#	Hex Bolts	8	M12X1.75-35	12#	Hex Flange Nuts	8	M12
	11#	Flat Washers	16	M12				

Gross Load Capacity When Used As A Weight Carrying Hitch: 3500 LBS. Trailer Weight & 350 LBS. Tongue Weight.  
\*\*\*DO NOT EXCEED VEHICLE MANUFACTURER'S RECOMMENDED TOWING CAPACITY.\*\*\*

- \* No Trimming Required
- \* Drilling (Enlarge Holes) Required



The instruction here is for your reference only. We strongly recommend the professional installer for best result. We are not responsible for any damage caused by the installation. Thank you for choosing our product!



## Hitch Installation Instruction

Part#	HT-X31531	Application	For 2003-2011 Honda Element (Excluding SC)
-------	-----------	-------------	--

Step	Description
1	Assemble Hitch Body (A) and Mounting Brackets (B, C) with (8) M12X1.75-35mm Hex Bolts, (16) M12 Flat Washers, (8) M12 Hex Flange Nuts.(Hardware in "HW A").
2	Enlarge holes in frame rails as shown.
3	Insert handle nut into hole as shown. Bending is required, handle end will stick out of existing frame rail hole.
4	Fishwire spacer through existing frame rail hole as shown.
5	Raise hitch into position and align holes.
6	Secure hitch to frame with remaining hardware.
7	Torque M10 hardware to 32 lb-ft. and M12 Carriage Bolt to 58 lb-ft, other M12 fasteners to 86 lb-ft.
<b>***Periodically Check The Receiver Hitch To Ensure That All Fasteners *** Are Tight &amp; All Structural Components Are Sound.</b>	

The instruction here is for your reference only. We strongly recommend the professional installer for best result. We are not responsible for any damage caused by the installation. Thank you for choosing our product!