



Hitch Installation Instruction

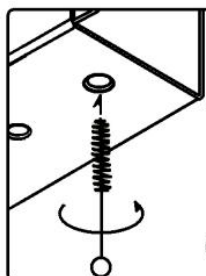
REV.20240801

Part#	HT-X31406	Application	For 2004-2007 Nissan TITAN (XE/LE/SE) \2008-2015 Nissan TITAN (PRO-4X/SV/SL/S)					
-------	-----------	-------------	--------------------------------------------------------------------------------	--	--	--	--	--

Hardware List	Item	Part Name	QTY	Description	Item	Part Name	QTY	Description
Hitch Parts	A	Hitch Body	1		B/C	Mounting Brackets	2	B-Driver Side C-Passenger Side
HW B (For Hitch Installation)	1#	Conical Washers	6	M12	2#	Hex Bolts	6	M12X1.25-40
HW A (For Hitch Assembly)	3#	Hex Bolts	8	M12X1.75-35	5#	Hex Flange Nuts	8	M12
	4#	Flat Washers	16	M12				

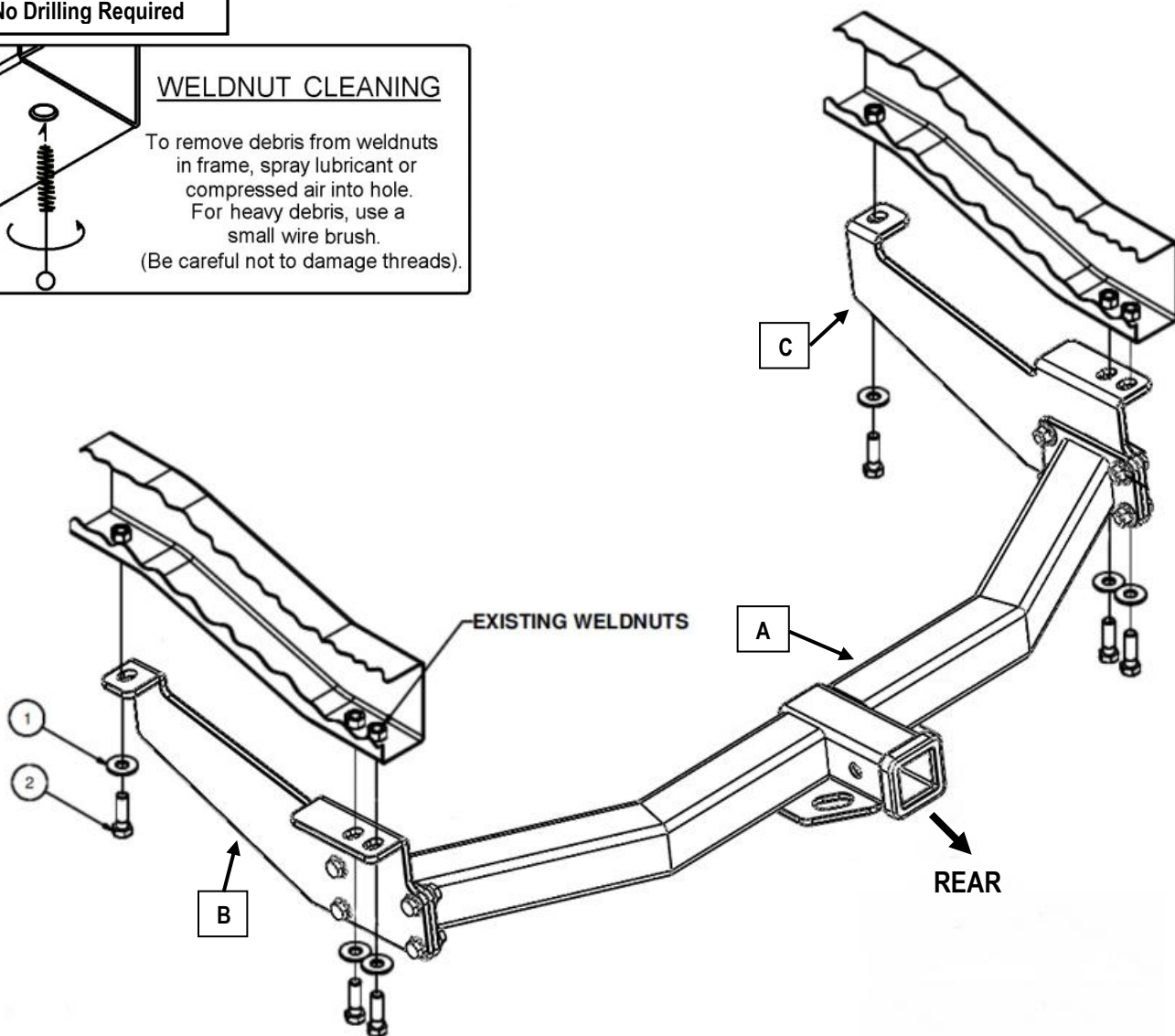
Gross Load Capacity When Used As A Weight Carrying Hitch: 6000 LBS. Trailer Weight & 600 LBS. Tongue Weight.
Gross Load Capacity When Used As A Weight Distribution Hitch: 10000 LBS. Trailer Weight & 1000 LBS. Tongue Weight.
DO NOT EXCEED VEHICLE MANUFACTURER'S RECOMMENDED TOWING CAPACITY.

- * No Trimming Required
- * No Drilling Required



WELDNUT CLEANING

To remove debris from weldnuts in frame, spray lubricant or compressed air into hole.
For heavy debris, use a small wire brush.
(Be careful not to damage threads).



The instruction here is for your reference only. We strongly recommend the professional installer for best result. We are not responsible for any damage caused by the installation. Thank you for choosing our product!



Hitch Installation Instruction

Part#	HT-X31406	Application	For 2004-2007 Nissan TITAN (XE/LE/SE) \2008-2015 Nissan TITAN (PRO-4X/SV/SL/S)
-------	-----------	-------------	--------------------------------------------------------------------------------

Step	Description
1	Assemble Hitch Body (A) and Mounting Brackets (B, C) with (8) M12X1.75-35mm Hex Bolts, (16) M12 Flat Washers, (8) M12 Hex Flange Nuts.(Hardware in "HW A").
2	Before installing hitch remove tow hooks, if present on vehicle.
3	Raise hitch into position. Fasten hitch as shown by threading hex bolts and conical washers into existing weld nuts.
4	Torque M12 fasteners to 86 lb.-ft.
***Periodically Check The Receiver Hitch To Ensure That All Fasteners *** Are Tight & All Structural Components Are Sound.	

The instruction here is for your reference only. We strongly recommend the professional installer for best result. We are not responsible for any damage caused by the installation. Thank you for choosing our product!