



Hitch Installation Instruction

REV.20240801

Part#	HT-X31341	Application	For 1997-2006 Jeep Wrangler
-------	-----------	-------------	-----------------------------

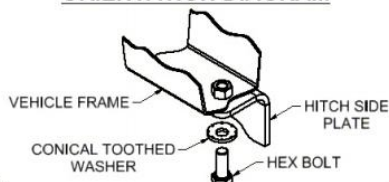
Hardware List	Item	Part Name	QTY	Description	Item	Part Name	QTY	Description
Hitch Parts	A	Hitch Body	1		B/C	Mounting Brackets	2	B-Driver Side C-Passenger Side
HW B (For Hitch Installation)	1#	Hex Flange Nuts	2	M12X1.75	5#	Conical Washers	2	M12
	2#	Hex Bolts	2	7/16-14X1¼	6#	Carriage Bolts	2	M12X1.75-45
	3#	Hex Bolts	2	M12X1.75-50	7#	Fishwire	1	
	4#	Spacers	2	With SQ Hole				
HW A (For Hitch Assembly)	8#	Hex Bolts	8	M12X1.75-35	10#	Hex Flange Nuts	8	M12
	9#	Flat Washers	16	M12				

Gross Load Capacity When Used As A Weight Carrying Hitch: 4000 LBS. Trailer Weight & 400 LBS. Tongue Weight.

DO NOT EXCEED VEHICLE MANUFACTURER'S RECOMMENDED TOWING CAPACITY.

- * No Drilling Required
- * No Trimming Required

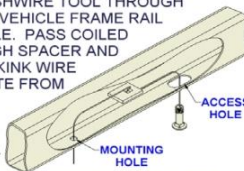
CONICAL TOOTHED WASHER ORIENTATION DIAGRAM



FISHWIRE TECHNIQUE

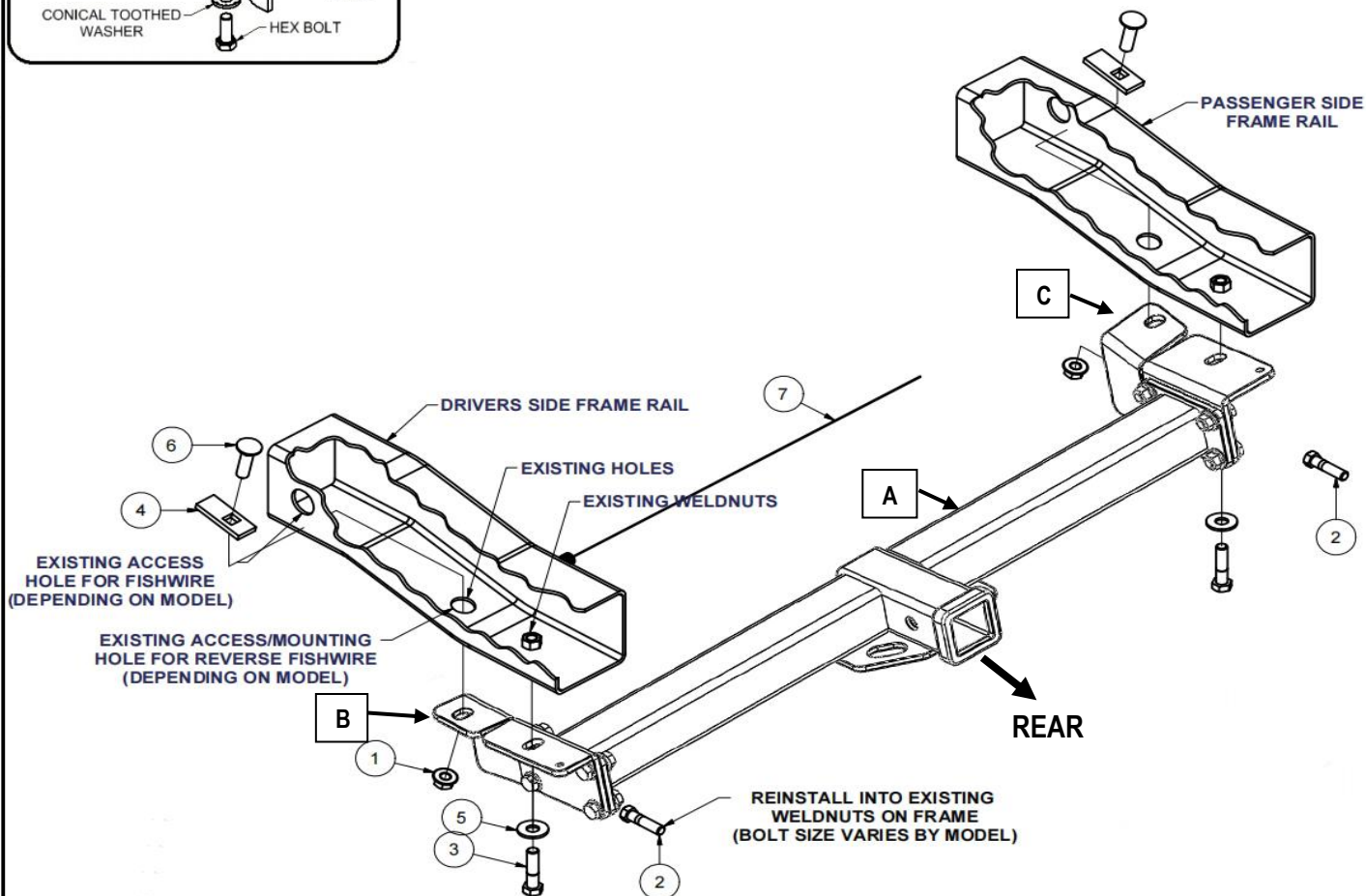
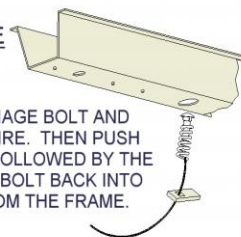
INSERT COILED END OF FISHWIRE TOOL THROUGH HITCH MOUNTING HOLE IN VEHICLE FRAME RAIL AND OUT THE ACCESS HOLE. PASS COILED END OF FISHWIRE THROUGH SPACER AND THREAD BOLT INTO COIL. KINK WIRE TO KEEP SPACER SEPARATE FROM BOLT AS SHOWN. PULL FISHWIRE, SPACER, AND BOLT THROUGH FRAME AND OUT MOUNTING HOLE. USE FISHWIRE TO GUIDE HITCH DURING MOUNTING AND PREVENT LOSS OF BOLT / SPACER INSIDE FRAME RAIL.

***NOTE: SOME VEHICLES MAY FISHWIRE THROUGH END OF FRAME**



REVERSE PULL FISHWIRE TECHNIQUE

ATTACH FISHWIRE TO CARRIAGE BOLT AND SLIDE SPACER ONTO FISHWIRE. THEN PUSH THE BOLT THRU THE HOLE FOLLOWED BY THE SPACER (AS SHOWN). PULL BOLT BACK INTO POSITION, PROTRUDING FROM THE FRAME.



The instruction here is for your reference only. We strongly recommend the professional installer for best result. We are not responsible for any damage caused by the installation. Thank you for choosing our product!



Hitch Installation Instruction

Part#	HT-X31341	Application	For 1997-2006 Jeep Wrangler
-------	-----------	-------------	-----------------------------

Step	Description
1	Assemble Hitch Body (A) and Mounting Brackets (B, C) with (8) M12X1.75-35mm Hex Bolts, (16) M12 Flat Washers, (8) M12 Hex Flange Nuts.(Hardware in "HW A").
2	Remove existing bolt from rear most hole in the vehicle frame. Note: These bolts hold bumper in place.
3	Fishwire or reverse fishwire the M12 carriage bolts and spacers through access holes and out existing holes in bottom of frame. See Fishwire or Reverse Fishwire Technique. Note: Access hole locations vary by vehicle.
4	Install remaining fasteners into existing weldnuts, as shown. Note: Use of the M12 or 7/16" bolts vary by vehicle.
5	Torque 7/16" Hex Bolt to 70 ft-lbs. Torque M12 Carriage Bolt to 58 ft-lbs, other M12 fasteners to 86 ft-lbs.
***Periodically Check The Receiver Hitch To Ensure That All Fasteners *** Are Tight & All Structural Components Are Sound.	

The instruction here is for your reference only. We strongly recommend the professional installer for best result. We are not responsible for any damage caused by the installation. Thank you for choosing our product!