



Hitch Installation Instruction

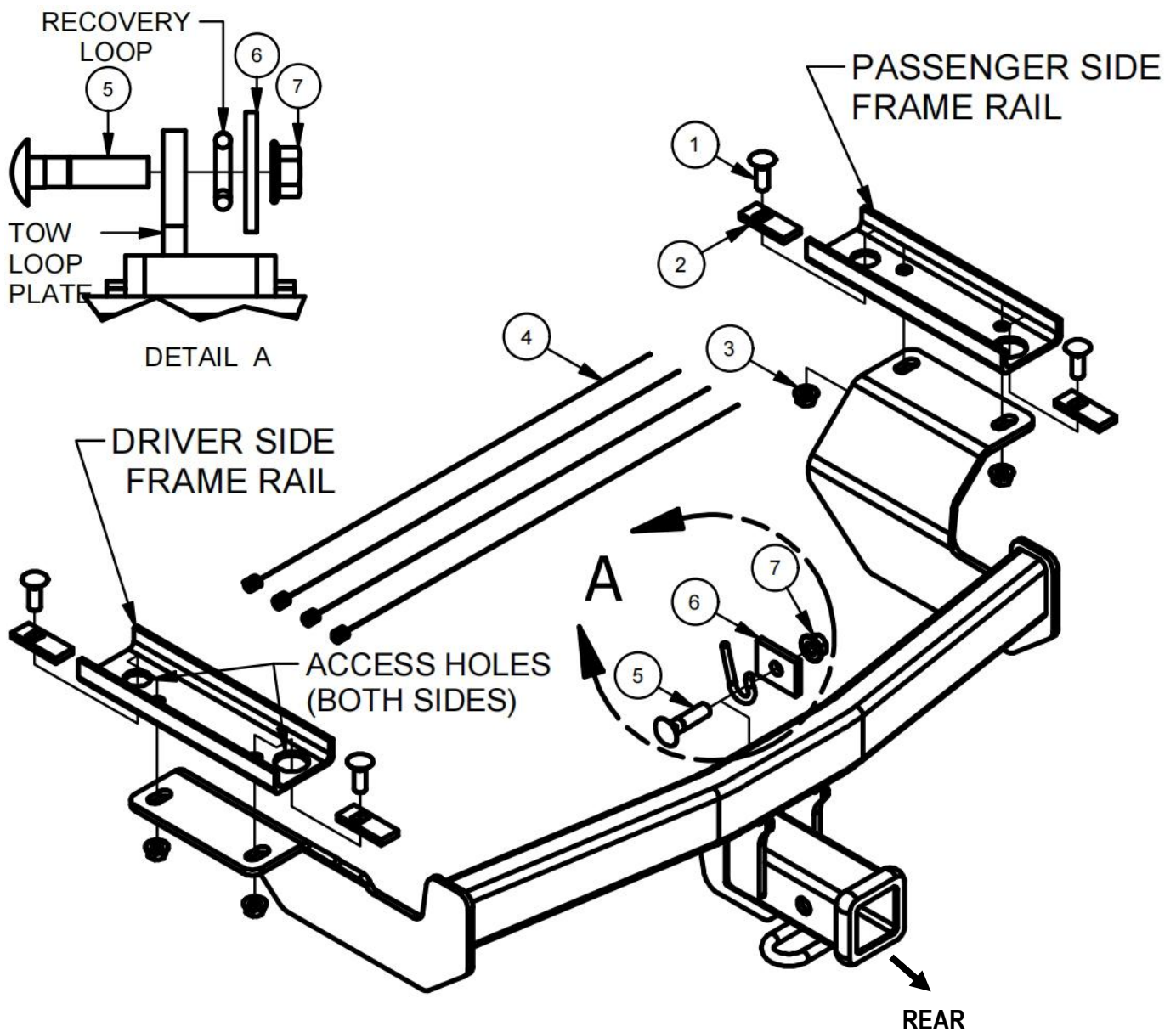
REV.20241201

Part#	HT-R30397	Application	For 2017-2024 Honda CR-V
-------	-----------	-------------	--------------------------

Hardware List	Item	Part Name	QTY	Description	Item	Part Name	QTY	Description
	1	Carriage Bolts	4	M10X1.5-35	5	Carriage Bolts	1	M12X1.75-50
	2	Spacers	4	With SQ Hole	6	Spacers	1	With Round Hole
	3	Hex Flange Nuts	4	M10X1.5	7	Hex Flange Nuts	1	M12X1.75
	4	Fishwires	4					

Gross Load Capacity When Used As A Weight Carrying Hitch: 3500 LBS. Trailer Weight & 525 LBS. Tongue Weight.
DO NOT EXCEED VEHICLE MANUFACTURER'S RECOMMENDED TOWING CAPACITY.

- * Trimming Required
- * No Drilling Required


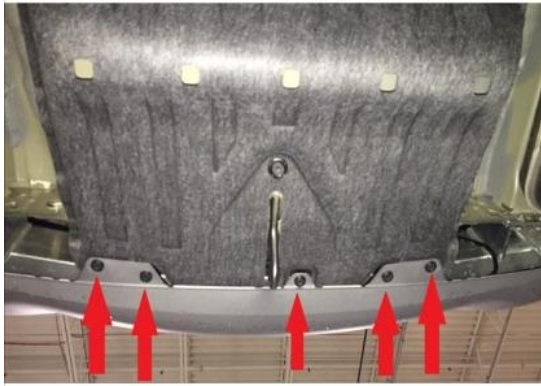

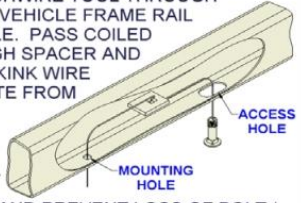
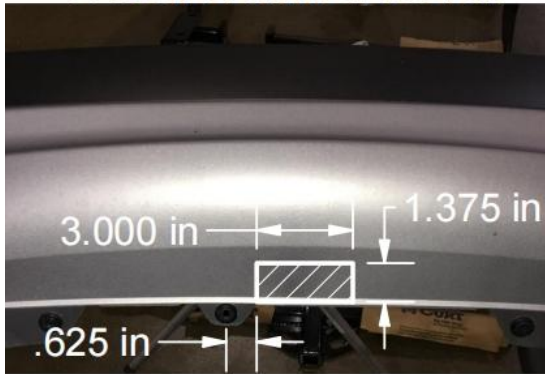
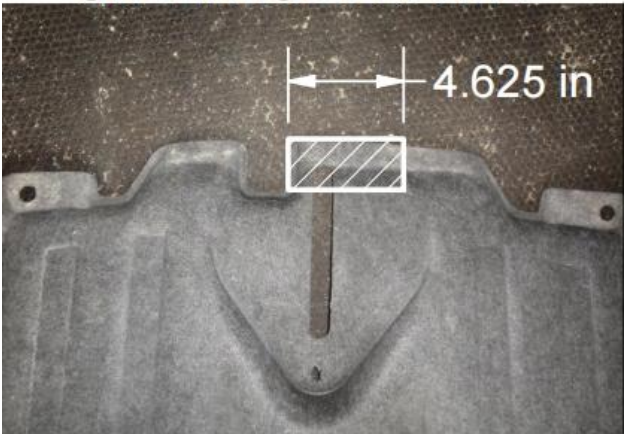


The instruction here is for your reference only. We strongly recommend the professional installer for best result.
We are not responsible for any damage caused by the installation. Thank you for choosing our product!



Hitch Installation Instruction

Part#	HT-R30397	Application	For 2017-2024 Honda CR-V
-------	-----------	-------------	--------------------------

Step	Description
1	Lower exhaust by removing (3) rubber isolators from the exhaust towards the rear of the vehicle. Remove (5) fasteners from lower fascia.
	 
2	Fishwire (2) M10X1.5-35 carriage bolts and (2) SQ Hole spacers through the vehicle access holes to the attachment holes on each side. See FISHWIRE DIAGRAM below.
	 <div data-bbox="810 967 1378 1272"> <p>FISHWIRE TECHNIQUE</p> <p>INSERT COILED END OF FISHWIRE TOOL THROUGH HITCH MOUNTING HOLE IN VEHICLE FRAME RAIL AND OUT THE ACCESS HOLE. PASS COILED END OF FISHWIRE THROUGH SPACER AND THREAD BOLT INTO COIL. KINK WIRE TO KEEP SPACER SEPARATE FROM BOLT AS SHOWN. PULL FISHWIRE, SPACER, AND BOLT THROUGH FRAME AND OUT MOUNTING HOLE. USE FISHWIRE TO GUIDE HITCH DURING MOUNTING AND PREVENT LOSS OF BOLT / SPACER INSIDE FRAME RAIL.</p> <p><small>**NOTE: SOME VEHICLES MAY FISHWIRE THROUGH END OF FRAME**</small></p>  </div>
3	Trim lower fascia as shown in FASCIA TRIM DIAGRAM below. CAUTION: Be aware of electrical components when trimming. NOTE: Trimming of underbody panel may ease installation.
	<div data-bbox="304 1453 756 1496"> <p>FASCIA TRIM DIAGRAM</p>  </div> <div data-bbox="884 1453 1342 1496"> <p>UNDERBODY PANEL</p>  </div> <div data-bbox="938 1935 1278 1975"> <p>TRIM DIAGRAM</p> </div>

The instruction here is for your reference only. We strongly recommend the professional installer for best result. We are not responsible for any damage caused by the installation. Thank you for choosing our product!



Hitch Installation Instruction

Part#	HT-R30397	Application	For 2017-2024 Honda CR-V
4	Raise hitch into position feeding the fishwires through the holes in the hitch. Once hitch is in place, remove the fishwires and loosely secure (2) M10 hex flange nuts on each side. Secure Tow Loop Plate to recovery loop using (1) M12X1.75-50 bolt, (1) Round Hole Spacer and (1) M12 hex flange nut.		
<div></div>			
5	Torque all M10 hardware to 32 ft-lbs and all M12 hardware to 58 ft-lbs. Reinstall items removed in Step 1.		
<div></div>			
<p>***Periodically Check The Receiver Hitch To Ensure That All Fasteners *** Are Tight & All Structural Components Are Sound.</p>			

The instruction here is for your reference only. We strongly recommend the professional installer for best result.
We are not responsible for any damage caused by the installation. Thank you for choosing our product!