



Hitch Installation Instruction

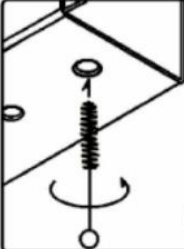
REV.20231201

Part#	HT-R30119		Application	For 2012-2016 Honda CR-V ALL				
Hardware List	Item	Part Name	QTY	Description	Item	Part Name	QTY	Description
	1	Flange Nut	2	M10*1.5	3	Conical Washer	4	M10
	2	Hex Bolts	4	M10X1.25-30				

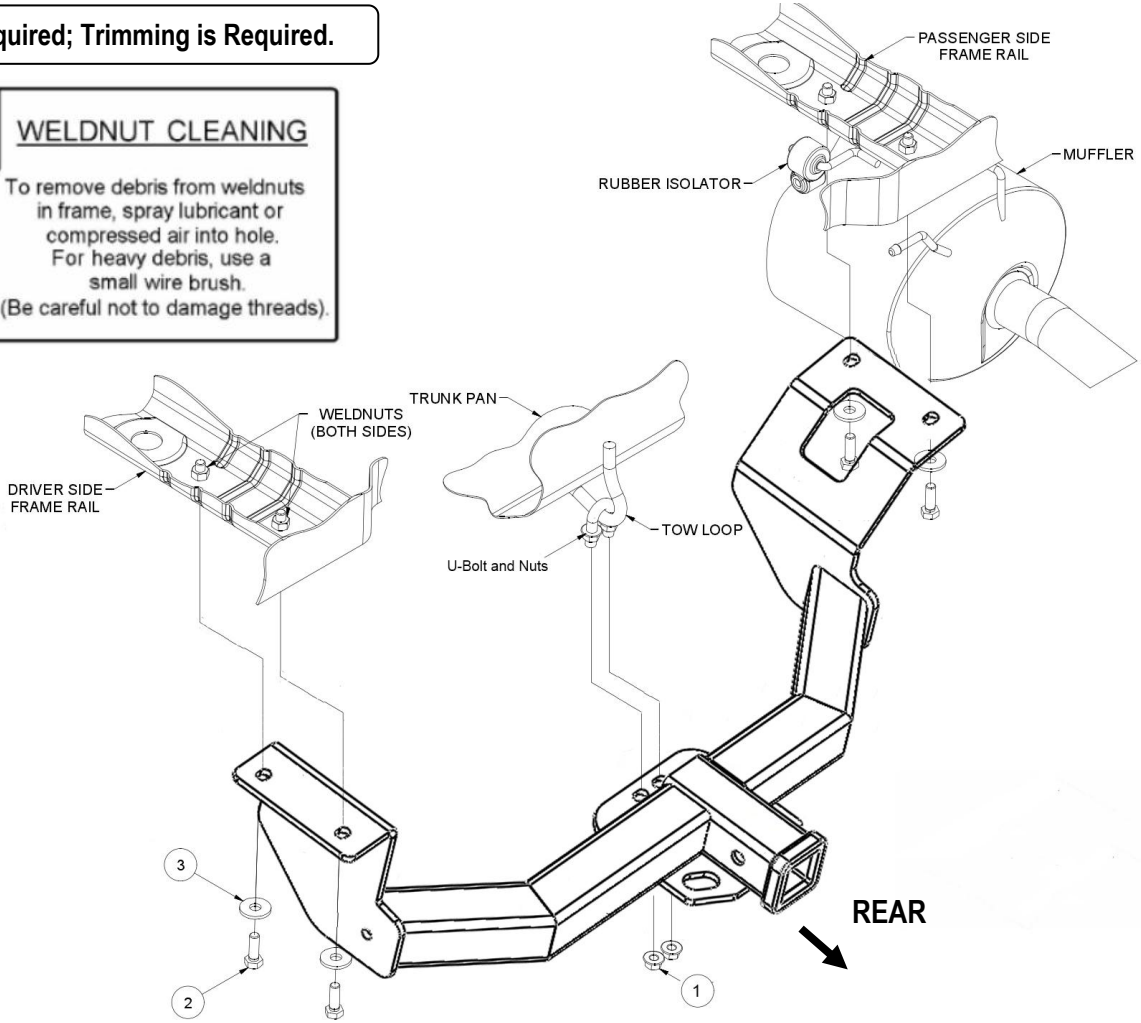
Gross Load Capacity When Used As A Weight Carrying Hitch: 3500 LBS. Trailer Weight & 350 LBS. Tongue Weight.
*****DO NOT EXCEED VEHICLE MANUFACTURER'S RECOMMENDED TOWING CAPACITY.*****

No Drilling Required; Trimming is Required.

WELDNUT CLEANING

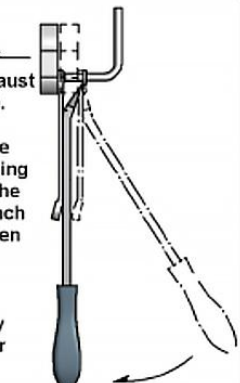


To remove debris from weldnuts in frame, spray lubricant or compressed air into hole. For heavy debris, use a small wire brush. (Be careful not to damage threads).



CONICAL TOOTHED WASHER ORIENTATION DIAGRAM

RUBBER ISOLATOR REMOVAL DIAGRAM



This technique can be used if and Exhaust Hanger Removal Pliers is not available.

Using a 5/8" open end wrench, slide the wrench up to the rubber isolator, cradling the hanger rod as shown. Next place the flat edge of a pry bar between the wrench and the hanger stop or hanger rod. Then simply rotate the pry bar toward the wrench to remove the rubber isolator.

Note: Using a spray lubricant or soapy water on the hanger rod and the rubber isolator helps removal.

The instruction here is for your reference only. We strongly recommend the professional installer for best result. We are not responsible for any damage caused by the installation. Thank you for choosing our product!



Hitch Installation Instruction

Part#	HT-R30119	Application	For 2012-2016 Honda CR-V ALL
Step	Description		
1	Remove (10) fasteners and lower underbody panel.		
2	Lower exhaust by removing (2) Rubber isolators from the hangers attached to the exhaust. (See RUBBER ISOLATOR REMOVAL DIAGRAM)		
3	Mark and trim underbody panel. Reattach underbody panel using fasteners removed in Step (1). Note: Dimensions are approximate, confirm fit prior to trimming. Use ribs of the underbody panel as cutting guides.(See UNDERBODY PANEL TRIM DIAGRAM)		
<p>NOTE: DIMENSIONS ARE APPROXIMATE, CONFIRM FIT PRIOR TO TRIMMING</p> <p>EXISTING TOW LOOP CUT-OUT</p> <p>7.00 in</p> <p>3.25 in</p> <p>1.50 in</p> <p>16.50 in</p> <p>UNDERBODY PANEL TRIM DIAGRAM</p>			
4	Insert M10 U-bolt through tow hook, as shown.		
5	Raise hitch into position and secure using M10 flange nuts to the U-bolt and 10 mm bolts with M10 conical toothed washers to the weldnuts in the frame rails.(See WELDNUT CLEANING DIAGRAM)		
6	Torque all 10mm hardware to 31-32 ft-lbs.		
7	Raise exhaust back into position.		
<p>***Periodically Check The Receiver Hitch To Ensure That All Fasteners *** Are Tight & All Structural Components Are Sound.</p>			

The instruction here is for your reference only. We strongly recommend the professional installer for best result. We are not responsible for any damage caused by the installation. Thank you for choosing our product!