



Hitch Installation Instruction

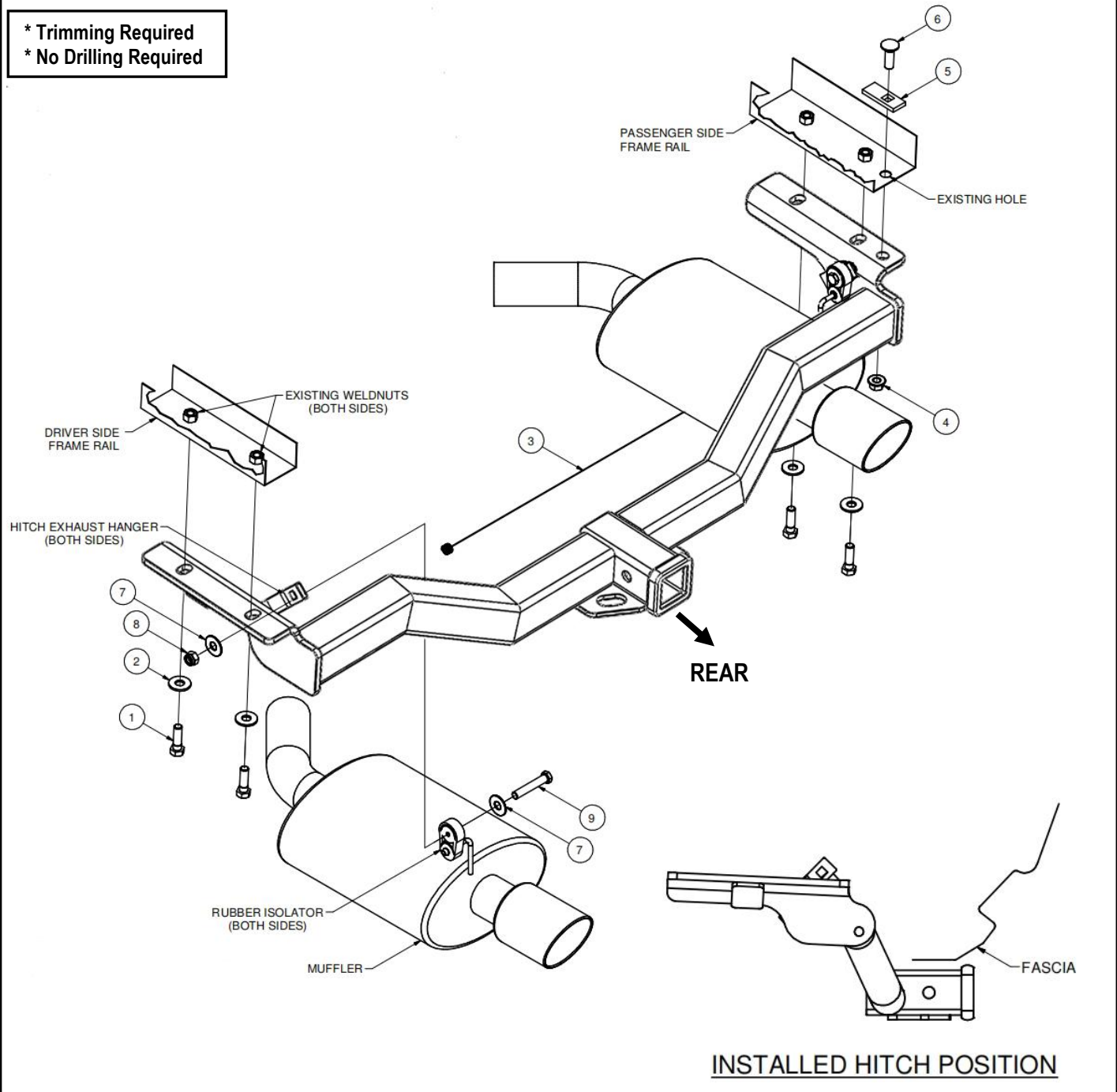
REV.20240401

Part#	HT-R30100	Application	For 2011-2017 Ford Explorer \2013-2017 Ford Police Interceptor Utility					
-------	-----------	-------------	--	--	--	--	--	--

Hardware List	Item	Part Name	QTY	Description	Item	Part Name	QTY	Description
	1	Hex Bolts	4	M12X1.75-40	6	Carriage Bolt	1	M12X1.75-35
	2	Conical Washers	4	M12	7	Flat Washers	4	M12
	3	Fishwire	1		8	Nylock Hex Nuts	2	M12
	4	Hex Flange Nut	1	M12X1.75	9	Hex Bolts	2	M12X1.75-65
	5	Spacer	1	With Square Hole				

Gross Load Capacity When Used As A Weight Carrying Hitch: 4000 LBS. Trailer Weight & 400 LBS. Tongue Weight.
 Gross Load Capacity When Used As A Weight Distribution Hitch: 5000 LBS. Trailer Weight & 500 LBS. Tongue Weight.
*****DO NOT EXCEED VEHICLE MANUFACTURER'S RECOMMENDED TOWING CAPACITY.*****

* Trimming Required
 * No Drilling Required

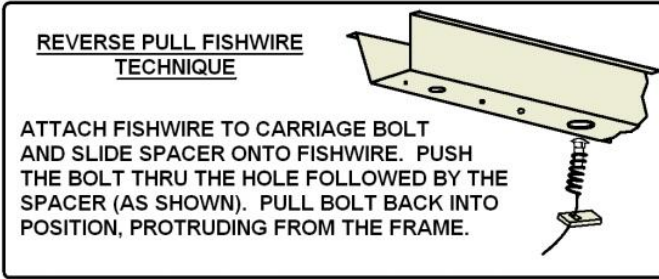


The instruction here is for your reference only. We strongly recommend the professional installer for best result. We are not responsible for any damage caused by the installation. Thank you for choosing our product!



Hitch Installation Instruction

Part#	HT-R30100	Application	For 2011-2017 Ford Explorer \2013-2017 Ford Police Interceptor Utility
-------	-----------	-------------	--



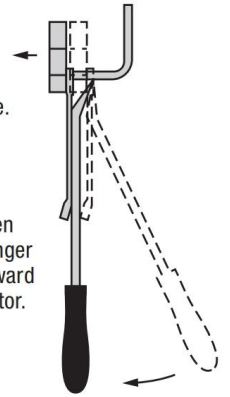
RUBBER ISOLATOR REMOVAL DIAGRAM

This technique can be used if exhaust hanger removal pliers are not available.

Using a 5/8" open end wrench, slide the wrench up to the rubber isolator, cradling the hanger rod as shown.

Place the flat edge of a pry bar between the wrench and the hanger stop or hanger rod. Then simply rotate the pry bar toward the wrench to remove the rubber isolator.

Note: Using a lubricant or soapy water on the hanger rod and the rubber isolator helps removal.



Step	Description
------	-------------

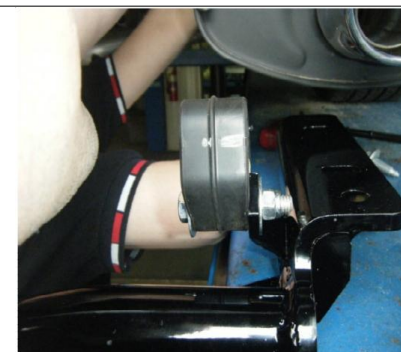
1	Remove (3) rubber isolators to lower exhaust. Use wire to hold exhaust and prevent damage. (See Rubber Isolator Removal Diagram.)
---	---



2	Remove (2) rubber isolators from muffler. Remove exhaust hanger and/or exhaust hanger with existing tow loop. Return hangers and hardware to vehicle owner.
---	---




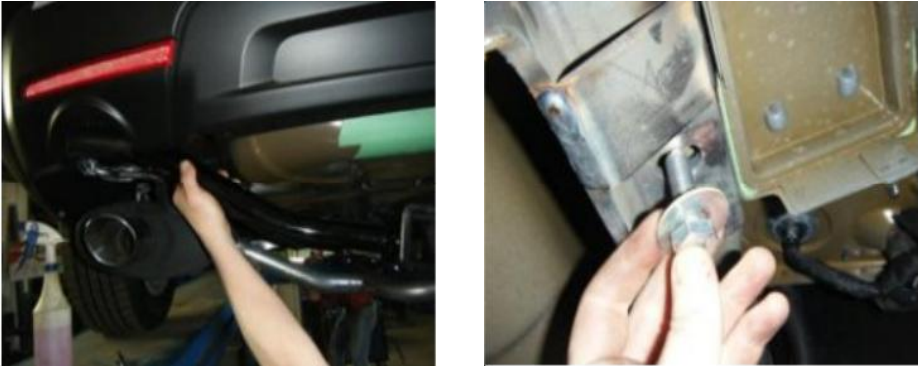

3	Install rubber isolators from Step 2 onto hitch with M12 hex bolts. Secure the isolators with M12 flat washers and nylock hex nuts as shown.
---	--



The instruction here is for your reference only. We strongly recommend the professional installer for best result. We are not responsible for any damage caused by the installation. Thank you for choosing our product!



Hitch Installation Instruction

Part#	HT-R30100	Application	For 2011-2017 Ford Explorer \2013-2017 Ford Police Interceptor Utility
4	Reverse fishwire carriage bolt and spacer through existing hole in passenger side frame rail. (See Reverse Pull Fishwire Technique.)		
			
5	Raise hitch into position and secure with supplied M12 hex bolts and conical toothed washers into existing vehicle weldnuts. Secure carriage bolt with supplied hex flange nut.		
			
6	Torque M12 Carriage bolt to 58 lb-ft and other M12 hardware to 86 lb-ft. Raise exhaust back into position.		
			
***Periodically Check The Receiver Hitch To Ensure That All Fasteners *** Are Tight & All Structural Components Are Sound.			

The instruction here is for your reference only. We strongly recommend the professional installer for best result. We are not responsible for any damage caused by the installation. Thank you for choosing our product!