



PATENT PRODUCT

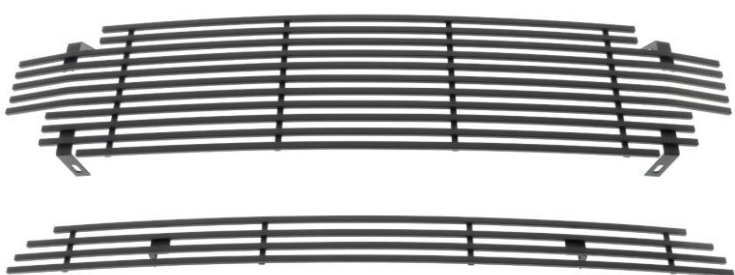
Grille Installation Instruction

Rev. 200801

Part#	GR20HGG72J	Application	2001-2004 Toyota Tacoma
-------	------------	-------------	-------------------------

Parts List	Item	Part Name	QTY	Description	Item	Part Name	QTY	Description
	1	Billet Grille	2	Stainless steel	4	Kep Nuts	5	1/4" -20
	2	Tab	1		5	Hex Bolts	5	1/4" -20x3/4"
	3	Flat Nut	2	8#	6	Truss Head Tapping Screws	2	8# x 3/4"

Install Notes: Overlay Replacement Drill Cut

Step	Description	illustration
1	Identify the grille & hardware with parts list.	
2	Start with the upper section. Open hood and remove 3 screws, pull turn signals forward (may be very tight). Remove lens. Press fingers down on stock fasteners, pull forward under lower outer headlight with snap fastener; pull out until shell is released. Tape off chrome area, so no scratches in shell; always lay shell on soft clean surface.	
3	Trim lower and sides of stock grill at base of stock bars; at the top keep 1/4 of bar that stock mount is located from (see picture 1). Mark from chrome trim back 5/8 inch from bottom and sides of shell, trim shell (see picture 2), saving center mount.	
4	(See picture 3) Drill hole in cross of side ports, trim out cross bars of shell from back side, sand outer edge approximately 1/8 inch remaining from outside use straight edge, sanding remaining edge down till straight edge touches 5/8 inch main opening to 1/8 inch outer opening. Factory supports in shell may need trimming to allow grill to rest flush with sides of center opening and end opening at the same time. (Recommend you take your time to insure grill sits well in openings.)	
5	(See picture 4) Lower mounts of stock shell should be level for lower mounts of grill, upper mounts should have 1/4 inch (see picture 5) of upper stock trimmed, mount with 5/8 inch remaining to follow side trim of 5/8 inch.	
6	With grill shell facing down insert grill, trim any and all factory supports not allowing grill to rest at face 5/8 inch trim line (see picture 5). Remove grill and sand all edges in opening with 120 grit sand paper. Spray with flat black trim paint (available at auto body supply stores).	
7	With grill shell face down, insert grill mark and drill holes for slotted tabs in the outer upper and lower mounts, press down on grill; install 1/4 inch twenty bolts and nuts. Tighten and turn over to make sure grill is forward in the opening.	
8	(See picture 6) Hood latch needs to be bent facing up and the end bent back as in picture. Hold latch firmly when modifying.	
9	Reinstall shell and grille hood latch; should be flush with top of grill shell.	

The instruction here is for your reference only. You may need to bend the grille a little bit to adjust to fit. We strongly recommend the professional installer for best result. We are not responsible for any damage caused by the installation. Thank you for choosing our product!

Part#	GR20HGG72J	Application	2001-2004 Toyota Tacoma
-------	------------	-------------	-------------------------



Photo #1

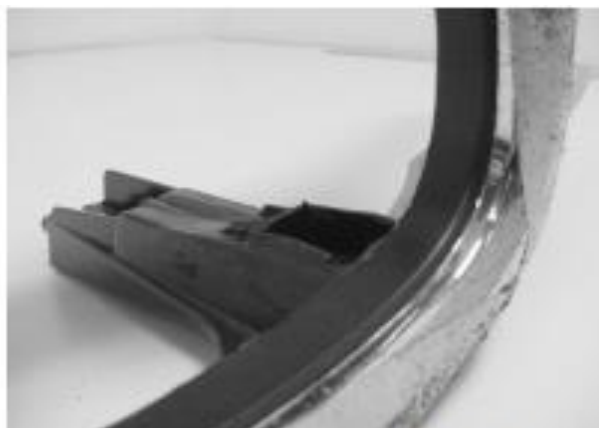


Photo #2

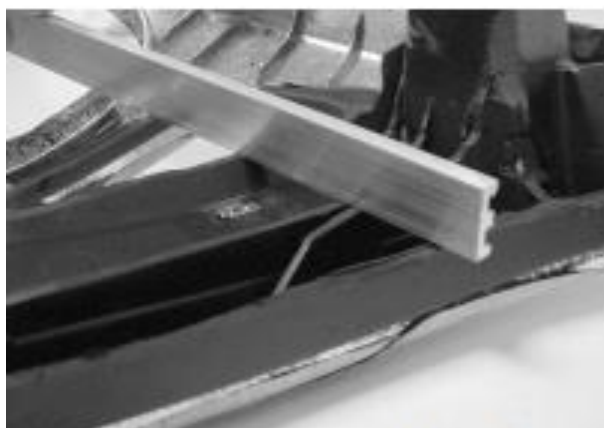


Photo #3

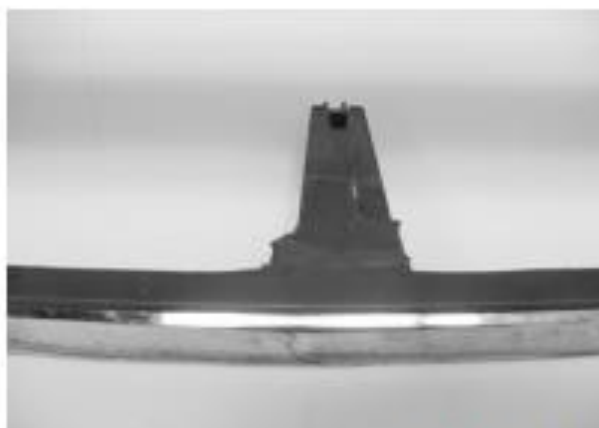


Photo #4



Photo #5



Photo #6

The instruction here is for your reference only. You may need to bend the grille a little bit to adjust to fit. We strongly recommend the professional installer for best result. We are not responsible for any damage caused by the installation. Thank you for choosing our product!

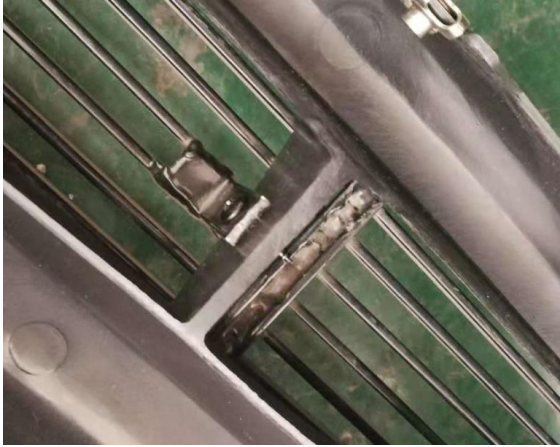


PATENT PRODUCT

Grille Installation Instruction

Rev. 200801

Part#	GR20HGG72J	Application	2001-2004 Toyota Tacoma
-------	------------	-------------	--------------------------------

10	Move on to the lower section. Remove the license plate from the vehicle. Center the billet in the bumper opening.	
11	Center the billet in the bumper opening. The two tabs welded to the rear of the insert align with the two outer vertical bars in the opening. Make sure the insert is straight and mark the holes in the tabs to the bars. Drill a 1/8" hole at each mark. Fasten using the screws and nuts.	
12	Secure billet grille using the nuts from the back side of the OEM grille shell.	
13	Make sure the billet grille is centered and tighten the fasteners. Re-install the license plate if desired.	
14	Installation completed!!!	

The instruction here is for your reference only. You may need to bend the grille a little bit to adjust to fit. We strongly recommend the professional installer for best result. We are not responsible for any damage caused by the installation. Thank you for choosing our product!