



# PATENT PRODUCT

## Grille Installation Instruction

Rev. 20220601

|              |             |                    |                              |
|--------------|-------------|--------------------|------------------------------|
| <b>Part#</b> | T85382C&J&S | <b>Application</b> | For 2005-2008 Toyota Corolla |
|--------------|-------------|--------------------|------------------------------|

| Parts List | Item | Part Name     | QTY | Description     | Item | Part Name   | QTY | Description |
|------------|------|---------------|-----|-----------------|------|-------------|-----|-------------|
|            | #1   | Billet Grille | 1   | Stainless Steel | #4   | Kep Nuts    | 4   | 10-24       |
|            | #2   | Kep Nuts      | 4   | 10-24           | #5   | U-Clip Nuts | 2   | 8#          |
|            | #3   | U-Clip Nuts   | 2   | 8#              | #6   | Kep Nuts    | 4   | 10-24       |

|                       |   |  |  |                                     |
|-----------------------|---|--|--|-------------------------------------|
| <b>Install Notes:</b> | <b>Overlay</b> <input type="checkbox"/> | <b>Replacement</b> <input checked="" type="checkbox"/> | <b>Drill</b> <input checked="" type="checkbox"/> | <b>Cut</b> <input type="checkbox"/> |
|-----------------------|---|--|--|-------------------------------------|

| Step | Description  | illustration |
|------|--|--------------|
| 1    | Identify the grille & hardware with parts list.  |              |
| 2    | Optional: pop hood, remove the black plastic cover (on top of OEM grille) from vehicle. If you are still unable to access the rear, remove the grille shell according to factory manual. |              |
| 3    | Attach the two powder coated brackets to the billet grille, using the bolts, and kep nuts. See figure 1.   |              |
| 4    | Place the billet grille into the opening of the vehicle, center the billet then mark and drill, into the core support where the powder coated brackets line up.                          |              |
| 5    | Next mark and drill another hole into the plastic of the bumper, where the lower bracket lines up.   |              |
| 6    | Secure the lower portion of the billet grille using the #8 screw and speed clip. The speed clip gets used as a nut. See figure 2.  |              |
| 7    | Secure the upper brackets of the billet grille to the core support using the remaining bolts, and kep nuts. See figure 3.  |              |
| 8    | Make sure the billet grille is centered and tighten the fasteners, but do not over-tighten.  |              |
| 9    | Reinstall the plastic shroud with the fasteners removed in Step 2.   |              |
| 10   | Installation completed.  |              |



Figure 1

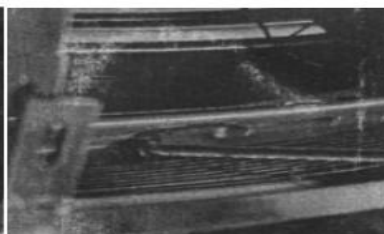


Figure 2

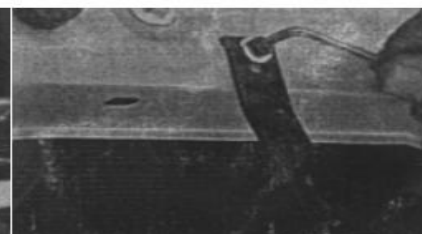


figure 3

The instruction here is for your reference only. We strongly recommend the professional installer for best result. We are not responsible for any damage caused by the installation. Thank you for choosing our product!