


Part#	GR20HEC82A	Application	05~08 Toyota Corolla - Billet Grille
-------	------------	-------------	--------------------------------------

Parts List	Item	Part Name	QTY	Description	Item	Part Name	QTY	Description
	1	Billet Grille	1	Aluminum	4	Button Head Screws	4	10-24 × 1
	2	Kep Nuts	4	10-24	5	Truss Head Tapping Screws	2	8 × 5/8"
	3	U-Clip Nuts	2	8#	6	Powder Coated Brackets	2	

Install Notes: Overlay Replacement Drill Cut

Step	Description	illustration
1	Identify the grille & hardware with parts list.	
2	Remove the grille shell from the vehicle.	
3	Attach the two powder coated brackets to the billet grille, using the bolts, and kep nuts. See figure 1.	
4	Place the billet grille into the opening of the vehicle, center the billet then mark and drill, into the core support where the powder coated brackets line up.	
5	Next mark and drill another hole into the plastic of the bumper, where the lower bracket lines up.	
6	Secure the lower portion of the billet grille using the #8 screw and speed clip. The speed clip gets used as a nut. See figure 2.	
7	Secure the upper brackets of the billet grille to the core support using the remaining bolts, and kep nuts. See figure 3.	
8	Make sure the billet grille is centered and tighten the fasteners. but do not over-tighten.	
9	Reinstall the black plastic cover which was removed in step 2.	
10	Installation completed!!!	

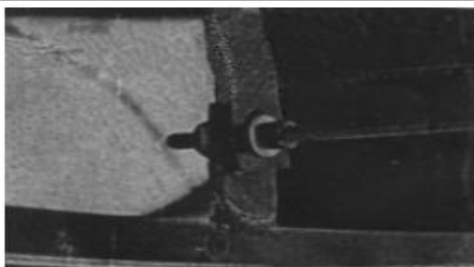


Figure 1

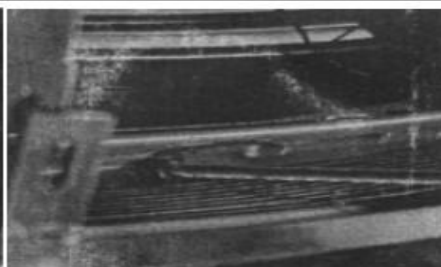


Figure 2

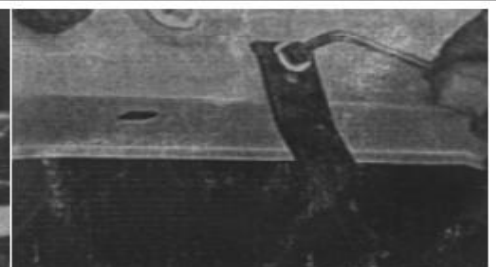


figure 3

The instruction here is for your reference only. You may need to bend the billet grille bars or tabs a little bit to adjust to fit. We strongly recommend the professional installer for best result. Please use masking tape and tape the OEM grille shell along the edge to protect your vehicle during installation. We are not responsible for any damage caused by the installation. Thank you for choosing our product!