



# PATENT PRODUCT Grille Installation Instruction

Rev. 20201101

<b>Part#</b>	T85140C&J&S	<b>Application</b>	For 2006-2007 Toyota Avalon
--------------	-------------	--------------------	-----------------------------

Parts List	Item	Part Name	QTY	Description	Item	Part Name	QTY	Description
	#1	Billet Grille	1	Stainless Steel	#5	Powder Coated L-Brackets	2	
	#2	Screws	2	8#	#6	Allen Head Bolts	2	1"
	#3	Speed Clips	2		#7	Fully Threaded Studs	2	1 1/4"
	#4	K-Lock Nuts	4		#8	Powder Coated Flat Brackets	2	

**Install Notes:** Overlay  Replacement  Drill  Cut

Step	Description	illustration
1	Identify the grille & hardware with parts list.	
2	Remove the plastic filler panel that covers the gap between the factory grille shell and the core support and save all hardware as it will be reused later.	
3	After the plastic filler panel has been removed you can remove the factory grille shell.	
4	Cut off the (4) plastic bumper tabs (the tabs that point straight out towards the front of the vehicle not the tabs that go up then out.) <b>Figs 1 &amp; 2</b>	

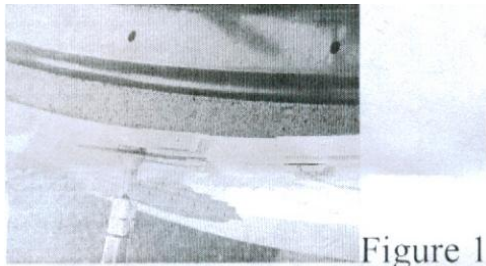


Figure 1

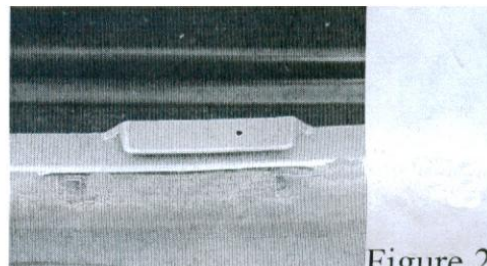


Figure 2

5	Install the Fully Threaded Studs into the tabs on the backside of the billet grille. Attach the Powder Coated L-Brackets to the fully threaded studs using the K-Lock Nuts. <b>Fig 3</b>	
6	Place the billet grille into the factory grille shell opening and attach the L-Brackets to the lip on the bottom of the factory grille shell opening. <b>Fig 4</b>	

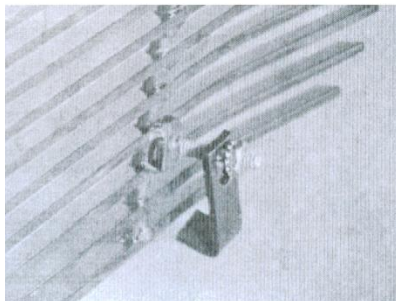


Figure 3

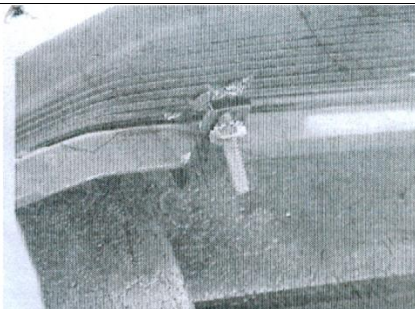
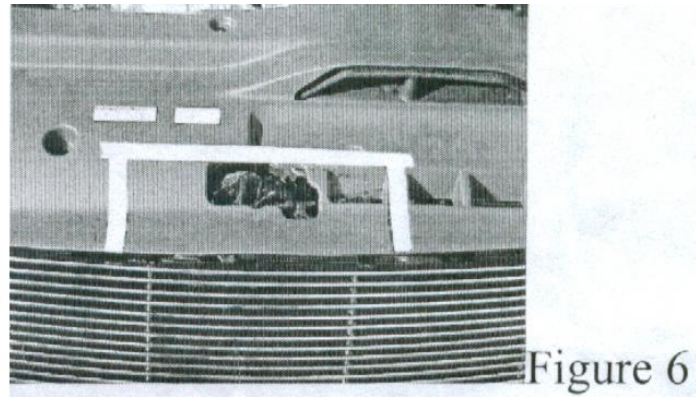
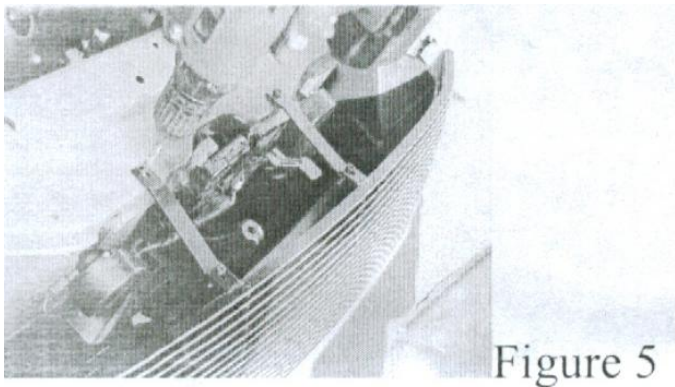


Figure 4

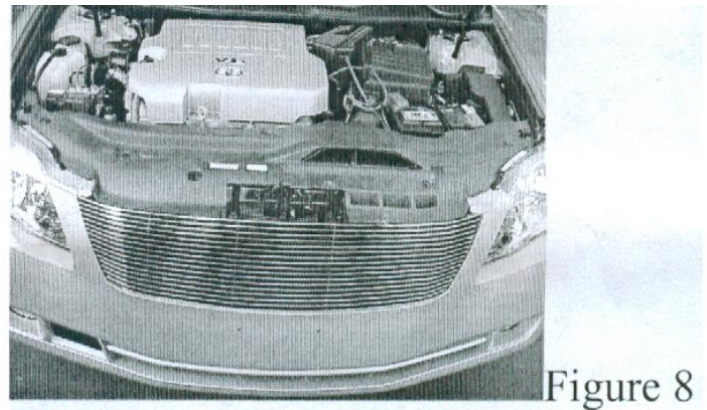
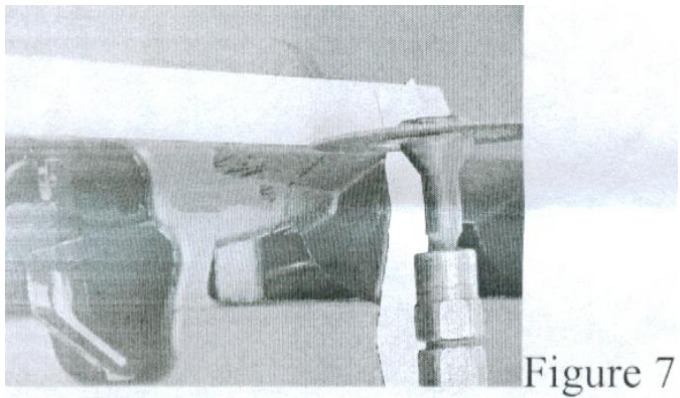
The instruction here is for your reference only. We strongly recommend the professional installer for best result. We are not responsible for any damage caused by the installation. Thank you for choosing our product!

<b>Part#</b>	T85140C&J&S	<b>Application</b>	For 2006-2007 Toyota Avalon
--------------	-------------	--------------------	-----------------------------

7	Attach the powder coated flat brackets to the upper grille mounts and hold in place using the Allen Head Bolts and K-Lock Nuts.
8	Once the grille is centered to your liking mark and drills the mounting holes in the core support. <b>Fig 5</b>
9	Fasten the upper billet grille mounts to the vehicle using the #8 Screws and Speed Clips.
10	Make sure that the billet grille is centered to your liking and secure all hardware.
11	Place the plastic filler panel into position and mark the area that needs to be removed to clear the upper billet grille mounts. <b>Fig 6</b>



12	Cut out the marked area on the plastic filler panel. <b>Fig 7 &amp; 8</b>
----	---



13	Once the plastic filler panel has been cut out reinstall it back onto the vehicle using the hardware saved from <b>Step 1</b> .
14	Installation completed.

The instruction here is for your reference only. We strongly recommend the professional installer for best result. We are not responsible for any damage caused by the installation. Thank you for choosing our product!