

Part#	GR19HGF16A	Application	07~09 Saturn Outlook - Billet Grille
-------	------------	-------------	--------------------------------------

Parts List	Item	Part Name	QTY	Description	Item	Part Name	QTY	Description
	1	Billet Grille	1	Aluminum	5	Truss Socket Tapping Screws	2	8# × 1 "
	2	2-Hole Tabs	4		6	U-Clip Nuts	2	
	3	Tabs	2		7	Nuts	4	
	4	Bolts	4					

Install Notes: Overlay  Replacement  Drill  Cut


Step	Description	illustration
1	Identify the grille & hardware with parts list.	
2	Remove the plastic push in clips that retain the black plastic cover around the hood latch and the top edge of the factory grille.	
3	Remove the plastic push in clips and black Phillips head screws that hold down the top edge of the factory grille.	
4	Reach behind the grille and remove the two hex head screws retaining the upper corners. Release the chrome plastic locking tabs around the perimeter of the grille with a flat screwdriver, and remove the factory grille. See photo 1.	
5	Install the 2 supplied tinnerman clips onto the two hook shaped brackets in the hardware kit, and slide them into the 2 center lower mounting slots in the bumper from the backside. See photo 2.	
6	Cut a small notch out of each of the two mounts in the upper corners of the grille opening (where you removed the screws in step 3) to make clearance for the billet grille bars. See photo 3.	
7	Center the grille in the opening and allow it to sit on the bottom. Attach the two lower mounting brackets loosely with the supplied 3/4 " oval head Phillips screws (they are the only ones that will fit between the bars). Remove the grille and adjust the location of the tinnerman clip on the slot if necessary for proper alignment.	
8	Lean the top of the grille back into the opening and attach it to the radiator core support using the supplied brackets, 1/4 " bolts and nuts, and the factory Phillips head screws. See photo 4.	
9	Reinstall plastic cover around hood latch area with factory push in clips.	
10	Installation completed!!!	



Photo 1



Photo 2

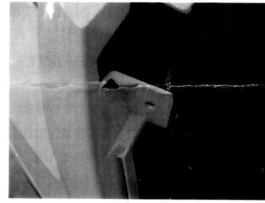


Photo 3

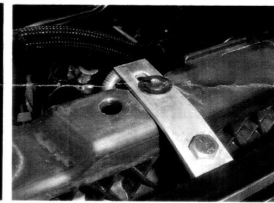


Photo 4

The instruction here is for your reference only. You may need to bend the billet grille bars or tabs a little bit to adjust to fit. We strongly recommend the professional installer for best result. Please use masking tape and tape the OEM grille shell along the edge to protect your vehicle during installation.

We are not responsible for any damage caused by the installation. Thank you for choosing our product!