



PATENT PRODUCT


Grille Installation Instruction

Rev. 190301

Part#	GR19HGF15 C/S/J	Application	For 2007-2009 Saturn Aura
--------------	--------------------	--------------------	----------------------------------

Parts List	Item	Part Name	QTY	Description	Item	Part Name	QTY	Description
	1	Billet Grille	1	Stainless steel	5	Phillips Screws	2	8#x3/4"
	2	L Shape Tabs	2		6	Keyslot Hex Head Tapping Screw	4	1/4 X3/4"
	3	Tabs	2		7	Truss Socket Tapping Screw	4	8#X1"
	4	U-Clip Nuts	6		8	Screws	2	8#x1 1/2"

Install Notes: Overlay Replacement Drill Cut

Step	Description	illustration
1	Identify the grille & hardware with parts list.	
2	Remove front license plate and drill out the two rivets mounting the license plate bracket with a 3/16 " drill bit.	
3	Remove the plastic splash pan from underneath the front of the vehicle by removing the 4 screws across the front edge, and the 2 plastic push in clips, one on each side towards the rear of the pan. See photos 1 and 2.	
4	Release the plastic push in clips around the perimeter of the backside of the black plastic bumper grill insert and push the grill out the back of the bumper.	
5	Install the 6 supplied tinnerman clips onto the slotted side of all 4 of the supplied brackets, and on the round hole side of the 2 longer brackets as shown in photo 3.	
6	Cut off the factory mounting tabs along the bottom edge of the opening flush to the backside of the opening with a sharp razor knife. There are 7 tabs that need to be removed. See photo 4.	
7	Attach the short brackets to the top mounting tabs of the grill, and the longer brackets to the bottom mounting tabs, loosely, using the 4 supplied screws with the smaller heads. The screws will go through the grill from the front side and into the bracket that will be on the back. Photos 5 and 6 show the correct orientation of the brackets.	
8	Center the billet grill insert behind the opening, and attach the upper mounting brackets to the black plastic shelf just above the opening using 2 of the supplied Phillips pan head screws.	
9	Mark and drill 2 1/8 " holes in the bottom lip edge of the bumper for the 2 lower mounting brackets. Secure the grill using the other two pan head screws.	
10	Tighten all mounting hardware.	
11	Re-install splash pan using factory hardware.	
12	Re-install front license plate bracket using 2 (or all 4) of the supplied hex head, coarse thread silver screws.	

The instruction here is for your reference only. You may need to bend the grille a little bit to adjust to fit. We strongly recommend the professional installer for best result. We are not responsible for any damage caused by the installation. Thank you for choosing our product!

Part#	GR19HGF15 C/S/J	Application	For 2007-2009 Saturn Aura
-------	--------------------	-------------	---------------------------



Photo 1



Photo 2

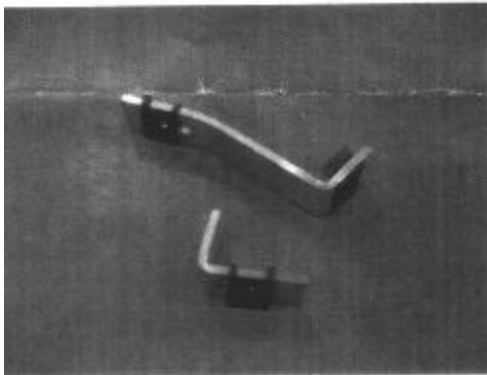


Photo 3



Photo 4



Photo 5 (top)



Photo 6 (bottom)

The instruction here is for your reference only. You may need to bend the grille a little bit to adjust to fit. We strongly recommend the professional installer for best result. We are not responsible for any damage caused by the installation. Thank you for choosing our product!