


Part#	GR19FGF19A	Application	07~09 Saturn Sky (Not For Turbo) – Low Bumper Billet Grille					
-------	------------	-------------	--	--	--	--	--	--

Parts List	Item	Part Name	QTY	Description	Item	Part Name	QTY	Description
	1	Billet Grille	5	Aluminum	3	Powder Coated Brackets	4	
	2	K-Lock Nuts	4	10-24	4	Fully Threaded Studs	4	1 1/4" 10-24

Install Notes: Overlay Replacement Drill Cut

Step	Description	illustration
------	-------------	--------------

1	Identify the grille & hardware with parts list.	
---	---	--

2	Remove all bolts and clips that hold the upper portion of the front fascia to the vehicle. Figure 1.	
---	--	--

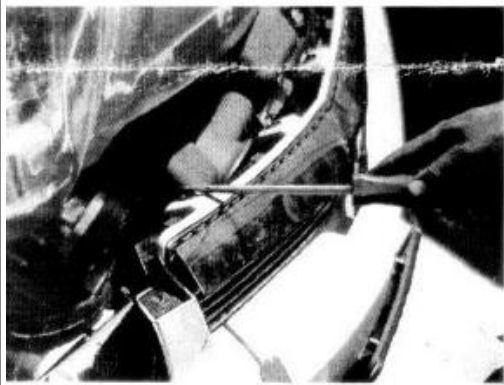


Figure 1



Figure 2

3	Remove the four bolts from the top of the wheel well; there is two on each side. Figure 3 & 4.	
---	--	--

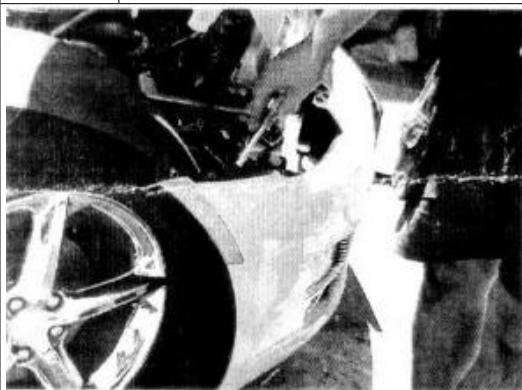


Figure 3

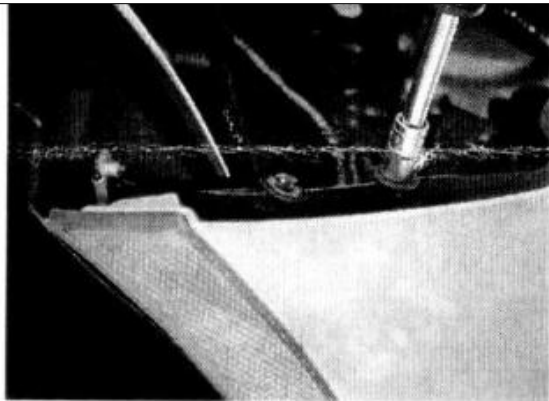
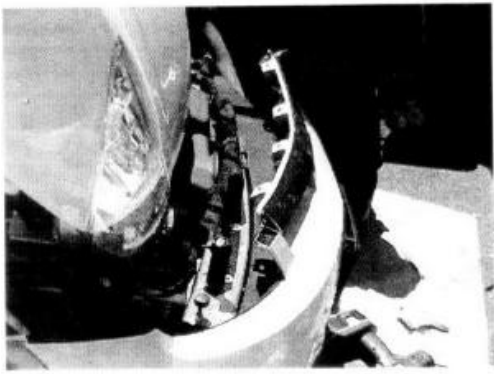
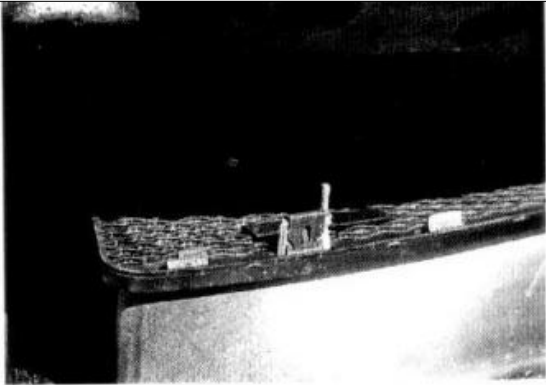


Figure 4

4	Center the billet grille into the center bumper pocket and mark and drill the mounting holes.	
---	---	--

5	Gently rock the front fascia forward to gain access to the backside. Figure 5.	
---	--	--

The instruction here is for your reference only. You may need to bend the billet grille bars or tabs a little bit to adjust to fit. We strongly recommend the professional installer for best result. Please use masking tape and tape the OEM grille shell along the edge to protect your vehicle during installation. We are not responsible for any damage caused by the installation. Thank you for choosing our product!

Part#	GR19FGF19A	Application	07~09 Saturn Sky (Not For Turbo) – Low Bumper Billet Grille
6	Re-center the billet grille into the bumper opening.		
7	Place the powder coated brackets over the fully threaded studs and hold in place using the k-lock nuts. Figure 6.		
			
8	Secure all hardware.		
9	<i>Reinstall the front fascia using the hardware saved from steps 1 & 2.</i>		
10	Installation completed!!!	N/A	

The instruction here is for your reference only. You may need to bend the billet grille bars or tabs a little bit to adjust to fit. We strongly recommend the professional installer for best result. Please use masking tape and tape the OEM grille shell along the edge to protect your vehicle during installation. We are not responsible for any damage caused by the installation. Thank you for choosing our product!