



# PATENT PRODUCT

## Grille Installation Instruction

Rev. Date 120201

<b>Part#</b>	GR18HFC00A	11- On Chrysler 300 / 300C Main upper
--------------	------------	---------------------------------------

	Item	Part Name	QTY	Description	Item	Part Name	QTY	Description
<b>Parts List</b>	1	Billet Grille insert	1	23 billet s	3	Phillip Screws	2	10#×1"
	2	Phillip Screws	2	10#×3/4"	4	Flat Nuts	4	10#

**Install Notes:** Overlay  Replacement  Drill  Cut

### Installation

Step 1 Identify the grille insert & hardware with parts list



Step 2-1: Pop hood. Remove 8 clips on the Plastic Cover



Step2-2: Remove 2 clips on side Fender Well

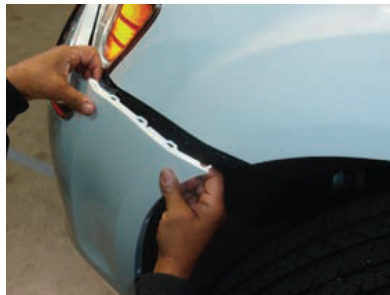
Step 2:  
Remove the front Bumper



Step 2-3: Remove 10mm Bolt on the inner Fender



Step 2-4: Remove 7 Screws from Underneath of the Factory Front Bumper

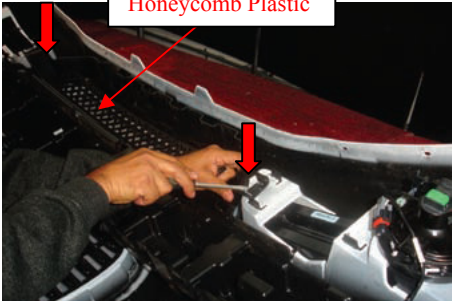

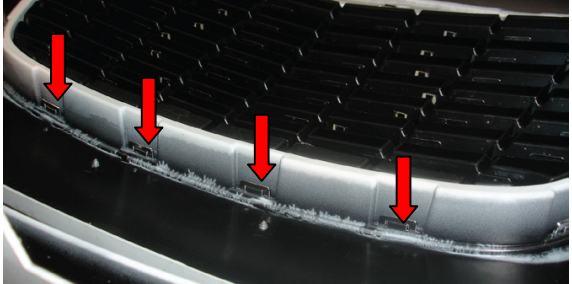



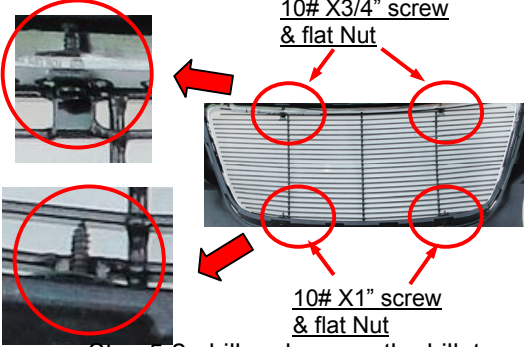


Step 2-5: Pull Side Fender outward to Unclip.

Step2-6: Remove front bumper and unclip the Electric Wire from the Fog Lights.

The instruction here is for your reference only. You may need to bend the grille a little bit to adjust to fit. We strongly recommend the professional installer for best result. We are not responsible for any damage caused by the installation. Thank you for choosing our product!

Part#	GR18HFC00A	11- On Chrysler 300 / 300C Main upper
-------	------------	---------------------------------------

<p>Step 3: Remove the OEM grille shell from front bumper.</p>	 <p>Step 3-1: Remove 2 Clips on the Bumper Support and remove the honeycomb plastic.</p>	 <p>Step 3-2: Remove 2 Screws on the corners of the Grille Shell</p>
	 <p>Step 3-3: Remove 11 Clips around the Grille Shell</p>	<p>Step 3-4: Remove OEM Grille from the front bumper</p>
<p>Step 4: Separate the chrome frame &amp; factory grille.</p>	 <p>Step 4-1: Unclip the Factory Grille from around the Chrome Frame</p>	 <p>Step 4-2: separate the chrome frame &amp; the factory grille</p>
<p>Step 5: Billet grille installation</p>	 <p>Step 5-1: Insert the billet grille to the chrome frame from front side</p>	 <p>Step 5-2: drill and secure the billet grille to the chrome frame</p>

The instruction here is for your reference only. You may need to bend the grille a little bit to adjust to fit. We strongly recommend the professional installer for best result. We are not responsible for any damage caused by the installation. Thank you for choosing our product!

Part#	GR18HFC00A	11- On Chrysler 300 / 300C Main upper
-------	------------	---------------------------------------

Step 6:  
Re-install the chrome frame to the front bumper with billet grille insert.



Step 7: Re-install the front bumper to the vehicle.

Installation completed!!



The instruction here is for your reference only. You may need to bend the grille a little bit to adjust to fit. We strongly recommend the professional installer for best result. We are not responsible for any damage caused by the installation. Thank you for choosing our product!