



PATENT PRODUCT Grille Installation Instruction

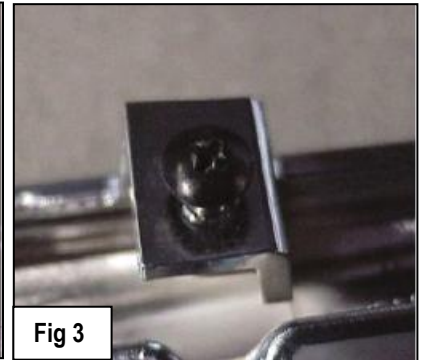
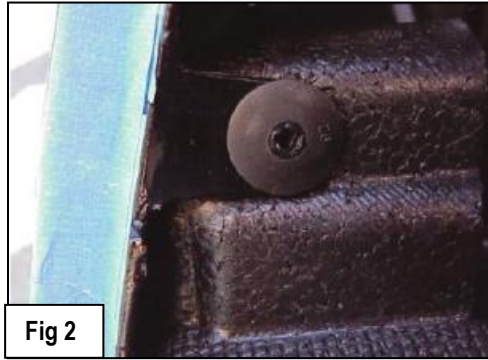
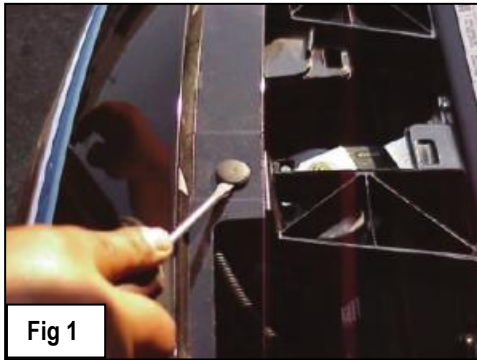
Rev. 20220101

Part#	R85300C&J&S	Application	For 2005-2010 Chrysler 300 /300C
--------------	-------------	--------------------	----------------------------------

	Item	Part Name	QTY	Description	Item	Part Name	QTY	Description
Parts List	#1	Billet Grille	1	Stainless Steel	#3	Truss Socket Tapping Screws	4	8×1"
	#2	U-Clip Nuts	4	8#				

Install Notes: Overlay Replacement Drill Cut

Step	Description	illustration
1	Identify the grille & hardware with parts list.	
2	Remove the (2) black plastic filler panels, from the core support.	
3	Next remove the plastic pins that secure the upper portion of the factory grille shell. Use a flat head screw driver to do this. Now from the backside of the grille shell remove the (2) plastic screws that hold the front fascia to the black foam, there is one on both lower sides of the grille shell, (Figs 1 & 2) .	
4	Next remove the (4) screws that hold the upper portion of the factory grille to the shell, these are located on the backside of the grille shell, (Fig 3) .	



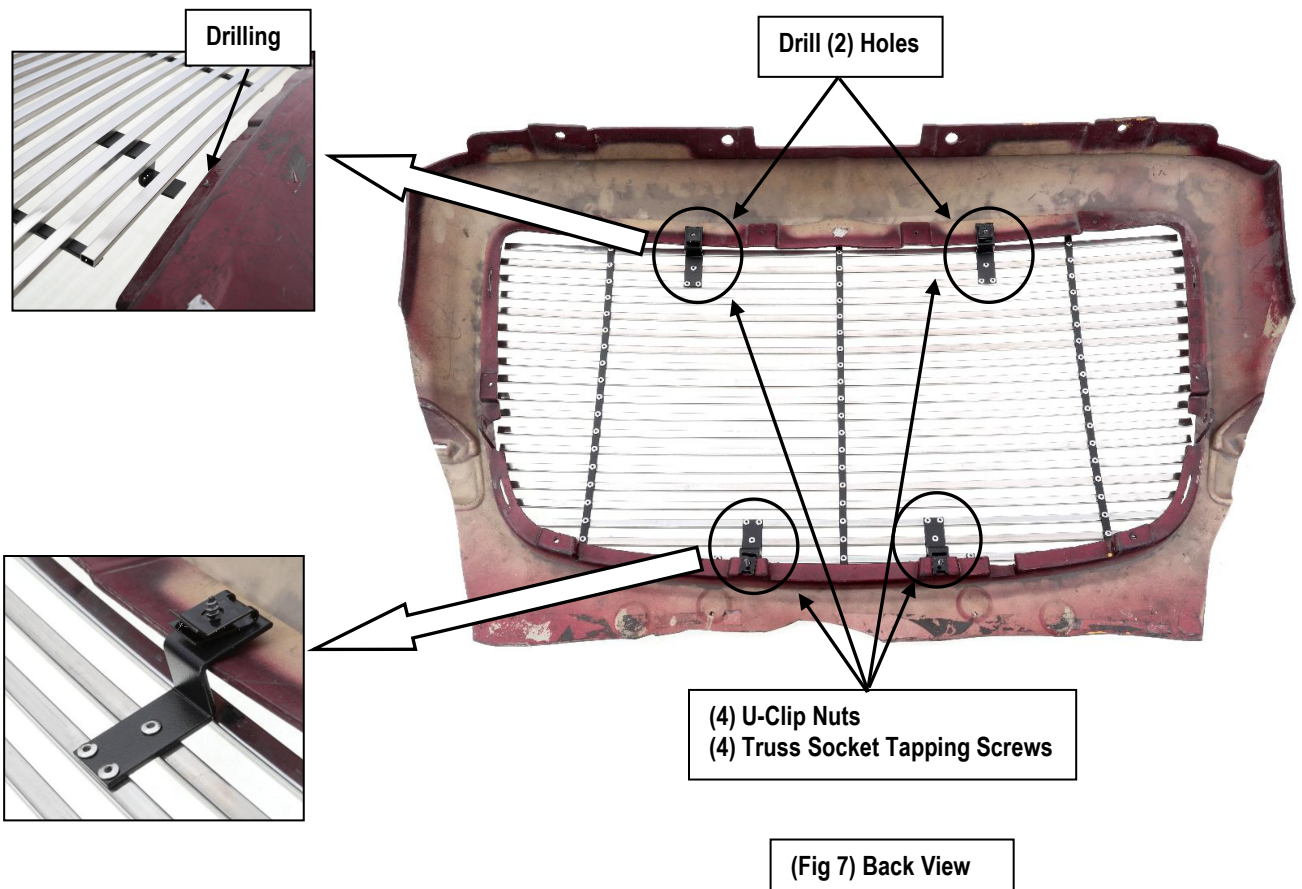
5	Unsnap the plastic clips that hold the grille shell into the front fascia.
6	Next remove one push pin from each of the front fender areas, to gain access behind the fender, and remove the bolt that attaches the front fascia to the fender. This will allow you to pull the front fascia back far enough to access the reaming (4) screws that attach the lower portion of the grille shell to the fascia, (Figs 5 & 6) .

The instruction here is for your reference only. We strongly recommend the professional installer for best result. We are not responsible for any damage caused by the installation. Thank you for choosing our product!

Part#	R85300C&J&S	Application	For 2005-2010 Chrysler 300 /300C
--------------	-------------	--------------------	----------------------------------



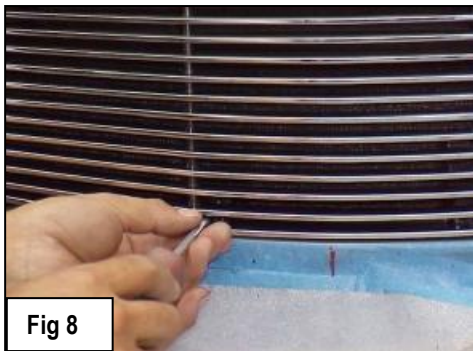
- 7 Hold the billet grille against the OEM grille shell, center and mark (2) holes for drilling. Remove billet grille and drill holes according to your mark.



The instruction here is for your reference only. We strongly recommend the professional installer for best result. We are not responsible for any damage caused by the installation. Thank you for choosing our product!

Part#	R85300C&J&S	Application	For 2005-2010 Chrysler 300 /300C
--------------	-------------	--------------------	----------------------------------

8	Place the U-Clip Nuts over the plastic lip of the lower section of the grille opening. Place the billet grille into the grille opening of the vehicle.
9	Attach the lower section of the billet grille to the vehicle, using the Truss Socket Tapping Screw secure to the lower lip where the U-Clip Nuts where placed in Step 8, (Fig 7 & 8).
10	Place the emblem onto the billet grille and secure the emblem to the grille and to the vehicle from the back side of the billet grille, (Fig 9).



11	Installation completed.	
-----------	-------------------------	--

The instruction here is for your reference only. We strongly recommend the professional installer for best result. We are not responsible for any damage caused by the installation. Thank you for choosing our product!