


Part#	GR18HEC00A/H	Application	<b>For 2005-2010 Chrysler 300 /300C Main Upper</b>
-------	--------------	-------------	--

Parts List	Item	Part Name	QTY	Description	Item	Part Name	QTY	Description
	1	Billet Grille	1	Aluminum	4	Keq Nuts	4	1/4" -20
	2	L Brackets	4		5	U-Clip Nuts	2	8#
	3	Button Head Screws	4	1/4"-20x1 1/2"	6	Truss Socket Tapping Screws	2	8x1"

Install Notes: Overlay  Replacement  Drill  Cut

Step	Description	illustration
------	-------------	--------------

1	Identify the grille & hardware with parts list.	
---	---	--

2	Remove the two black plastic filler panels, from the core support.	
---	--	--

3	Next remove the plastic pins that secure the upper portion of the factory grille shell. Use a flat head screw driver to do this. Now from the backside of the grille shell remove the two plastic screws that hold the front fascia to the black foam, there is one on both lower sides of the grille shell. See figure 1 &2.	
---	---	--

4	Next remove the four screws that hold the upper portion of the factory grille to the shell, these are located on the backside of the grille shell. See figure 3.	
---	--	--

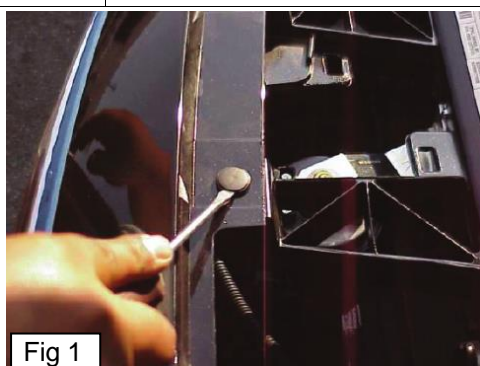


Fig 1

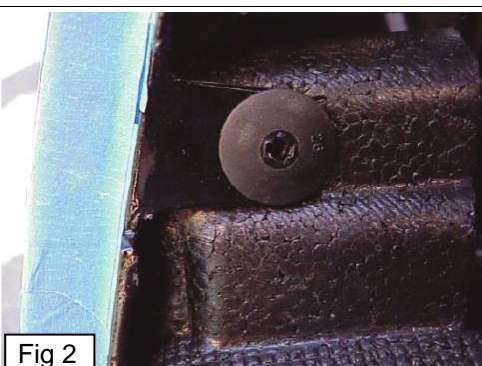


Fig 2

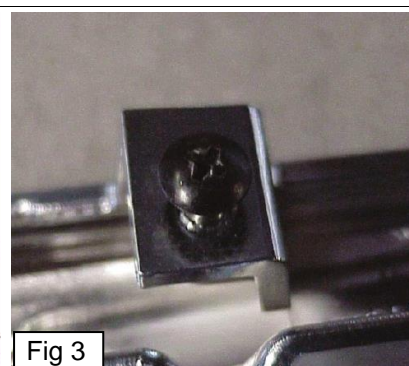


Fig 3

5	Unsnap the plastic clips that hold the grille shell into the front fascia.	
---	--	--

The instruction here is for your reference only. You may need to bend the billet grille bars or tabs a little bit to adjust to fit. We strongly recommend the professional installer for best result. Please use masking tape and tape the OEM grille shell along the edge to protect your vehicle during installation. We are not responsible for any damage caused by the installation. Thank you for choosing our product!

Part#	GR18HEC00A/H	Application	<b>For 2005-2010 Chrysler 300 /300C Main Upper</b>
-------	--------------	-------------	--

6 Next remove one push pin from each of the front fender areas, to gain access behind the fender, and remove the bolt that attaches the front fascia to the fender. This will allow you to pull the front fascia back far enough to access the reaming four screws that attach the lower portion of the grille shell to the fascia. See figure 5&6.

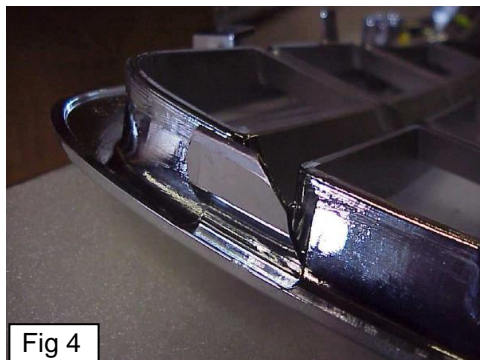


Fig 4



Fig 5

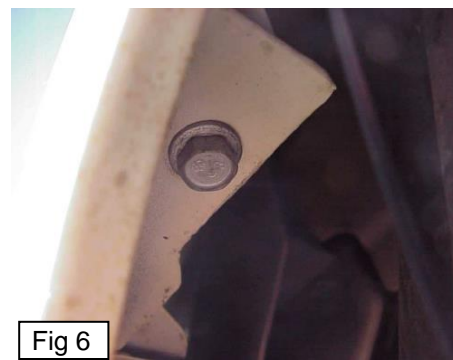


Fig 6

7 Tape off the grille shell with a light masking tape, to avoid scratching grille shell emblem. See figure 7.

8 Once you have taped the surface of the grille shell, you are now ready to make your first cut. Your first cut should be made as shown in figure 8. Cut a straight line on the outer edge even with the inner section of the grille shell. You want to cut the Chrysler emblem away from the grille shell. Next cut out the vertical bars in the grille shell, be careful not to cut into the chrome. Remember always cut less, you can always cut more if needed. You can now discard everything but the Chrysler grille shell emblem. You will re-install after billet grille has been installed. Also in figure 9 you will notice that the back side of the emblem has a small lip that protrudes out of the emblem grind this down slightly. This will allow the emblem to sit flush against the billet grille. Be careful not to cut too much or the billet grille will not secure to the billet.



Fig 7



Fig 8

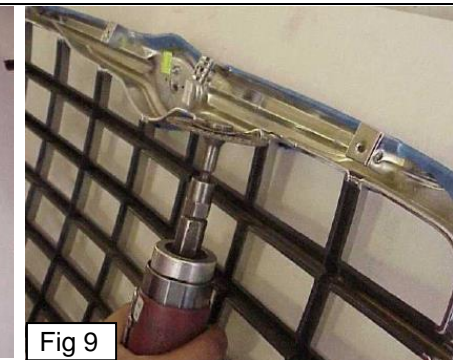


Fig 9

**You must follow this step to retain the Chrysler Logo from the grille shell**

9 (Optional) The small lip around the vehicle grille opening, can be spray painted black to conceal the lip. You must take all precautions, if doing this step to avoid overspray on the vehicle. See figure 15.

10 Now you must cut the small lip shown in figure 10&11 .This must be done so the billet grille will sit flush against the opening. Take extra caution in doing this step, so you will not scratch the vehicle.

11 Attach each of the L brackets to the top of the billet grille. To identify which L bracket goes where, place the Chrysler emblem up to the top of the billet grille. The L brackets will line up with the holes on the emblem. The L bracket will bend toward the vehicle. See figure 12.

The instruction here is for your reference only. You may need to bend the billet grille bars or tabs a little bit to adjust to fit. We strongly recommend the professional installer for best result. Please use masking tape and tape the OEM grille shell along the edge to protect your vehicle during installation. We are not responsible for any damage caused by the installation. Thank you for choosing our product!

Part#	GR18HEC00A/H	Application	For 2005-2010 Chrysler 300 /300C Main Upper
12	Place the speed clips over the plastic lip of the lower section of the grille opening. See figure 8. Place the billet grille into the grille opening of the vehicle.		
12	Attach the lower section of the billet grille to the vehicle, using the two #8 screws secure to the lower lip where the speed clips were placed in step 12. See figure 13.		
13	Place the emblem onto the billet grille and secure the emblem to the grille and to the vehicle from the back side of the billet grille. See figure 14.		
14	Installation completed!!!		

The instruction here is for your reference only. You may need to bend the billet grille bars or tabs a little bit to adjust to fit. We strongly recommend the professional installer for best result. Please use masking tape and tape the OEM grille shell along the edge to protect your vehicle during installation. We are not responsible for any damage caused by the installation. Thank you for choosing our product!