

<b>Part#</b>	<b>GR18GFC00R</b>	<b>11- On Chrysler 300 / 300C Main upper</b>
--------------	-------------------	----------------------------------------------

Parts List	Item	Part Name	QTY	Description	Item	Part Name	QTY	Description
	1	Mesh Grille	1	Stainless steel	4	Lock Nuts	4	6-32
2	Screws	4	8#×3/4"	5	Flat Washers	4	Φ25×Φ5×1	
3	Flat Nuts	4	8#	6				

Install Notes: Overlay  Replacement  Drill  Cut

## Installation

Step 1 Identify the grille insert & hardware with parts list

N/A



Step 2-1: Pop hood. Remove 8 clips on the Plastic Cover



Step2-2: Remove 2 clips on side Fender Well

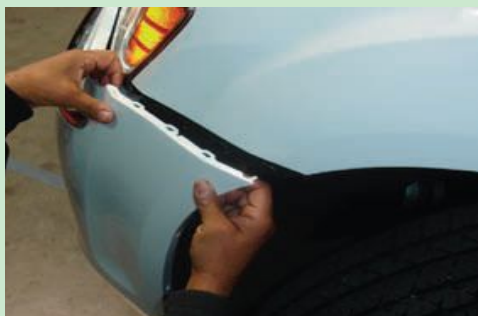
Step 2:  
Factory Grille  
Shell Removal



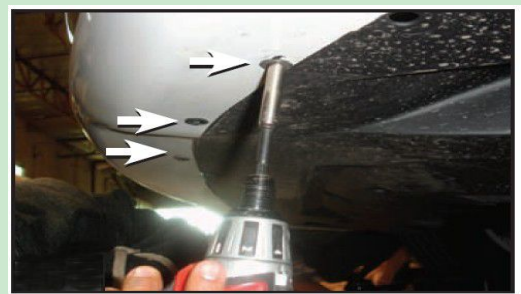
Step 2-3: Remove 10mm Bolt on the inner Fender



Step 2-4: Remove 7 Screws from Underneath of the Factory Front Bumper



Step 2-5: Pull Side Fender outward to Unclip.



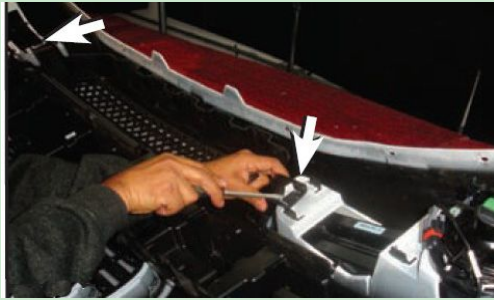
Step2-6: Remove 8 (7mm) Screws from Underneath the Factory Grille Shell.

Step2-7:Remove Grille Shell and unclips the Electric Wire from the Fog Lights.

The instruction here is for your reference only. You may need to bend the billet grille bars or tabs a little bit to adjust to fit. We strongly recommend the professional installer for best result.  
 Please use masking tape and tape the OEM grille shell along the edge to protect your vehicle during installation.  
 We are not responsible for any damage caused by the installation. Thank you for choosing our product!

Part#	GR18GFC00R	11- On Chrysler 300 / 300C Main upper
-------	------------	---------------------------------------

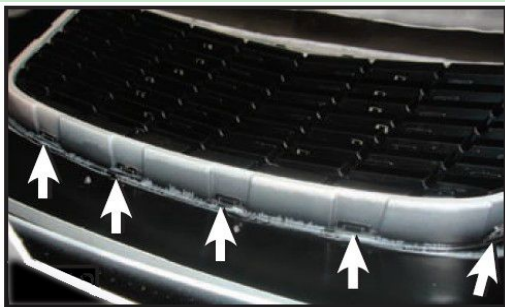
Step 3:  
Factory Grille  
Removal



Step3-1: Remove 2 Clips on the Bumper Support.



Step3-2:Remove 2 Screws on the corners of the Grille Shell.



Step3-3:Remove 11 Clips around the Grille Shell.

Step3-4:Remove Factory Grille.(grille will come out forward)

Step 4: Grille  
Installation



Step4-1:Unclip the Factory Grille from around the Chrome Frame.



Step4-2:Unclip the Chrysler Logo.





Step4-3:Place Mesh Grille over the Factory Grille Shell.



Step4-3:Insert Fender Flat washers along the top of the Screws on the mesh Grille,Tight with Lock Nuts.

The instruction here is for your reference only. You may need to bend the billet grille bars or tabs a little bit to adjust to fit. We strongly recommend the professional installer for best result. Please use masking tape and tape the OEM grille shell along the edge to protect your vehicle during installation. We are not responsible for any damage caused by the installation. Thank you for choosing our product!

Part#	GR18GFC00R	11- On Chrysler 300 / 300C Main upper
	 <p><u>Step4-4: Drill a 3/16 Hole through the Brackets on the side and bottom of the Mesh Grill.</u></p>	 <p><u>Step4-5: Place a #8 Flat Nut on the outer edge on the bracket and thread with a #8 Screw.</u></p>
	<p><u>Step4-6: Re-Assemble Bumper Support, Clips and bolts.</u></p>	
Installation Completed!!	N/A	

The instruction here is for your reference only. You may need to bend the billet grille bars or tabs a little bit to adjust to fit. We strongly recommend the professional installer for best result.  
 Please use masking tape and tape the OEM grille shell along the edge to protect your vehicle during installation.  
 We are not responsible for any damage caused by the installation. Thank you for choosing our product!