


Part#	GR14HEE43A	Application	05~07 Nissan Pathfinder / 05~08 Frontier (1pc) – Billet Grille					
Parts List	Item	Part Name	QTY	Description	Item	Part Name	QTY	Description
	1	Billet Grille	1	Aluminum	4	Flat tabs	4	
	2	“Z” tabs	2		5	1/4-20UNC × 3/4” Bolts	6	
	3	“L” tabs	2		6	1/4-20 Nuts	6	
Install Notes: Overlay <input type="checkbox"/> Replacement <input checked="" type="checkbox"/> Drill <input type="checkbox"/> Cut <input checked="" type="checkbox"/>								
Step	Description			illustration				
1	Identify the grille & hardware with parts list.							
2	Remove the factory grille by removing the push clips along the top edge of the grille. There is one clip in each corner of the grille that goes through the face of the grille. Release them one at a time by turning them 1/4 turn clockwise and pulling straight out on the grille.							
3	After you have release all of the clips in step 1, the lower edge of the grille will still be attached. Lift up on the underside of each mounting tab one at a time and pull the grille straight out until it has been completely removed.							
4	Cut off the two alignment tabs on the front side of the bottom edge of the grille mounting flange and sand them down flush. See photo 1.							
5	On the backside of the bumper (look down on the bumper from directly overhead) there is a small mounting tab with a Phillips head mounting clip to the right side of center. Cut a small notch out of the right side of the tab to make clearance for a mounting bolt. See photo 2.							
6	Align the lower mounting tabs of the grille with the slots in the factory grille mounting flange and carefully push the grille all the way back into the hole.							
7	Loosely attach the two small “L” brackets to the lower mounting tabs with two of the supplied nuts and bolts as shown on photo 3.							
8	Install the two “Z” brackets on the top of the radiator core support usign two of the factory holes. See photo 4.							
9	Attach the top mounting tabs to the “Z” brackets as shown in photo 4. Use the small square tabs in the hardware kit as shims to level the grille if necessary. If they are used, place tehmm between the “Z” bracket and the upper mounting tab of the grille.							

The instruction here is for your reference only. You may need to bend the billet grille bars or tabs a little bit to adjust to fit. We strongly recommend the professional installer for best result. Please use masking tape and tape the OEM grille shell along the edge to protect your vehicle during installation. We are not responsible for any damage caused by the installation. Thank you for choosing our product!

Part#	GR14HEE43A	Application	05~07 Nissan Pathfinder / 05~08 Frontier (1pc) – Billet Grille
10	Secure all mounting hardware. Close the hood gently the first time to be sure that the grille does not interfere with it closing properly.		
11	Make sure the billet grille is centered and tighten the fasteners.	N/A	
12	Installation completed!!!	N/A	

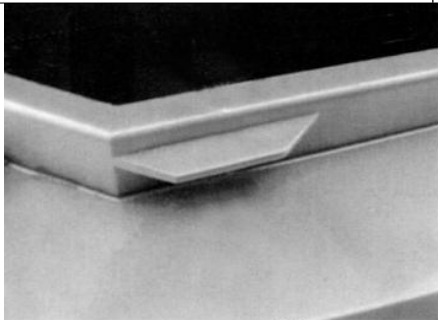


Photo 1

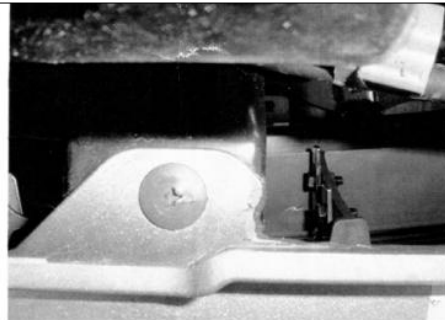


Photo 2



Photo 3



Photo 4

The instruction here is for your reference only. You may need to bend the billet grille bars or tabs a little bit to adjust to fit. We strongly recommend the professional installer for best result. Please use masking tape and tape the OEM grille shell along the edge to protect your vehicle during installation. We are not responsible for any damage caused by the installation. Thank you for choosing our product!