


| | | | |
|--------------|--------------|--------------------|--|
| Part# | GR12HEJ76A/H | Application | For 1998-2002 Lincoln Navigator |
|--------------|--------------|--------------------|--|

| Parts List | Item | Part Name | QTY | Description | Item | Part Name | QTY | Description |
|-------------------|------|---------------|-----|-------------|------|-----------------------------|-----|-------------|
| | 1 | Billet Grille | 1 | Aluminum | 4 | Truss Head Tapping Screws | 2 | 8×3/4" |
| | 2 | L Shape Tabs | 4 | | 5 | U-Clip Nuts | 8 | 8# |
| | 3 | Flat Tabs | 2 | | 6 | Truss Socket Tapping Screws | 4 | 10×3/4" |

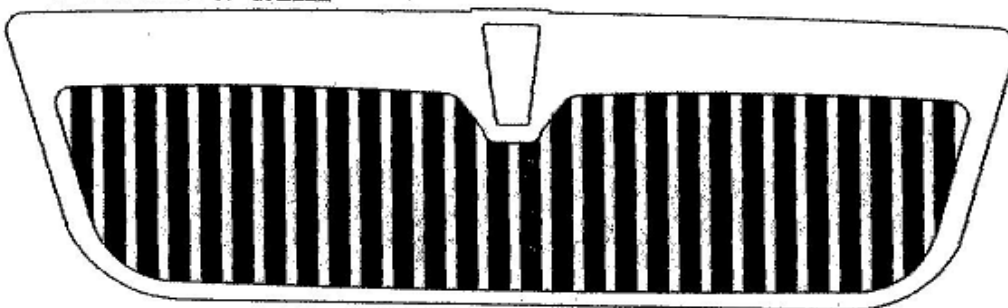
Install Notes: Overlay Replacement Drill Cut

| Step | Description | illustration |
|-------------|--|--|
| 1 | Identify the grille & hardware with parts list. |  |
| 2 | Open the hood and take off the five nuts retaining the grille shell and the bolts retaining the grille shell reinforcement. Remove the assembly from the vehicle. | |
| 3 | Take out the four screws on the bottom of the shell and remove the reinforcement from the shell. | |
| 4 | Mask the front chrome area of the shell with tape to protect it from scratches. | |
| 5 | With a hacksaw blade and handle carefully saw the vertical bars from the shell making sure not to cut into the edge of the rim. | |
| 6 | Sand the trimmed edge with 80 grit sandpaper and switch to 150 or 180. | |
| 7 | Remove the two outer factory clips from the steel reinforcement. | |
| 8 | Attach U-clip nuts to each end of two of the aluminum L-tabs as per illustration. | |
| 9 | Reinstall the two middle bottom factory screws that hold the reinforcement to the shell. | |
| 10 | Reinstall the outer two bottom factory screws through the shell and reinforcement and into the L-tab as shown in the illustration. | |
| 11 | Attach the remaining clips to the remaining tabs in the installation kit as per illustration. | |
| 12 | Center the billet grilles insert in the grille shell and attach the bottom two welded tabs to the attachment tabs as shown using the counter-sunk screws and spacers provided. | |
| 13 | Attach the remaining L-tabs to the upper welded billet grille tabs as per illustration and mark the shell where remaining attachment points need to be. Drill with a 1/8" drill bit. | |
| 14 | Remove the billet insert from the shell and paint the sanded area semi-gloss black or black texture coat. | |
| 15 | Reattach the billet grille insert with the wafer head and counter-sunk screws as per illustration. | |

The instruction here is for your reference only. You may need to bend the grille a little bit to adjust to fit. We strongly recommend the professional installer for best result. We are not responsible for any damage caused by the installation. Thank you for choosing our product!

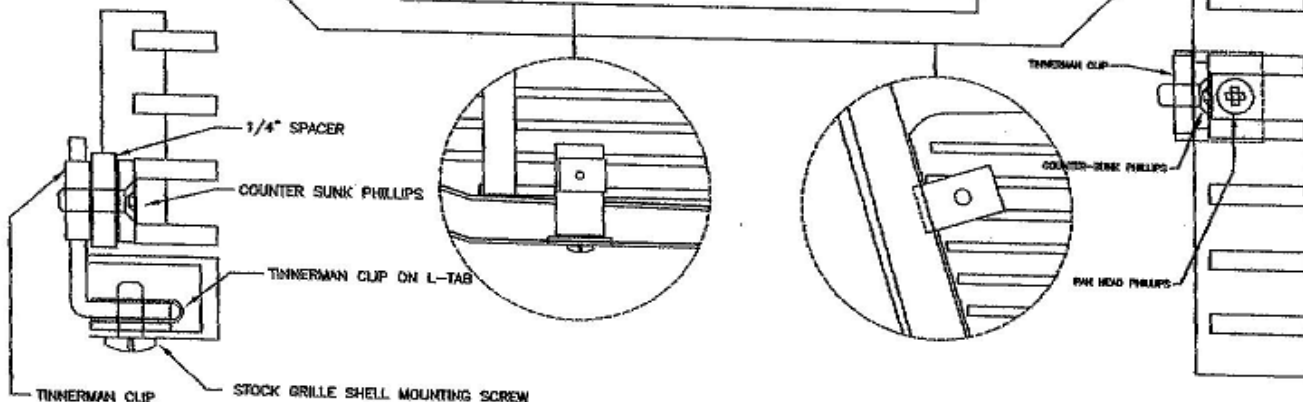
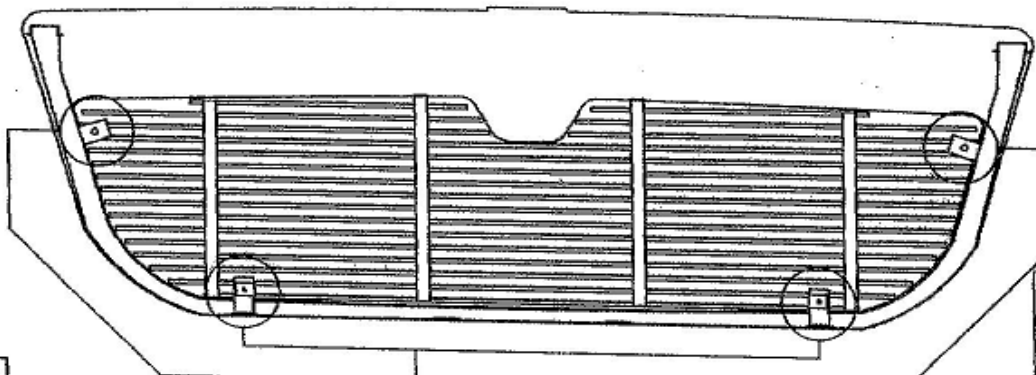
| | | | |
|-------|--------------|-------------|---------------------------------|
| Part# | GR12HEJ76A/H | Application | For 1998-2002 Lincoln Navigator |
|-------|--------------|-------------|---------------------------------|

FRONT SIDE OF GRILLE



CUT OUT FACTORY VERTICAL SLATS

BACKSIDE OF GRILLE



The instruction here is for your reference only. You may need to bend the grille a little bit to adjust to fit. We strongly recommend the professional installer for best result. We are not responsible for any damage caused by the installation. Thank you for choosing our product!