



PATENT PRODUCT


Grille Installation Instruction

Rev. 150116

Part#	GR12HEJ18C	<i>Application</i>	For 2005-2006 Lincoln Navigator
--------------	-------------------	--------------------	--

	Item	Part Name	QTY	Description	Item	Part Name	QTY	Description
Parts List	1	Billet Grille	2	Stainless steel	3	Truss Socket Tapping Screws	8	8#×1"
	2	U Shape Tabs	2		4	U-Clip Nuts	10	8#

Install Notes: Overlay Replacement Drill Cut

Step	Description	illustration
1	Identify the grille & hardware with parts list.	
2	Tape off the area around the bumper opening, to protect the vehicle from being scratched during the install.	
3	Using a body saw you will need to cut out the horizontal, and the vertical section of the bumper factory bumper. See figure 1&2. The results are shown in figure 3. Use caution when cutting out the plastic section near the ends of the bumper opening.	
4	Once the bumper section has been cut out, you may use a flat file or sandpaper to file or smooth down the rough cut.	
5	Next the place the U-clip nuts over the two brackets as seen in figure 4.	
6	Now place the upper billet grille into the opening of the bumper, center the billet, then place the brackets, with the leg of the brackets facing you, through the lower section of the bumper and secure to the upper billet using the #8 screw. See figure 5.	
7	Next secure the lower portion of the bumper grille following (6).	
8	Now drill a small pilot hole into the plastic portion of the bumper opening, using the tab on the billet grille as a template. Secure using the #8 screws.	
9	Make sure the billet grille is centered and tighten the fasteners.	
10	Installation completed!!!	

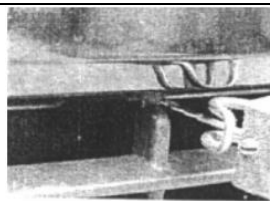


Figure 1



Figure 2

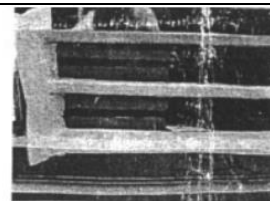


Figure 3

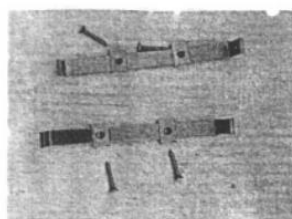


Figure 4



Figure 5

The instruction here is for your reference only. You may need to bend the billet grille bars or tabs a little bit to adjust to fit. We strongly recommend the professional installer for best result.
 Please use masking tape and tape the OEM grille shell along the edge to protect your vehicle during installation.
 We are not responsible for any damage caused by the installation. Thank you for choosing our product!