

PN: GR12FEB27A
07-10 Lincoln Mlx Lower Bumper

| | |
|--|----------------------|
| Hardware | |
| 4 -- 10#-24UNC×2" Fully Threaded Studs | 4--10-24 K-Lock Nuts |
| 4 -- Powder Coated Flat Brackets | |

NOTE: Instruction for billet grille also applies to stainless steel grille.

- (1) Remove the bolts and plastic clips that hold the front fascia to the vehicle. Figures 1&2



Figure 1



Figure 2

- (2) Remove the small bolts from the edge of the wheel well. Figures 3&4



Figure 3



Figure 4

- (3) Separate the sides of the front fascia from the fender sides. Figure 5&6



Figure 5

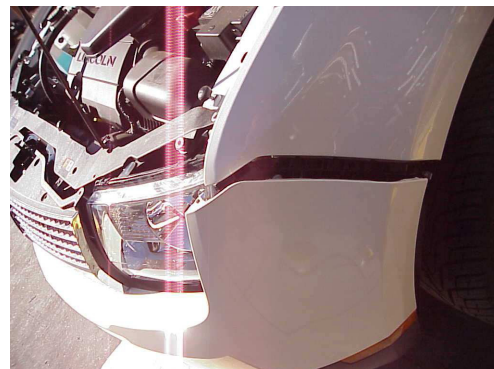
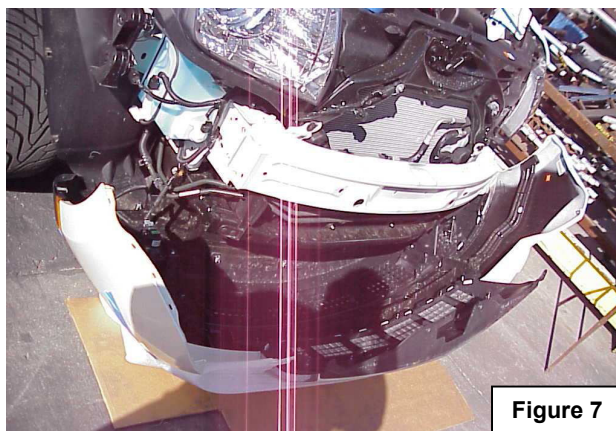
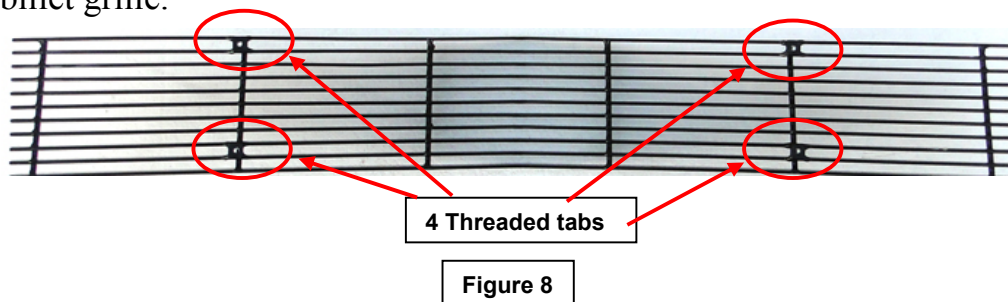


Figure 6

(4) Lay a blanket or other soft surface in front of the front fascia. Rock the entire front fascia forward and rest it on the blanket. Figure 7



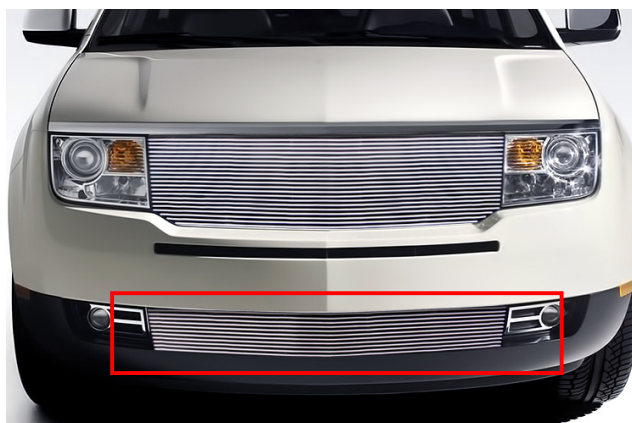
(5) Install the fully threaded studs into the threaded tabs on the backside of the billet grille.



(6) Center the billet grille into the bumper opening.

(7) Place the powder coated brackets over the fully threaded studs and secure using the k-lock nuts.

(8) Reattach the front fascia to the vehicle using the hardware from steps 1 and 2.



Installation is now complete!!!!

The instruction here is for your reference only. You may need to bend the billet grille bars or tabs a little bit to adjust to fit. We strongly recommend the professional installer for best result. We are not responsible for any damage caused by the installation. Thank you for choosing our product!