


Part#	GR08GFH03T	Application	<b>2009 Acura TSX Upper Mesh Grille</b>					
-------	------------	-------------	---	--	--	--	--	--

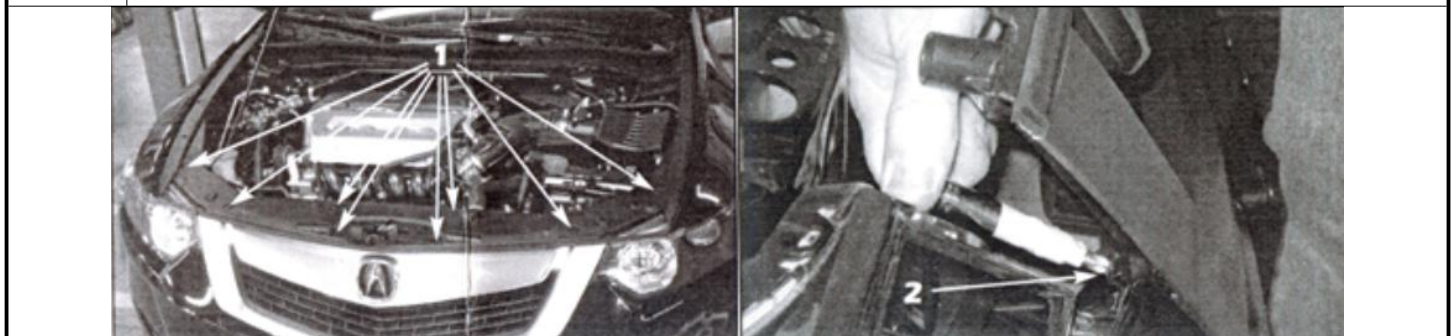
Parts List	Item	Part Name	QTY	Description	Item	Part Name	QTY	Description
	1	Mesh Grille	1	Stainless steel	4	3M Double Faced Tape	1	
	2	Black Washers	2		5	Emblem Mounting Plate	1	
	3	Hex Nuts	10	6-32	6	Powder Coated Emblem Mounting Plate	1	

Install Notes: Overlay  Replacement  Drill  Cut

Step	Description	illustration
------	-------------	--------------

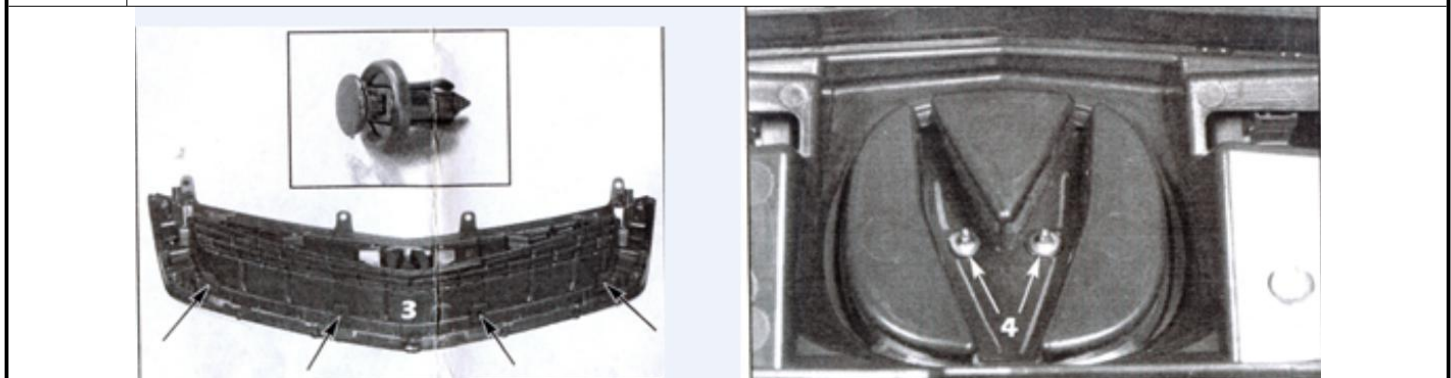
1	Identify the grille & hardware with parts list.	
---	---	--

2	Remove the radiator support cover by lifting straight up on the centers of the factory push pins to release them and remove the cover (to be reinstalled).	
---	--	--



3	Remove the side two phillips screws (one per side where shown).	
---	---	--

4	Use a small flat blade screwdriver to pry down on the center of the lower push pins, separating the grille from the bumper cover (grille shown removed to indicate the lower push pin locations).	
---	---	--



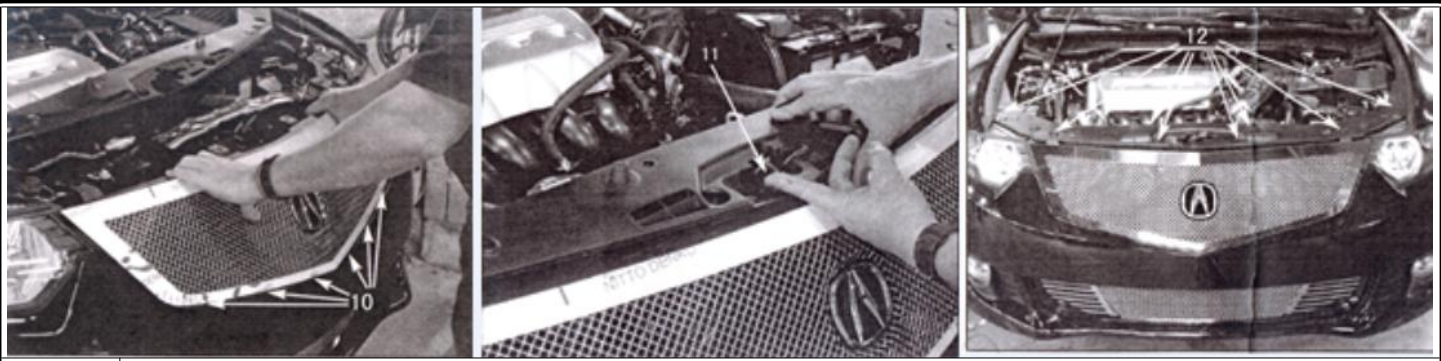
The instruction here is for your reference only. You may need to bend the billet grille bars or tabs a little bit to adjust to fit. We strongly recommend the professional installer for best result.

Please use masking tape and tape the OEM grille shell along the edge to protect your vehicle during installation.

We are not responsible for any damage caused by the installation. Thank you for choosing our product!

Part#	GR08GFH03T	Application	2009 Acura TSX Upper Mesh Grille
5	Remove the factory Acura emblem from the factory grille. The emblem is attached with push on retainers. Insert a small flat blade screwdriver under the retainer and twist to remove. Save the emblem for reinstallation on the mesh grille.		
6	Apply masking tape to the painted bumper cover at the grille openings.		
7	Tape the edges of the headlight assemblies that will be visible through the mesh grille and use a scotch brite pad to scuff the clear plastic lenses.		
8	Paint everything inside the grille opening with flat or semi-gloss black paint that would be visible through the mesh grille.		
9	Install the supplied double faced tape to the back of the factory emblem once it is clean.		
10	Align the emblem onto the supplied emblem mounting plate and press it firmly into place to set the tape.		
11	Install the supplied black washers and hex nuts to install the emblem mounting plate onto the mesh grille.		
12	Cut out and align the center hole location template onto the factory grille opening, making sure the template lines up with the shape of the bumper cover and tape it into place.		

The instruction here is for your reference only. You may need to bend the billet grille bars or tabs a little bit to adjust to fit. We strongly recommend the professional installer for best result. Please use masking tape and tape the OEM grille shell along the edge to protect your vehicle during installation. We are not responsible for any damage caused by the installation. Thank you for choosing our product!

Part#	GR08GFH03T	Application	2009 Acura TSX Upper Mesh Grille
			
13	Use a drill bit to drill holes through the bumper cover at the bottom corner were marked in the previous step. Once the holes are drilled, use the drill bit to carefully connect the holes making a mounting slot for the grille mounting studs.		
14	Carefully align the grille into the grille opening, making sure the bottom studs fit into the holes drilled in the bumper cover. <b>DO NOT LET THE GRILLE MOUNTING PINS SCRATCH THE BUMPER COVER!</b>		
15	Align the radiator support panel cover, making sure you lift up on the hood release latch and pass it through the cover.		
16	Reinstall the radiator support panel cover, reusing the factory hardware removed in Step1. The mesh grille top plate with fit between the cover and the core support, locking the grille into place.		
17	Installation completed!!!	N/A	

The instruction here is for your reference only. You may need to bend the billet grille bars or tabs a little bit to adjust to fit. We strongly recommend the professional installer for best result.  
 Please use masking tape and tape the OEM grille shell along the edge to protect your vehicle during installation.  
 We are not responsible for any damage caused by the installation. Thank you for choosing our product!