



# PATENT PRODUCT


## Grille Installation Instruction

Rev. 190601

<b>Part#</b>	<b>GR08FFE98 C/S/J</b>	<i>Application</i>	<b>For 2009-2011 Honda Pilot</b>
--------------	----------------------------	--------------------	----------------------------------

	Item	Part Name	QTY	Description	Item	Part Name	QTY	Description
<b>Parts List</b>	1	Billet Grille	1	Stainless steel	3	U- Clip Nuts	4	8#
	2	Flat Tabs	4		4	Truss Head Tapping Screws	4	8×1 1/4"

**Install Notes:** Overlay  Replacement  Drill  Cut

Step	Description	illustration
1	Identify the grille & hardware with parts list.	
2	Remove the plastic push-in clips retaining the trim panel around the hood latch area and remove it. See photo 1.	
3	Remove the 2 10mm hex head bolts retaining the top edge of the factory grille insert. See photo 2.	
4	Lean the grille forward, reach underneath the back side of the bottom edge of the grille and release the 5 plastic push-in clips (same as the ones on the top trim panel) with a short flat blade screwdriver. See photo 3.	
5	If you are installing the full bumper insert with no front license plate bracket remove the front license plate bracket (if equipped).	
6	With the upper grille removed you can easily access the backside of the bumper opening to secure the grille insert.	
7	Install the supplied tinnerman clips onto each of the supplied brackets, aligning the hole in the bracket with the hole in the clip, and the flat side of the clip on the black painted side of the bracket.	
8	Center the grille insert in the opening and secure it to the factory grille mesh using the supplied screws. The screws will go through the face of the grille, through the mounting bracket, through the factory grille, and into the brackets that you just assembled.	
9	There is a tab just above the center mounting bracket on the backside of the opening. Rotate the bracket horizontally before tightening and it will fit on the bottom side of the tab.	
10	Installation completed!!!	

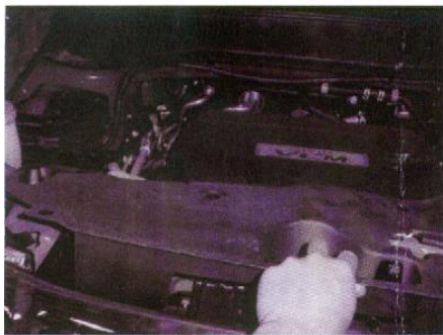


Photo 1

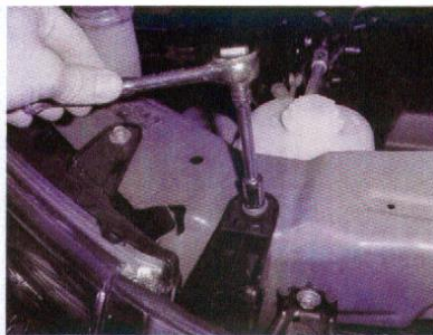


Photo 2

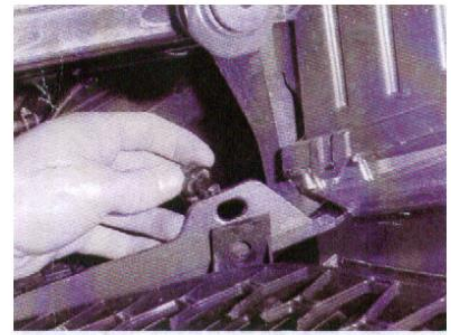


Photo 3

The instruction here is for your reference only. You may need to bend the grille a little bit to adjust to fit. We strongly recommend the professional installer for best result. We are not responsible for any damage caused by the installation. Thank you for choosing our product!