

PN: GR07GFG98T
03-06 GMC Sierra Lower Bumper

Hardware

8—6-32 K-Lock Nuts 2—Stainless V-Brackets 2—Speed Clips
1—Stainless L-Bracket 1—Stainless J-Bracket 2--#8 Screws
2—Stainless C-Brackets

- (1) Attach the two stainless v-brackets to the outer studs on each end using the K-Lock nuts (Fig 1)

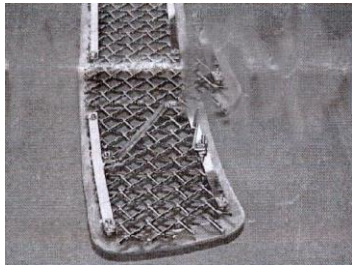


Figure 1

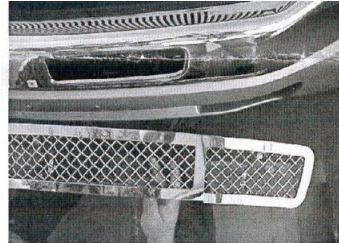


Figure 2

- (2) Install the stainless L-bracket to the lower center stud. Attach the short side to the wire mesh grille using a 6-32 k-Lock nut.
- (3) Attach the short side of the stainless J-bracket to the upper center stud on the wire mesh grille using a 6-32 k-lock nut.
- (4) If equipped remove the factory tow hooks and the plastic filler panel at the back of the bumper opening. These both must be removed to complete the installation.
- (5) With the notches in the wire mesh grille towards the bottom (Figure 2), center the wire mesh grille into the bumper opening and mark and drill the two center mounting holes.
- (6) Remove the k-lock nuts from the screws in the v-brackets and set aside as they will be reused later.
- (7) Center the wire mesh grille into the bumper opening.
- (8) Attach the center mounts to the vehicle using the speed clips and #8 screws.
- (9) Place the stainless c-brackets over the screws in the stainless L-brackets and hold in place using the k-lock nuts saved in step 6. The c-brackets opening face the front of the vehicle. (3)

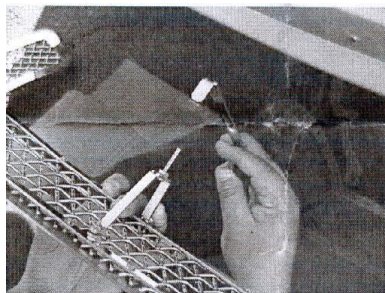


Figure 3

- (10) Place the stainless c-brackets over the screws in the stainless L-brackets and hold in place using the k-lock nuts saved in step6. The c-brackets opening face the front of the vehicle.(3)
- (11)Double check the alignment of the wire mesh grille in the bumper opening and secure all hardware.

The instruction here is for your reference only. You may need to bend the billet grille bars or tabs a little bit to adjust to fit. We strongly recommend the professional installer for best result. We are not responsible for any damage caused by the installation. Thank you for choosing our product!