
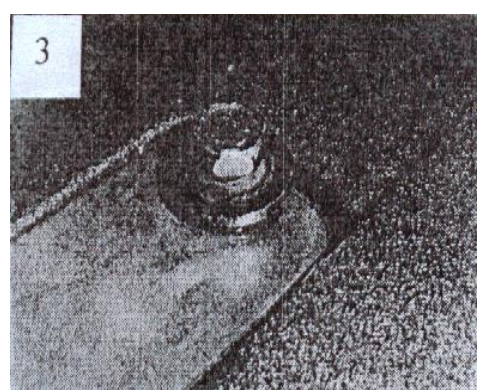
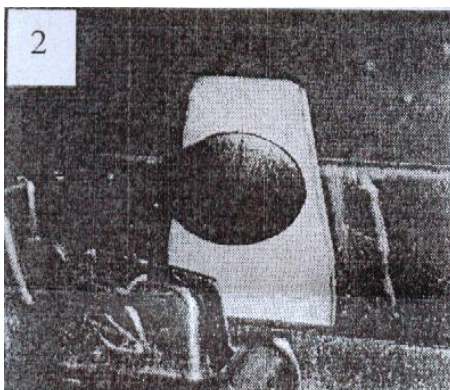
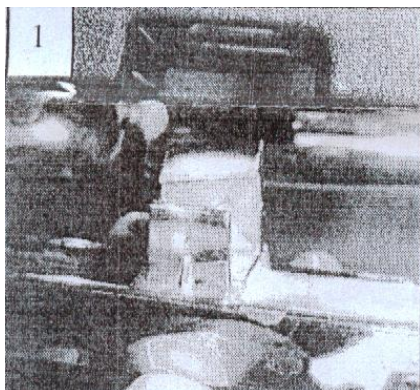


Part#	GR06IEB20A/H	Application	For 2009-2012 Ford Flex
-------	--------------	-------------	-------------------------

Parts List	Item	Part Name	QTY	Description	Item	Part Name	QTY	Description
	1	Billet Grille	1	Aluminum	2	Push in Clips	6	

Install Notes: Overlay Replacement Drill Cut

Step	Description	illustration
1	Identify the grille & hardware with parts list.	
2	Open the hood. Remove the factory clips and 10mm bolts on the upper plastic shroud. From the backside of the grille remove the nuts securing the factory ford logo. To remove the factory grille bars; using a flat end screwdriver; unclip the clips holding the top bar to the plastic backing (1). Repeat on the other bars.	
3	Install the grille. From the backside of the grille; place the push in clips into each of the lower brackets (2). Making sure that the grille is centered into the shell; install the screws into three factory locations (3). Install the last two provided push in clips into the center holes of the top plate. Reinstall the remaining factory clips to three factory locations.	



4	Reinstall the remaining factory clips to three factory locations.	
5	Installation completed!!!	

The instruction here is for your reference only. You may need to bend the billet grille bars or tabs a little bit to adjust to fit. We strongly recommend the professional installer for best result.
 Please use masking tape and tape the OEM grille shell along the edge to protect your vehicle during installation.
 We are not responsible for any damage caused by the installation. Thank you for choosing our product!