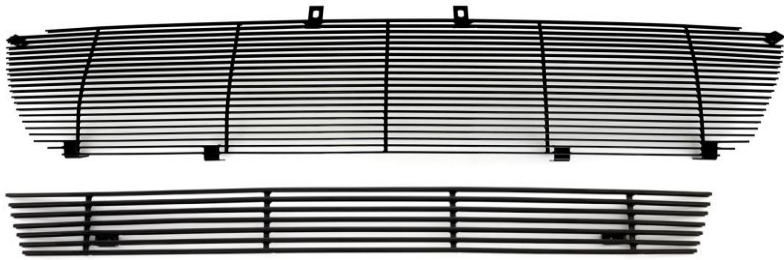


Part#	GR06HGI25J	Application	2006-2008 Ford F-150 (Not For FX2 Model)		
--------------	------------	--------------------	---	--	--

Parts List	Item	Part Name	QTY	Description	Item	Part Name	QTY	Description
	1	Billet Grille	2	Stainless steel	5	Truss Socket Tapping Screws	6	10×3/4"
	2	U- Clip Nuts	4	10#	6	Truss Socket Tapping Screws	2	8 × 1"
	3	U-Clip Nuts	2	8#	7	Flat Washers	2	Φ6.5/Φ12×1
	4	Hex Bolts	2	M6×25	8	Extension Brackets	2	

Install Notes: Overlay Replacement Drill Cut

Step	Description	illustration
1	Identify the grille & hardware with parts list.	
2	Open the hood to allow access to the rear of the bumper. Start with the upper piece. Remove the factory grille from the hood by removing the 4-10mm bolts and the 6-10mm nuts. You may want to mask off the chrome/painted area of the grille to protect it from scratching while you cut out the grille insert (as shown in photo#1).	
3	If you have the bar style grille, (shown) you will first want to remove the factory honeycomb before cutting out the grille. This just makes it easier to remove the cutouts. (As shown in photo#2) If you have the grille with no bars you can ignore this step and go onto the cut out portion of the install.	
4	Using a hacksaw blade and handle or a body saw cut out the grille first for the bars grille you will need to remove the center section as shown in photo#3.	
5	For the bars and the honeycomb style grille the rest of the cut is almost the same. Using a die grinder or cut off wheel, cut about 1/8" to 1/4" from the factory edge of the shell, as shown in photo#4. The grille should be facing up for this step. It will help you control you cut and see how close you are to the face of the shell.	
6	After you have cut all the way around the grille shell you will need to go back over it with a sander to make it flush and smooth. Use an angle sander or similar to get the smooth edge as shown in photo#5. You will want to leave the reveal on the grille this is what the billet grille will sit up flush against.	
7	Photo #6 is for the bar style grille install to get rid of the lumps left over on the shell you will need to carefully sand the lip of the grille shell down to match the lip of the grille shell the rest of the way around.	
8	Once the grille has been properly cut and sanded, as shown in photo#7, you are ready to insert the billet grille. Place the grille shell face down on a soft surface. Insert the billet grille from the backside.	
9	Making sure the grille is centered left to right, up and down, use the welded on tabs on the bottom of the billet grille as a guide, mark and drill these mounting points. On the two mounts towards the outside of the grille, make sure the grille shell is pulled up flush to the face of the billets before drilling these holes.	

The instruction here is for your reference only. You may need to bend the grille a little bit to adjust to fit. We strongly recommend the professional installer for best result. We are not responsible for any damage caused by the installation. Thank you for choosing our product!



Grille Installation Instruction

Rev. 200801

Part#	GR06HGI25J	Application	2006-2008 Ford F-150 (Not For FX2 Model)
10	Place a U-clip nut on each of the four welded tabs and attach with the Phillips screws provided.(As shown in photo#8)		
11	To install the shell back onto the truck you will need to pull gently on the billet grille to go behind the hood and the shell will install from the front side just as it came off the truck. Attach the shell to the hood using the 6-10mm nuts removed earlier.		
12	Attach the two plastic arms back into the factory mounting locations using the 4-10mm bolts that were removed earlier. Once those are in place you will need to push forward on the billet grille, mark the location of holes in the top outer welded tables of the billet grille, and either frill a pilot hole and secure with the two remaining screws provided or just use the screw to thread itself in using a cordless screwdriver.(As shown in photo#10)		
13	Continue to the lower piece. Insert the billet grille from the back side of the factory bumper opening. The picture shows how the extension brackets mounts to the bumper and billet.		
14	Center the billet grille into the opening of the factory grille shell. Secure the bolt to the threaded holes on the front of the grille. Be sure the bolts are through the OEM grille shell.		
15	Secure billet grille using the U- clip Nut from the back side of the OEM grille shell.		
16	Make sure the billet grille is centered and tighten the fasteners.but do not over-tighten.		
17	Reinstall the black plastic cover which was removed in step 2.		
18	Installation completed!!!		

The instruction here is for your reference only. You may need to bend the grille a little bit to adjust to fit. We strongly recommend the professional installer for best result. We are not responsible for any damage caused by the installation. Thank you for choosing our product!

Part#	GR06HGI25J	Application	2006-2008 Ford F-150 (Not For FX2 Model)
-------	------------	-------------	---



Photo #1



Photo #2



Photo #3

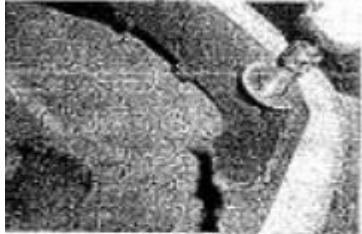


Photo #4

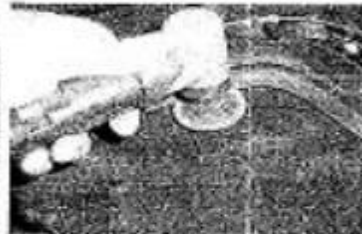
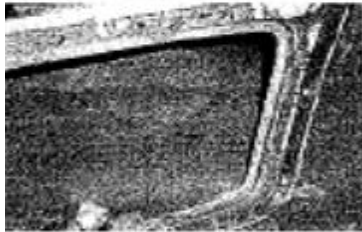


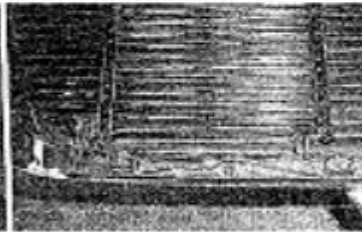
Photo #5



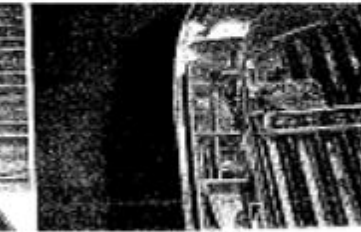
Photo #6



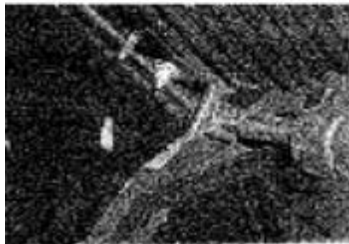
#7



#8



#9



#10

The instruction here is for your reference only. You may need to bend the grille a little bit to adjust to fit. We strongly recommend the professional installer for best result. We are not responsible for any damage caused by the installation. Thank you for choosing our product!