



PATENT PRODUCT

Grille Installation Instruction

Rev. 200601

Part#	GR06HFF14S	Application	For 2009-2014 Ford F-150 Not For Harley Davidson And Raptor
--------------	------------	--------------------	---

Parts List	Item	Part Name	QTY	Description	Item	Part Name	QTY	Description
	1	Billet Grille	2	Stainless steel	6	Flange Brackets	2	2"
	2	U-Clip Nuts	2	8#	7	Truss Socket Tapping Screws	2	8#x1"
	3	Screw	6	10#	8	Lock nut	2	6#
	4	Flat Nut	6	10#	9	Flange Brackets	2	/
	5	M-Screw	2	6#x1 1/2"				

Install Notes: Overlay Replacement Drill Cut

Step	Description	illustration
1	Identify the grille & hardware with parts list.	

Start from the upper piece. Remove 6 Bolts along the top of the Grille Shell.(Fig.1) Remove 2 Clips along the Vehicle Support Bar.(Fig.2) Place the Plastic Pry-bar in between the Grille Shell and Hood ,Firmly start nudging away the Grill Shell from the Hood.(the Grille Shell is latched on with Clips).(Fig.3)

2			
---	--	--	--

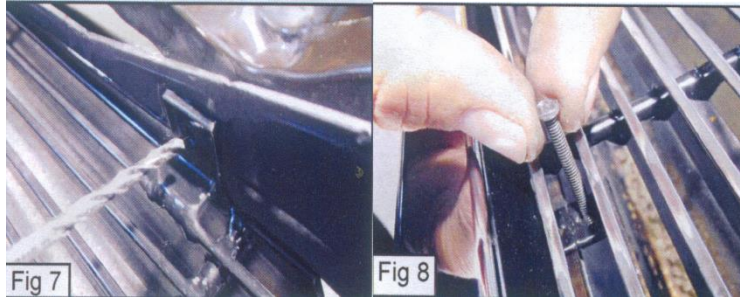
With a Die Grinder, Remove the Vertical and Horizontal Plastic Bars that are around the Grille. (Fig. 4 & 5)Center billet grille in backside of grille shell.Place the Grille into the Grille Opening. (Fig. 6)

3			
---	--	--	--

The instruction here is for your reference only. You may need to bend the billet grille bars or tabs a little bit to adjust to fit. We strongly recommend the professional installer for best result. Please use masking tape and tape the OEM grille shell along the edge to protect your vehicle during installation. We are not responsible for any damage caused by the installation. Thank you for choosing our product!

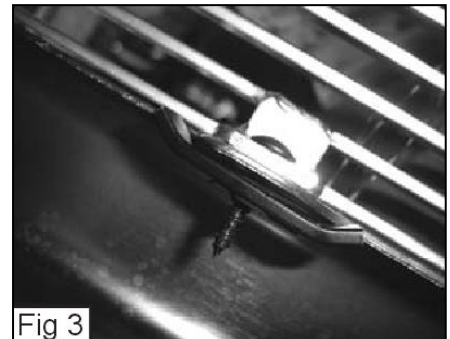
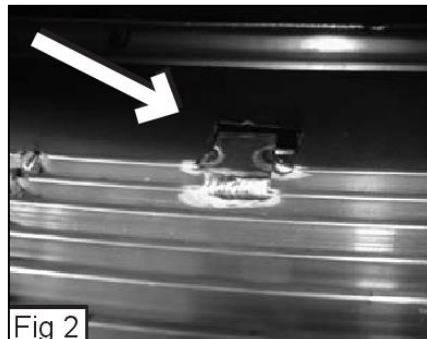
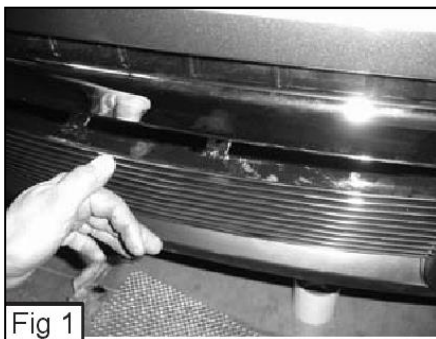
Part#	GR06HFF14S	Application	For 2009-2014 Ford F-150 Not For Harley Davidson And Raptor
--------------	------------	--------------------	---

4 With the 3/16 Drill, drill through the Brackets and place the #10 Screws through them Threading with a Flat nut. (Fig. 7) Place the M-Screws through the two inner Brackets that are on the Grille, the Flange Brackets and Thread with Nylon Lock Nuts. (Fig. 8)



5 Move on to the bumper piece. Remove the factory license plate holder. Next insert the billet grille into the bumper opening. Make sure the side of the billet grille with the two small metal tabs that extend down and away from the grille are on the bottom. (Fig 1) The two tabs will slide into a slot in the plastic on the bottom edge of the bumper opening. (Fig 2)

6 On the bottom edge of the factory bumper are two metal tabs with holes. With the billet grille inserted into the bumper opening take two #8 screws and put them up through the billet grille tabs and the tabs with holes on the bottom edge of the factory bumper. Use a U-Clip nut secured on the flange bracket on the top side of the bumper tabs and tighten with a phillips screwdriver. (Fig 3)



7 Make sure the billet grille is centered and tighten the fasteners. Installation completed.

The instruction here is for your reference only. You may need to bend the billet grille bars or tabs a little bit to adjust to fit. We strongly recommend the professional installer for best result. Please use masking tape and tape the OEM grille shell along the edge to protect your vehicle during installation. We are not responsible for any damage caused by the installation. Thank you for choosing our product!