





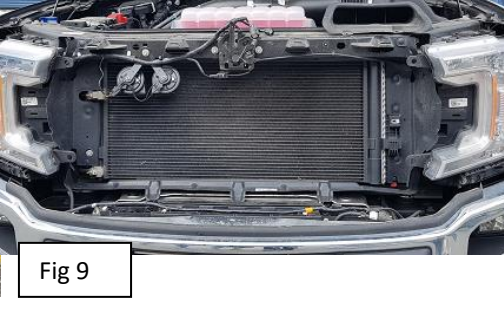

Part#	GR06HFD00T/U	Application	<b>For 2018-2019 Ford F-150 Without Front Camera Main Upper</b>					
-------	--------------	-------------	---	--	--	--	--	--

Parts List	Item	Part Name	QTY	Description	Item	Part Name	QTY	Description
	1	Billet Grille	1	Aluminum	4	Keq Nut	3	10#
	2	U-Clip Nut	5	M6	5	Flat Washer	5	16 * 6.5 * 1
	3	Fender Washer	3	25 * 5 * 1	6	Bolt	5	M6 * 30

Install Notes: Overlay  Replacement  Drill  Cut

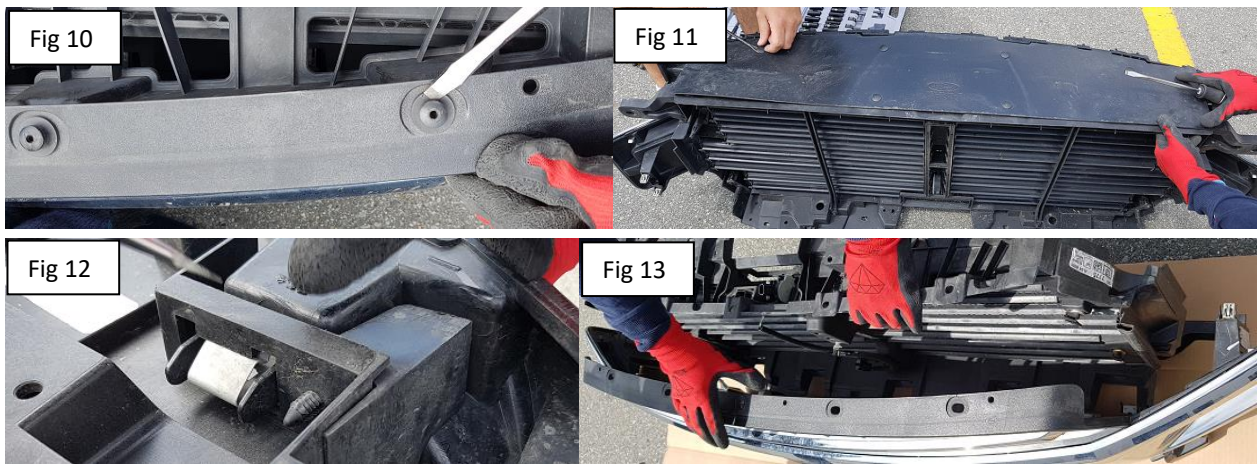
Step	Description	Illustration
1	Identify the grille & hardware with parts list.	
2	Turn off engine and chalk tires with stop block. Identify and locate plastic clips on top of plastic shroud. Carefully pry off to remove and then set aside for reinstallation later. (Fig 1) Remove plastic shroud and then set aside for reinstallation later. (Fig 2)	 
3	Unplug the two plugs for the sensor and remove the clip that fix the wiring. (Fig 3) On top of the OEM grille where you remove the plastic cover, remove the 4 bolts with washers that secure the OEM grille on the car body. (Fig 4)	 

The instruction here is for your reference only. You may need to bend the billet grille bars or tabs a little bit to adjust to fit. We strongly recommend the professional installer for best result. Please use masking tape and tape the OEM grille shell along the edge to protect your vehicle during installation. We are not responsible for any damage caused by the installation. Thank you for choosing our product!

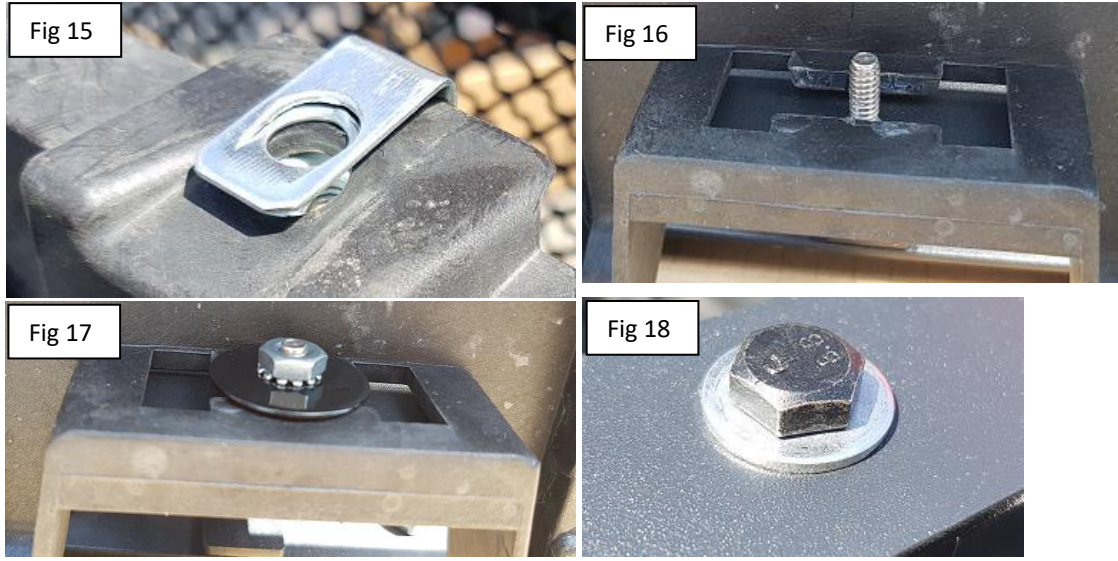
Part#	GR06HFD00T/U	Application	For 2018-2019 Ford F-150 Without Front Camera Main Upper
4	<p>To remove the bumper lip, remove the bolts under the fender (two each side). If you have fender flares installed, remove them so you will see the bolts. Pull out the lip. (Fig 5&amp;6)</p>		 <p>Fig 5</p>  <p>Fig 6</p>
5	<p>Under the headlight, remove the bolt that is attaching the OEM grille to the truck body. (Fig 7) Slightly lift up and pull forward the OEM grille to remove from truck. (Fig 8&amp;9)</p>  <p>Fig 7</p>  <p>Fig 8</p>  <p>Fig 9</p>		
6	<p>Remove the plastic clips on top of the OEM grille. (Fig 10) Remove the black plastic cover on the bottom of the OEM grille by prying up the plastic clips. (Fig 11) There are 4 metal clips near the bottom of the OEM factory grille shell. Use your screwdriver and push slightly to release it. (Fig 12) Remove the bolt that is holding the emblem on the shell. (Fig 14) The OEM factory grille should now be free and ready to be removed. (Fig 13)</p>		 <p>Fig 14</p>

The instruction here is for your reference only. You may need to bend the billet grille bars or tabs a little bit to adjust to fit. We strongly recommend the professional installer for best result. Please use masking tape and tape the OEM grille shell along the edge to protect your vehicle during installation. We are not responsible for any damage caused by the installation. Thank you for choosing our product!

Part#	GR06HFD00T/U	Application	<b>For 2018-2019 Ford F-150 Without Front Camera Main Upper</b>
-------	--------------	-------------	---



On top of the OEM grille shell, insert a U-clip nut on each of the 5 locations(Fig 15). Place and align the grille on top of the OEM grille shell. Make sure the studs on the bottom of the grille go through the holes at bottom of the OEM grille shell(Fig 16). Then, thread in a fender washer and secure with Kep nut, for all three locations at bottom(Fig 17). For the top, thread in a flat washer and secure with M6 bolt for each of the 5 locations(Fig 18).



Put the grille back to the truck. Plug in the sensor plugs and fix wiring with clip. Re-install the fender lip and black plastic cover using the stock screws and clips. At this point you want to look over your work and examine the gap alignments around all edges and in between the new grille and the vehicle components and body lines. Carefully close the hood for a complete visual inspection. If adjustment is needed, you can loosen the top mounts and shift side to side even gaps.

Installation completed.

The instruction here is for your reference only. You may need to bend the billet grille bars or tabs a little bit to adjust to fit. We strongly recommend the professional installer for best result. Please use masking tape and tape the OEM grille shell along the edge to protect your vehicle during installation. We are not responsible for any damage caused by the installation. Thank you for choosing our product!