

Part#	GR06HEC43A/H	Application	For 2006-2012 Ford Ranger Not For STX
-------	--------------	-------------	---------------------------------------

Parts List	Item	Part Name	QTY	Description	Item	Part Name	QTY	Description
	1	Billet Grille	1	Aluminum	5	Screws	2	8×1"
	2	U-Nuts	2	8#	6	Bolts	2	1/4-20X3/4"
	3	Nuts	2	1/4-20	7	Tabs	2	
	4	'Z' Brackets	2		8	Lock Washers	2	1/4"

Install Notes: Overlay Replacement Drill Cut

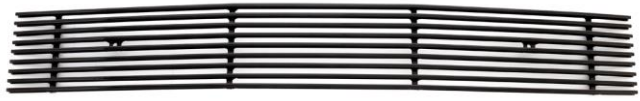
Step	Description	illustration
1	Identify the grille & hardware with parts list.	
2	Tow hooks must be removed (Fig 1).	
3	Test fit the billet into the bumper opening. Slide the u-nut onto the Z brackets (the end with the small hole). Attach the other end to the factory holes in the bumper / core support. The holes are a little larger than the bolts provided. Use the tabs on the back side; this will keep the bolts from sliding through the hole(Fig 2).	
4	Center the grille into the opening. The brackets should align to the tabs welded to the back of the billet. If not, bend the brackets so they align properly. They are made of aluminum and will bend by hand or pliers.	
5	Use the screws with the small head to secure the billet. Adjust the brackets to achieve the proper adjustment if needed(Fig 2).	
6	If your vehicle after 2007, you might need to cut inside edge of the black plastic bumper to fit the grille properly (Fig 3).	



Fig 1

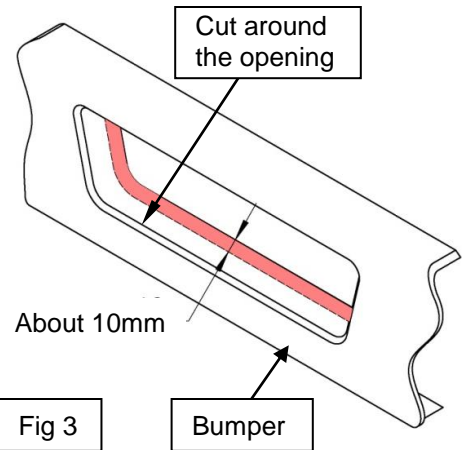


Fig 3

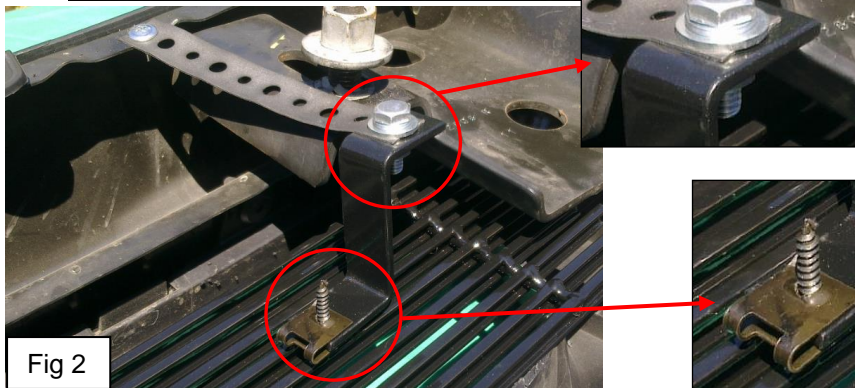
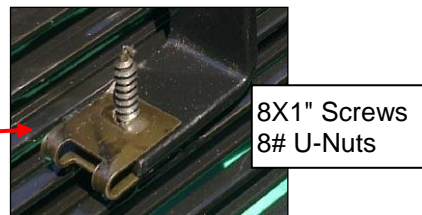


Fig 2


 8X1" Screws
8# U-Nuts

7	Installation completed!!!
---	---------------------------

The instruction here is for your reference only. You may need to bend the billet grille bars or tabs a little bit to adjust to fit. We strongly recommend the professional installer for best result. Please use masking tape and tape the OEM grille shell along the edge to protect your vehicle during installation. We are not responsible for any damage caused by the installation. Thank you for choosing our product!