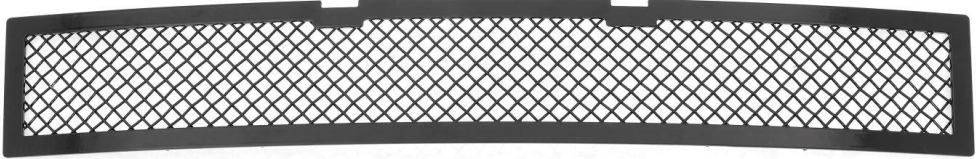


<b>Part#</b>	F75190T&H	<b>Application</b>	For 2019-UP Ford Ranger Without Adaptive Cruise Control
--------------	-----------	--------------------	---

	Item	Part Name	QTY	Description	Item	Part Name	QTY	Description
<b>Parts List</b>	#1	Mesh Grille	1	Stainless Steel	#3	Flat Tabs-1	2	
	#2	Nylon Lock Nuts	6		#4	Flat Tabs-2	2	

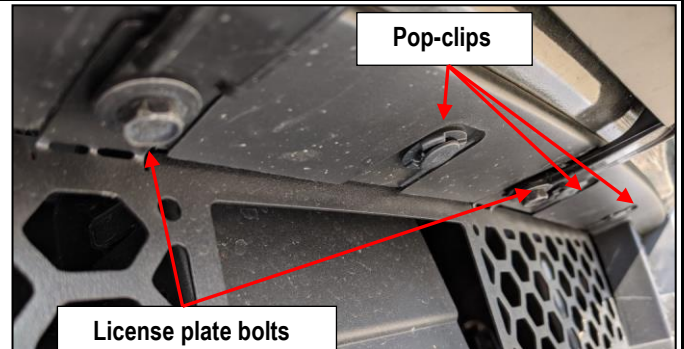
**Install Notes:** Overlay  Replacement  Drill  Cut

Step	Description	illustration
1	Identify the grille & hardware with parts list.	

2 Remove and keep the five 10mm bolts that hold on the lower bumper valance. **(Fig 1)**



**(Fig 1) Five Lower Valance Bolts**



**License plate bolts**

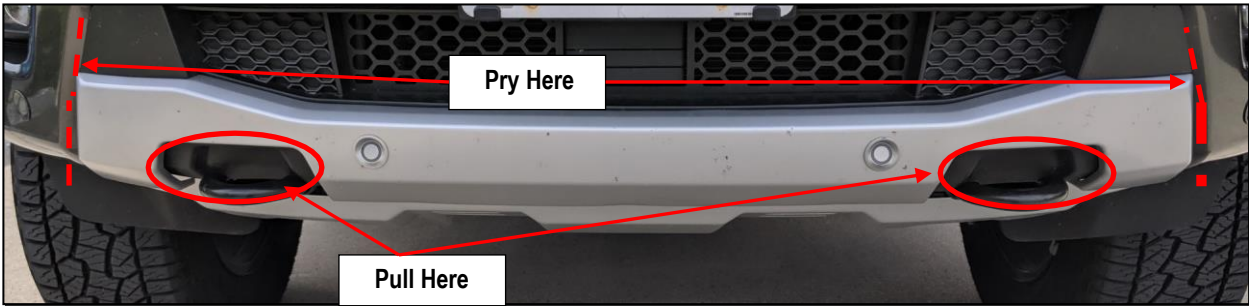
**Pop-clips**

**(Fig 2) License Plate Bolts And Pop-Clips**

3	Remove and keep the two 10mm bolts that hold on the license plate bracket shown in <b>Fig 2</b> . These screws can be differentiated from the valance screws because they are slightly longer.
4	Using the flathead screwdriver, remove and keep the 5 pop-clips from the upper bumper valance seen in <b>Fig 2</b> .
5	To remove the lower bumper valance, begin by using the plastic trim removal tool to pry out the edge of the valance cover. Once the valance pops out slightly, grab where indicated in <b>Fig 3</b> . And pull outwards. This may require a decent amount of force.
6	Unplug the two parking sensors from their harness. It is recommended at this point to remove any metal clips that were left behind in the metal part of the bumper and install them onto the plastic bumper valance when it is off the vehicle. This will aid in ease of installation later

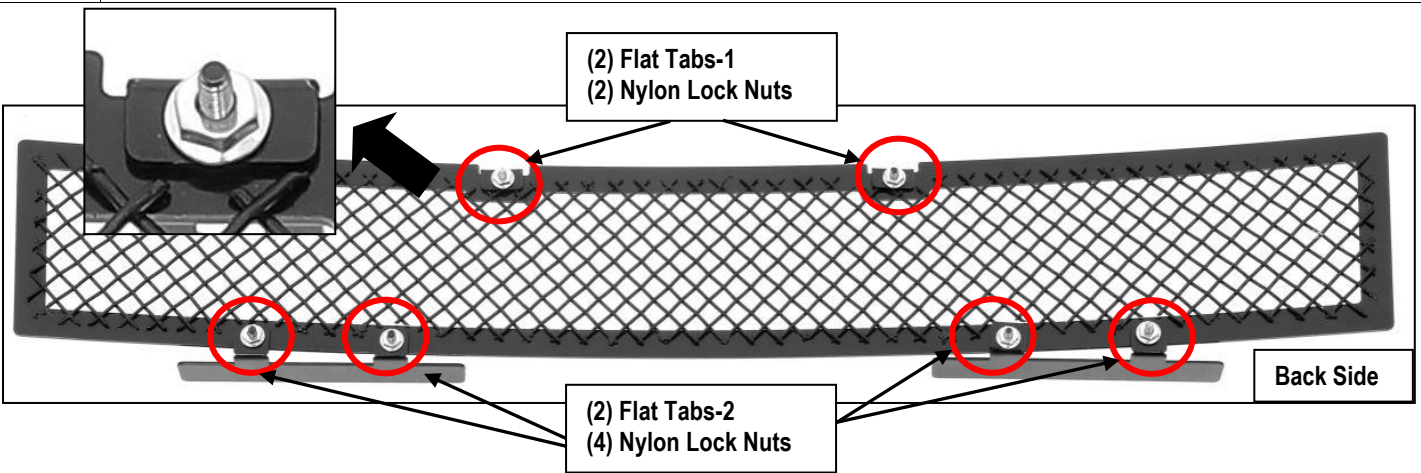
The instruction here is for your reference only. We strongly recommend the professional installer for best result. We are not responsible for any damage caused by the installation. Thank you for choosing our product!

<b>Part#</b>	F75190T&H	<b>Application</b>	For 2019-UP Ford Ranger Without Adaptive Cruise Control
--------------	-----------	--------------------	---



(Fig 3) Bumper Valance Removal

7 From the rear, place a Flat Tab on each stud. Now thread a Nylon Lock Nut on each stud.



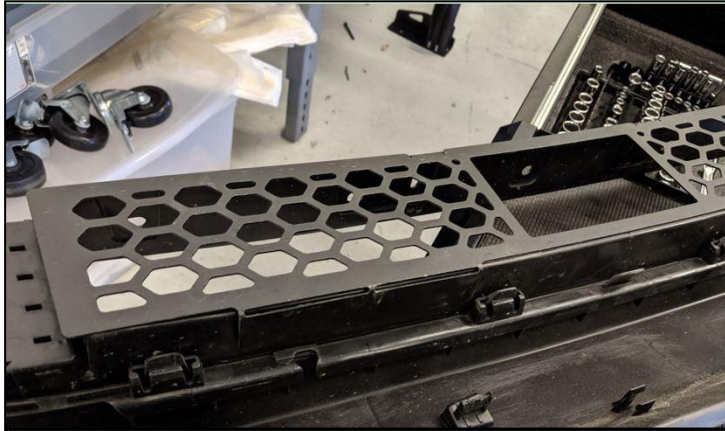
8 Remove the film from the Flat Tabs-2 on the grill insert, to install the grill insert onto the bumper valance. (Fig 5 & 6)  
**Note:** Thoroughly clean any dirt off of the interior of the bumper valance to ensure proper tape adhesion. (Fig 4)



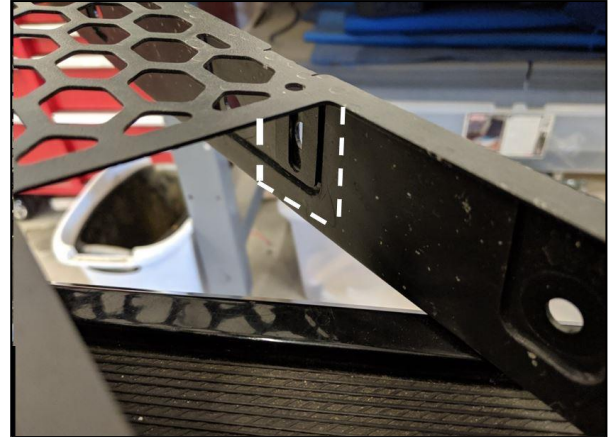
(Fig 4) Bumper Valance Interior

The instruction here is for your reference only. We strongly recommend the professional installer for best result. We are not responsible for any damage caused by the installation. Thank you for choosing our product!

<b>Part#</b>	F75190T&H	<b>Application</b>	For 2019-UP Ford Ranger Without Adaptive Cruise Control
--------------	-----------	--------------------	---



(Fig 5) Set Grille Onto Bumper Valence (Reference only)



(Fig 6) Align Tabs With License Plate Holes (Reference only)

<b>9</b>	Make sure the insert is centered and tighten the hardware.
<b>10</b>	Reinstall the plastic shroud with the fasteners removed in Steps 2-6.
<b>11</b>	Installation completed.

The instruction here is for your reference only. We strongly recommend the professional installer for best result. We are not responsible for any damage caused by the installation. Thank you for choosing our product!