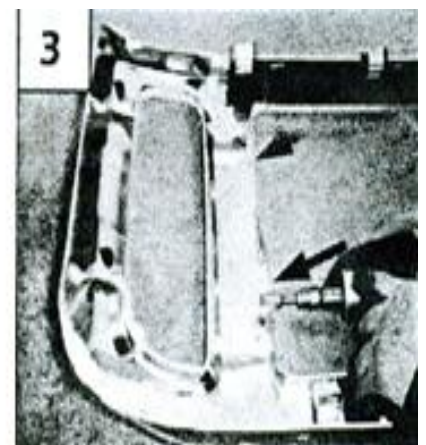
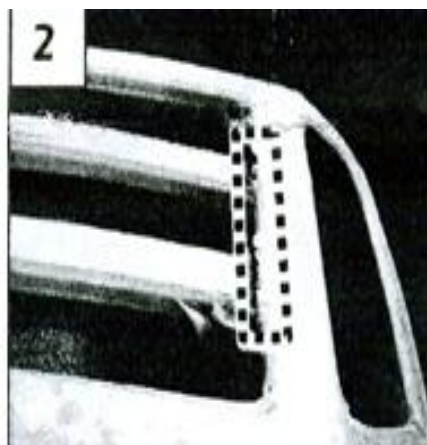


Part#	GR06GEA76T	Application	05-07 Ford Excursion /F-250 /F-350/ F-450 /F-550 Not For Harley Davidson - 3pc				
-------	-------------------	-------------	---	--	--	--	--

Parts List	Item	Part Name	QTY	Description	Item	Part Name	QTY	Description
	1	Mesh Grille	1	Stainless steel	5	J Hooks	4	1.5"
	2	Fender Washer	1	1" × 1/4"	6	Nylon Lock Nuts	10	10-24
	3	Flat Washers	12	10#	7	Studs	12	10-24 × 1 1/2"
	4	Flange Brackets	4	135'				

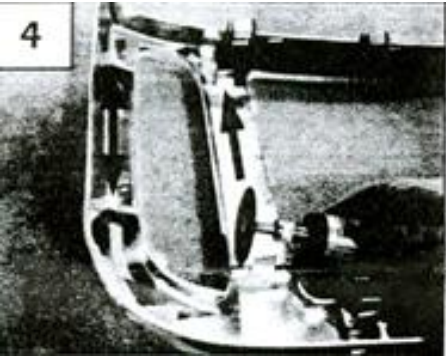
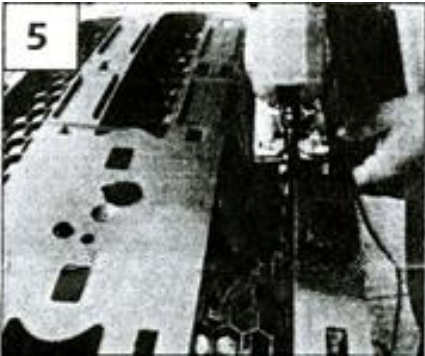
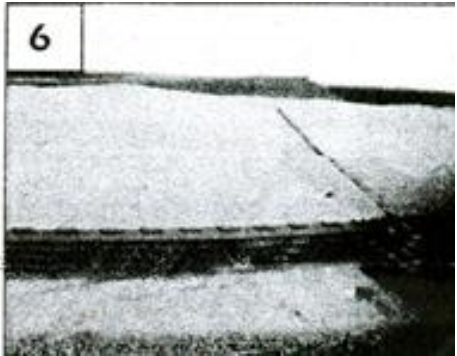

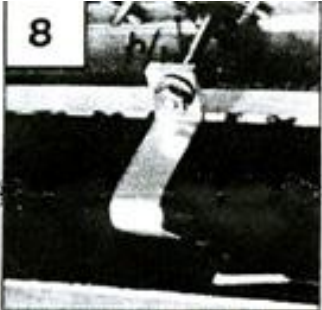

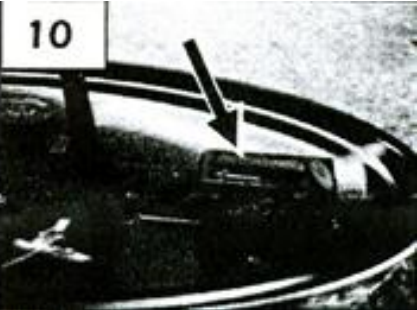
Install Notes: Overlay Replacement Drill Cut

Step	Description	illustration
1	Identify the grille & hardware with parts list.	N/A
2	Remove the screws on top of the grille. Now depress the clips on the bottom and remove the grille from the vehicle. Access the lower clips by gently pulling the grille forward; then use a large slotted screwdriver to depress the clips. Remove the grille from the vehicle. Apply masking tape to the face of the grille.	
3	Remove the factory mesh insert behind the chrome shell (1); use a slotted screwdriver to depress molded clips securing the insert. Do not damage the plastic mounting tabs along the bottom. Remove the single 10mm nut securing the Ford logo in place. Depress the two molded clips retaining the logo; remove the logo. Use a jig-saw or die grinder to cut the center crossbars from chrome grille (2). Make your cut approximately 1/8" -1/4" inside each end of the center opening.	
4	Test fit the center grille; trim an additional 1/4" off the plastic edge near the mounting studs (3). The outer frame overlaps the edge to hide your cuts (do not cut beyond the mesh grille frame).	



5	Trim four mounting tabs on each end of the grille (4); do not cut into the face of the grille.
---	--

The instruction here is for your reference only. You may need to bend the grille a little bit to adjust to fit. We strongly recommend the professional installer for best result. We are not responsible for any damage caused by the installation. Thank you for choosing our product!

Part#	GR06GEA76T	Application	05-07 Ford Excursion /F-250 /F-350/ F-450 /F-550 Not For Harley Davidson - 3pc
6	<p>The lower section on the factory mesh insert is re-used. This portion contains the metal clips to secure the grille to core support. Use a jig-saw or die grinder to cut these sections from the insert (5&6); Make your cuts at the base of the honeycomb (where it meets the solid plastic portion). Re-install.</p>		
<div style="display: flex; justify-content: space-around;"> <div style="text-align: center;">  <p>4</p> </div> <div style="text-align: center;">  <p>5</p> </div> <div style="text-align: center;">  <p>6</p> </div> </div>			
7	<p>Position the center mesh grille in front of the grille opening. Thread a stud in each nut welded to the grille. Install the 135' flange brackets along the top (7); Install the J hook brackets along the bottom (8). Use the washers and nuts to secure each stud.</p>		
8	<p>The side inserts attach to the mounting studs on each end of the grille (9). Test fit the inserts; if necessary, bend the brackets for optimum fit. Use the nuts and washers to secure the inserts.</p>		
9	<p>Optional; the Ford logo and mounting plate can be removed if desired. For installation, trim the thin area on the two mounting tabs; leave 1/16" (10) material to center the logo onto the plate. Loosen the mounting plate hardware; center the logo upright. From back, install provided fender washer, then OE retaining nut.</p>		
<div style="display: flex; justify-content: space-around;"> <div style="text-align: center;">  <p>7</p> </div> <div style="text-align: center;">  <p>8</p> </div> <div style="text-align: center;">  <p>9</p> </div> <div style="text-align: center;">  <p>10</p> </div> </div>			
10	<p>Make sure the billet grille is centered and tighten the fasteners.</p>		
11	<p>Installation completed!!!</p>		

The instruction here is for your reference only. You may need to bend the grille a little bit to adjust to fit. We strongly recommend the professional installer for best result. We are not responsible for any damage caused by the installation. Thank you for choosing our product!