
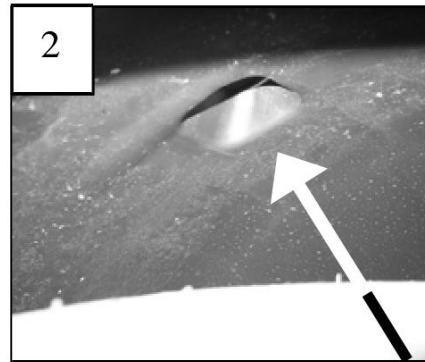
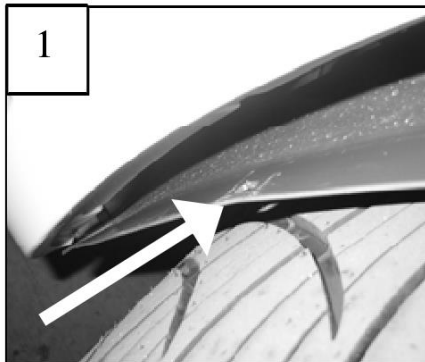


Part#	GR04HEC20A/H	Application	<b>For 2005-2010 Dodge Charger 1 PC Cover All</b>				
-------	--------------	-------------	---	--	--	--	--

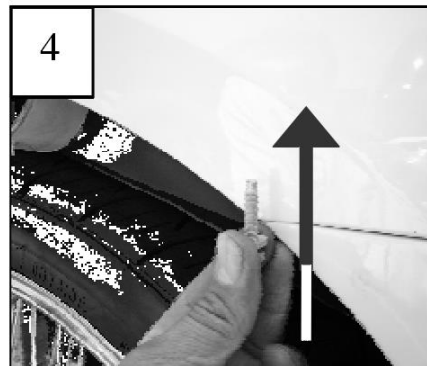
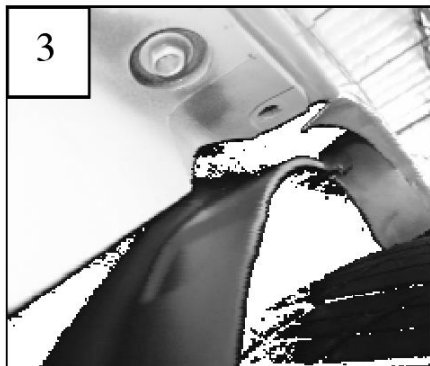
Parts List	Item	Part Name	QTY	Description	Item	Part Name	QTY	Description
	1	Billet Grille	1	Aluminum	3	Truss Head Tapping Screws	6	8-32×3/4"
	2	Flat Nuts	6	8#	4	Plastic Body Retainers	6	

Install Notes: Overlay  Replacement  Drill  Cut

Step	Description	illustration
1	Identify the grille & hardware with parts list.	
2	Open the hood. Use a screwdriver to remove the eight push in fasteners along the top of the bumper cover. Next, remove the two-piece plastic cover assembly behind the four fasteners. Each cover has metal press-in clips securing them in place. Pull up on the covers to remove them. Remove the ten 7mm bolts that hold the engine splash shield to the bumper cover along the bottom.	
3	Remove the three plastic rivets securing the bumper cover to splash shields just below the fender line in each wheel well; 6 total (1). Use a small hammer and punch to remove the center from each plastic rivet. These rivets will be replaced with new hardware. Now remove the single remaining plastic fasteners in each wheel well. This is a re-usable fastener located in a recessed hole (2).	



Each end of the bumper cover is secured to the fenders with a 10mm bolt. Pull the wheel well splash shields back and remove the vertical bolt in each corner. (3 & 4).



The instruction here is for your reference only. You may need to bend the billet grille bars or tabs a little bit to adjust to fit. We strongly recommend the professional installer for best result.

Please use masking tape and tape the OEM grille shell along the edge to protect your vehicle during installation.

We are not responsible for any damage caused by the installation. Thank you for choosing our product!

Part#	GR04HEC20A/H	Application	For 2005-2010 Dodge Charger 1 PC Cover All
4	Behind each signal light is a 10mm nut attached to a stud (5). Access this nut from the wheel well with an extension and socket. The last retaining bolt is in the top corner of each fender. This bolt is shown next to the outer push in fastener (6 & 7).		
<div style="display: flex; justify-content: space-around;"> <div data-bbox="418 394 824 898"> </div> <div data-bbox="846 394 1156 636"> </div> <div data-bbox="846 653 1156 898"> </div> </div>			
<p>Once these are removed, gently pull the bumper cover forward until the signal lights pop out. Disconnect the signal light wiring. Continue removing the bumper cover and disconnect the wiring to the driving lights. Remove the grille by removing the four Phillips screws holding it in place. Lighter color vehicles (silver cream etc) will require a coat of black paint to the opening of the grille. Mask about 1-2" behind the opening. Lightly scuff the paint and apply a coat of black paint.</p>			
5	Center the billet into the opening. Align the brackets to the lip in back of the bumper cover. It may be necessary to slightly bend the brackets so they align properly. Once the grille is centered, drill a 1/8" hole at each bracket. Use the #8 screws and flat nuts to secure the billet in place (8 & 9).		
<div style="display: flex; justify-content: space-around;"> <div data-bbox="256 1192 743 1556"> </div> <div data-bbox="867 1192 1354 1556"> </div> </div>			
6	Connect the driving lights. Re-install the assembled bumper cover assembly back onto the vehicle. Make sure the signal light wires are in the bumper cover light holes. Carefully align the fender to bumper cover studs. Gently push the bumper cover in place. The three rivets from each wheel well splash shield are to be replaced with the plastic push-in retainers supplied in the hardware pack. Re-install the signal lights.		
7	Make sure the billet grille is centered and tighten the fasteners.		
8	Installation completed!!!	N/A	

The instruction here is for your reference only. You may need to bend the billet grille bars or tabs a little bit to adjust to fit. We strongly recommend the professional installer for best result. Please use masking tape and tape the OEM grille shell along the edge to protect your vehicle during installation. We are not responsible for any damage caused by the installation. Thank you for choosing our product!