



Grille Installation Instruction

Rev. 141001

| | | | | | | | | |
|-------|------------|-------------|---|--|--|--|--|--|
| Part# | GR04GEA61T | Application | 08~10 Dodge Magnum (4 PCS) (Except SRT8) | | | | | |
|-------|------------|-------------|---|--|--|--|--|--|

| Parts List | Item | Part Name | QTY | Description | Item | Part Name | QTY | Description |
|------------|--------|-------------|-----|-----------------|------|-----------|-----|-------------|
| | 1 | Mesh Grille | 4 | Stainless steel | 3 | Screws | 16 | #8×3/4" |
| 2 | U-Nuts | 16 | | | | | | |

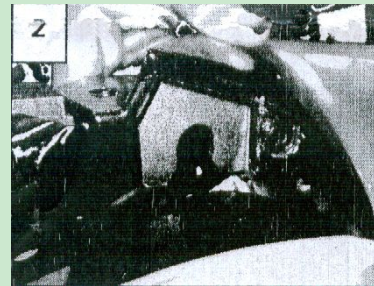
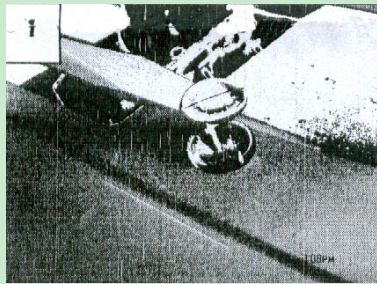
Install Notes: Overlay Replacement Drill Cut

| Step | Description | illustration |
|------|-------------|--------------|
|------|-------------|--------------|

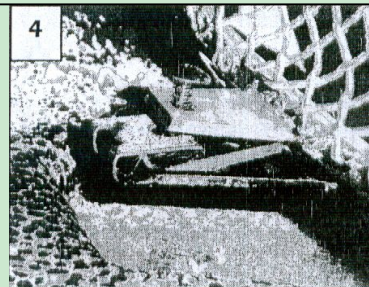
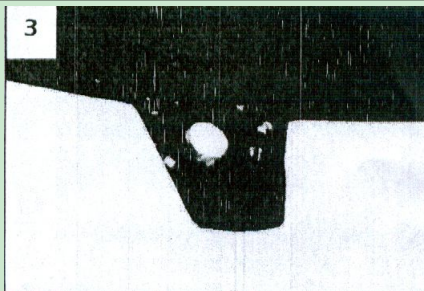
| | | |
|---|---|-----|
| 1 | Identify the grille & hardware with parts list. | N/A |
|---|---|-----|

| | | |
|---|---|--|
| 2 | Pop hood, remove the black plastic cover (on top of OEM grille / front panel) from vehicle. This will allow access to the rear of the grille shell. | |
|---|---|--|

| | | |
|---|--|--|
| 3 | <i>Remove the two-piece plastic cover in front of the radiator support. Remove the clips holding the grille shell in place. Pull up to remove them (1). In each corner is a molded flap that secures the grille shell to the fenders. Pull up and separate the grille shell from the fender (2). This will allow access to the rear of the grille shell.</i> | |
|---|--|--|



| | | |
|---|---|--|
| 4 | Remove the factory grille inserts. Depress the clips to remove the inserts. Pull the inserts out of the bumper opening. There are 16 tabs that hold the factory inserts in place. Using the drill; locate the center of each tab and drill a hole. (If you purchased the lower bumper grille; install now) The mesh inserts can now be installed into the bumper cover. There are driver and passenger sides. Each side has the upper and lower piece. Center the grilles into the bumper opening from the front side of grille. The inserts will only fit one way. The mounting tabs align to the factory locations. (Do not over tighten). Place a U-Nut on each tab. Using the phillips head screws, place these into each mount and tighten (4). | |
|---|---|--|



| | | |
|---|---|--|
| 5 | Make sure the grille is centered and tighten the fasteners. | |
|---|---|--|

| | | |
|---|--|--|
| 6 | Reinstall the plastic shroud with the fasteners removed in Step 2-3. | |
|---|--|--|

| | | |
|---|---------------------------|--|
| 7 | Installation completed!!! | |
|---|---------------------------|--|

The instruction here is for your reference only. You may need to bend the billet grille bars or tabs a little bit to adjust to fit. We strongly recommend the professional installer for best result. Please use masking tape and tape the OEM grille shell along the edge to protect your vehicle during installation. We are not responsible for any damage caused by the installation. Thank you for choosing our product!