

Part#	GR04GAA99T	2011-2014 Dodge Charger (Not For SRT Model And Adaptive Speed Control(NHP) Package)
-------	------------	---

Parts List	Item	Part Name	QTY	Description	Item	Part Name	QTY	Description
	1	Mesh Grille	2	Stainless steel	5	Lock Nut	14	6-32
	2	Stud	4	6-32×3"	6	Flat Washer	4	Φ25×Φ5×1
	3	Stud	4	6-32×1"	7	Flange Bracket	4	
	4	Flat Tabs	6		8	Screws	6	6-32×1"

Install Notes: Overlay Replacement Drill Cut

Installation

Step 1 Identify the grille insert & hardware with parts list

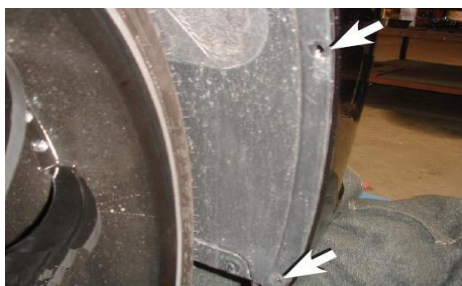


Step2-1: Pop hood, Remove 2 Plastic Covers above the Factory Grille Shell.



Step2-1: Remove 4 Clips along the Factory Grille Shell.

Step 2:
Factory Grille Shell Removal



Step2-3: Remove 2 Clips along the Fender.



Step2-4: Use a Plastic Prybar to separate the Fender Cover from Bumper Shell and remove 10mm Bolt.



Step2-5:On each end,Clips secure the side bumper,Carefully pull the side bumper outward to release clips.



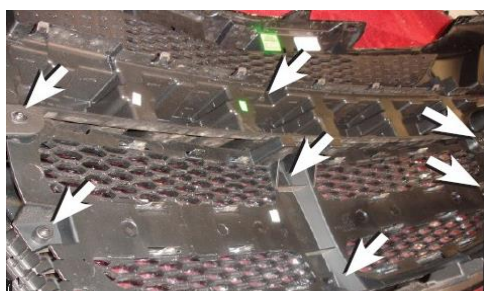
Step2-6:Remove 6 Bolts along the bottom of the Bumper Shell.

The instruction here is for your reference only. You may need to bend the grille a little bit to adjust to fit. We strongly recommend the professional installer for best result. We are not responsible for any damage caused by the installation. Thank you for choosing our product!

Part#	GR04GAA99T	2011-2014 Dodge Charger (Not For SRT Model And Adaptive Speed Control(NHP) Package)
-------	------------	---



Step2-7:Remove factory grille and bumper (grille and bumper are connected together)



Step3-1: Remove 6 Screws from around the Factory Grille and 1 Screw on the Bumper Support.



Step3-2:Remove Bumper Support.

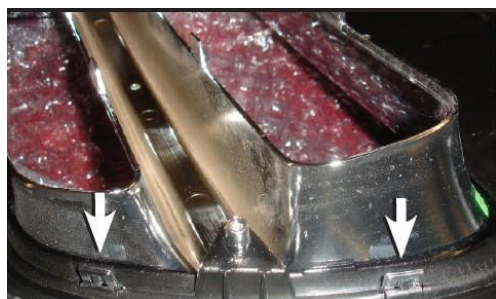
Step 3: Grille Removal



Step3-3:Unclip 16 clips from around the Factory Grille.



Step3-4: Remove Factory Grille.

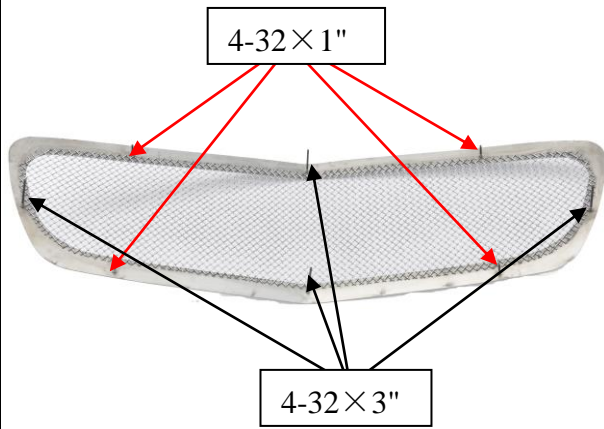
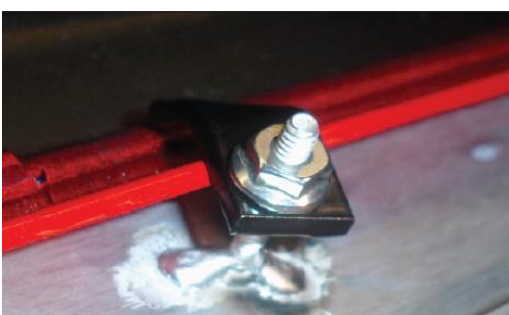




Step3-5:Unclip 8 Clips from around the OEM Grille Shell and remove (OEM Grille Shell will come out from front).


Step3-6: Unclip the Dodge Logo on the Factory Grille.

The instruction here is for your reference only. You may need to bend the grille a little bit to adjust to fit. We strongly recommend the professional installer for best result. We are not responsible for any damage caused by the installation. Thank you for choosing our product!

Part#	GR04GAA99T	2011-2014 Dodge Charger (Not For SRT Model And Adaptive Speed Control(NHP) Package)
-------	------------	---

Step 4: Grille Installation	 <p><u>Step4-1: Secure the stud to the threaded holes on the rear of the grille.</u></p>	<p><u>Step4-2: Center the grille into the opening of the factory grille shell, Be sure the studs are through the OEM grille shell.</u></p>
	 <p><u>Step4-3: On the 4 short studs on the Grille Shell, Insert Flange Brackets to so it latches onto the Factory Grille Shell and thread a Lock Nut in Place.</u></p>	 <p><u>Step4-4: Place back the Factory Grille over the Grille Shell.</u></p>
 <p><u>Step4-5: Place 4 Flat washers Around the Threaded Screws on the Grille Shell and thread Lock Nuts in Place.</u></p>	<p><u>Step4-6: Place back the Bumper Filler and re-install the 3 Screws along the bottom of the Factory Grille.</u></p>	
<p><u>Step4-7: Re-Assemble Bumper Support, Clips and bolts.</u></p>		

The instruction here is for your reference only. You may need to bend the grille a little bit to adjust to fit. We strongly recommend the professional installer for best result. We are not responsible for any damage caused by the installation. Thank you for choosing our product!

Part#	GR04GAA99T	2011-2014 Dodge Charger (Not For SRT Model And Adaptive Speed Control(NHP) Package)
Step 5: Bumper Grille Installation	Move on to the bumper grille. Thread a screw in each nut welded to the grille. From the rear, place a tab on each screw. Now thread a nut on each screw.	
	Center the grille into the opening of the factory grille shell. Secure the bolt to the threaded holes on the front of the grille. Be sure the bolts are through the OEM grille shell.	
	Secure grille using the k-lock nuts from the back side of the OEM grille shell.	
	Make sure the billet grille is centered and tighten the fasteners, but do not over-tighten.	
Installation completed!!		

The instruction here is for your reference only. You may need to bend the grille a little bit to adjust to fit. We strongly recommend the professional installer for best result. We are not responsible for any damage caused by the installation. Thank you for choosing our product!