



PATENT PRODUCT

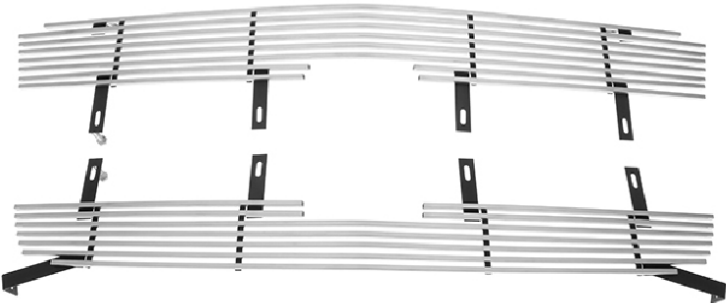
Grille Installation Instruction

Rev. 190501

Part#	C85317C/S/J	Application	For 2002-2006 Chevy Avalanche 1500 Without Body Cladding/2003-2005 Chevy Silverado 1500 /2003-2005 Chevy Silverado 1500 SS /2003-2004 Chevy Silverado 2500 /2003-2004 Chevy Silverado 3500 /2003-2005 Chevy Silverado 1500 HD /2003-2004 Chevy Silverado 2500 HD /2002-2006 Chevy Avalanche 2500 Without Body Cladding
--------------	-------------	--------------------	-------------------------------------------------------------------------------------------------------------------------------------------------------------------------------------------------------------------------------------------------------------------------------------------------------------------------------

	Item	Part Name	QTY	Description	Item	Part Name	QTY	Description
Parts List	1	Billet Grille	2	Stainless steel	3	Truss Head Tapping Screws	6	10×3/4"
	2	U-Clip Nuts	8	10#	4	Truss Socket Tapping Screws	2	10×1"

Install Notes: Overlay Replacement Drill Cut

Step	Description	illustration
1	Identify the grille & hardware with parts list.	
2	Remove four plastic fasteners that hold the filler panel to the grille shell.	
3	Gently pull out ends of grille shell center bar. Pull out four corners of grille shell and remove.	
4	Cut out upper and lower plastic cross hatch in grille shell as shown in picture #1.	
5	Loosely attach upper and lower billet grilles together with #10 truss head tapping screws and U-clip nuts. Center billet grilles in back of grille shell. Tighten screws. Billet grilles should protrude through grille shell cutouts. See picture #2.	
6	Bend upper tabs as necessary to fit. Mark location of mounting slots and drill 1/4" holes. Attach upper tabs to grille shell with #10 truss socket tapping screws and U-clip nuts. See picture #3.	
7	Bend lower mounting tabs as necessary to fit snugly against grille shell lower mounts. Mark position of mounting holes and drill 1/4" holes. Fasten with #10 truss head tapping screws and U-clip nuts. See picture #4.	
8	Make sure the billet grille is centered and tighten the fasteners.	
9	Reinstall the plastic shroud with the fasteners removed in Step 2.	
10	Installation completed!!!	

The instruction here is for your reference only. You may need to bend the grille a little bit to adjust to fit. We strongly recommend the professional installer for best result. We are not responsible for any damage caused by the installation. Thank you for choosing our product!



PATENT PRODUCT

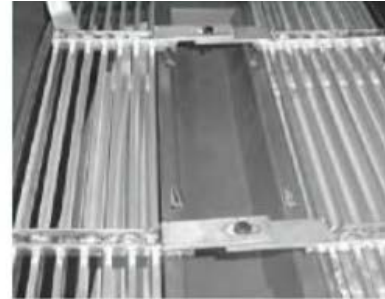
Grille Installation Instruction

Rev. 190501

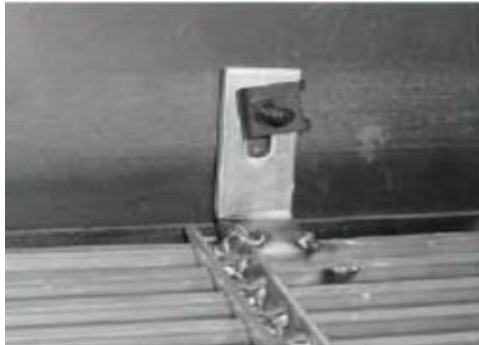
Part#	C85317C/S/J	Application	For 2002-2006 Chevy Avalanche 1500 Without Body Cladding/2003-2005 Chevy Silverado 1500 /2003-2005 Chevy Silverado 1500 SS /2003-2004 Chevy Silverado 2500 /2003-2004 Chevy Silverado 3500 /2003-2005 Chevy Silverado 1500 HD /2003-2004 Chevy Silverado 2500 HD /2002-2006 Chevy Avalanche 2500 Without Body Cladding
-------	-------------	-------------	------------------------------------------------------------------------------------------------------------------------------------------------------------------------------------------------------------------------------------------------------------------------------------------------------------------------



PICTURE 1



PICTURE 2



PICTURE 3



PICTURE 4

The instruction here is for your reference only. You may need to bend the grille a little bit to adjust to fit. We strongly recommend the professional installer for best result. We are not responsible for any damage caused by the installation. Thank you for choosing our product!